



MIAMI

Corporate / Showroom

1945 Hayes St,
Hollywood, FL 33020

(305) 572-0707

info@dayoris.com

LOS ANGELES

Showroom

11817 Major St,
Culver City, CA 90230

(213) 293-8820

california@dayoris.com

dayoris.com





DAYORIS

WORLD



CORE VALUES

DAYORIS is led by a guiding vision that shapes every aspect of our work. We are unwavering in our pursuit of outstanding results, consistently exceeding expectations.

Our primary objective is to ensure that our clients reap the rewards of our dedication and exceptional craftsmanship, all while enjoying a fulfilling experience throughout the design journey.

As a corporation, our core mission is to foster enduring relationships with our employees, vendors, and clients. We do so with integrity and honesty, and we are committed to thriving as productive members of our community.





GOING GREEN

GREEN INITIATIVE

DAYORIS has embraced a forward-thinking approach with our green initiative, which revolves around the strategic reduction of waste, the promotion of efficiency, and an dedicated commitment to environmental sustainability.

Our primary objective is to conduct our operations with the utmost sensitivity to the environment. We achieve this by consistently offering eco-friendly LEED certified products and services whenever they are accessible.

Over time, DAYORIS has solidified its position as a trailblazer in the realm of environmentally responsible offerings, particularly in the development of low-VOC (Volatile Organic Compound) and Formaldehyde-free products.



MANUFACTURING

At DAYORIS, we take immense pride in our position as pioneers in the realm of contemporary door design. Our dedicated team is continually engaged in conducting forward-thinking research to drive the creation of innovative door and frame designs.

In today’s design landscape, the prevailing trend emphasizes clean lines and minimal visual embellishments. DAYORIS has successfully engineered systems that enable us to produce and install oversized doors, which operate as smoothly as standard-sized ones, all while discreetly concealing the essential structural components required for the safe and seamless function.

When visionary architects present us with novel and demanding concepts, DAYORIS eagerly embraces the challenge, taking charge of the design process. We harness cutting-edge drafting software to refine and manipulate the initial idea, followed by meticulous manufacturing, and ultimately, seamless on-site installation.

This well-honed process is a testament to our commitment to pushing the boundaries of contemporary design.

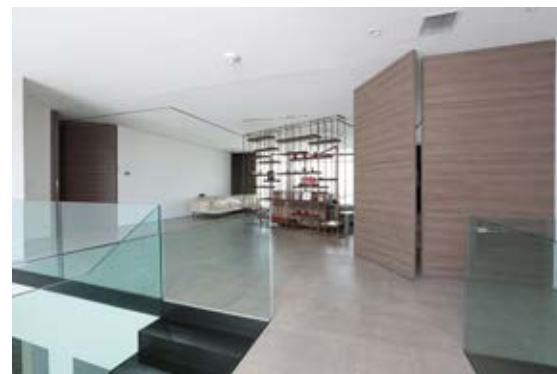








Reach new heights with DAYORIS frameless, floor to ceiling doors. The ultimate in minimalist design, these doors are installed without a traditional “header” and maximize the opening to achieve the greatest open space possible.



“I have always appreciated those who dare to experiment with materials and proportions”
Zaha Hadid



Euro door/ white matte lacquer, vented option



A frameless and invisible door seamlessly integrates with the living space, creating a continuous and uninterrupted linear plane. This design element serves as an excellent backdrop for displaying fine art, custom wall treatments, and designer home decor.





Filo muro/ primed, painted like the wall



Filo muro/ grey matte lacquer, floor to ceiling application



"To create something exceptional your mindset must be relentlessly focused on the smallest detail"
Giorgio Armani



Filo muro/ pivot and swing door, Black stained oak







Filo muro/ white matte lacquer, floor to ceiling application



Telaio/ Stained white oak, design: Shaker 4



Filo muro/ White matte lacquer

Pocket doors add a touch of sophistication and elevate interior design, seamlessly blending a timeless concept that finds application in both residential and commercial settings.



Filo muro/ Nogal Sienna



Custom door with applied stone

"Art is a line around your thoughts"
Gustav Klimt







Swing doors/ custom stained wood veneer



Double doors/ custom stained wood veneer

"Simplicity is the ultimate form of sophistication"
Leonardo Da Vinci



Euro and Euro Bifold doors/ laminated import rovere ljubiana tenue



Euro and Euro Bifold doors/ Custom stained oak





Filo muro/ Black matte lacquer

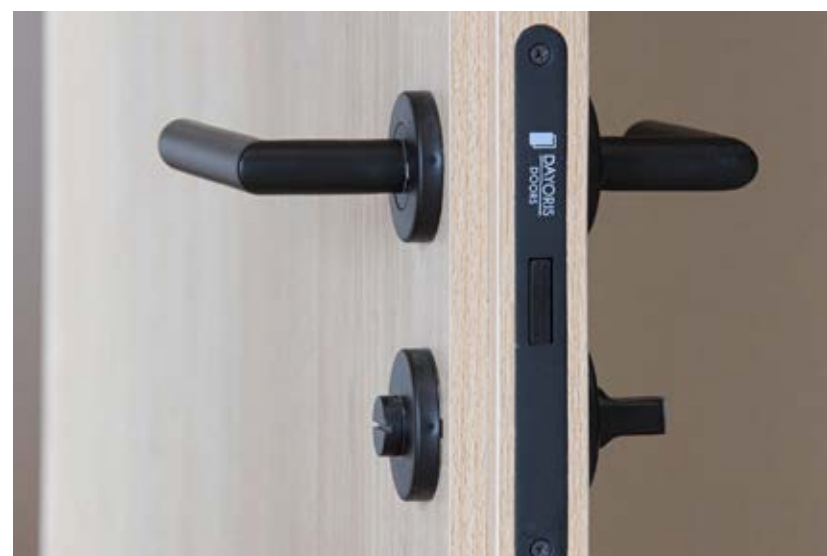


Filo muro/ White matte lacquer floor to ceiling



Filo muro/ primed

Our magnetic lock is compatible with all major European brands (Vali & Vali, Olivari, Colombo, FSB...)





Filo muro/ Quercia



"Trends disappear, style is eternal"
Yves Saint Laurent



“When we build, let us think that we build forever”
John Ruskin





Filo/ Pivot Norey, design: Shaker 1



Filo muro/ white matte lacquer

Sliding doors add a touch of sophistication and elevate interior design, seamlessly blending a timeless concept that finds application in both residential and commercial settings.

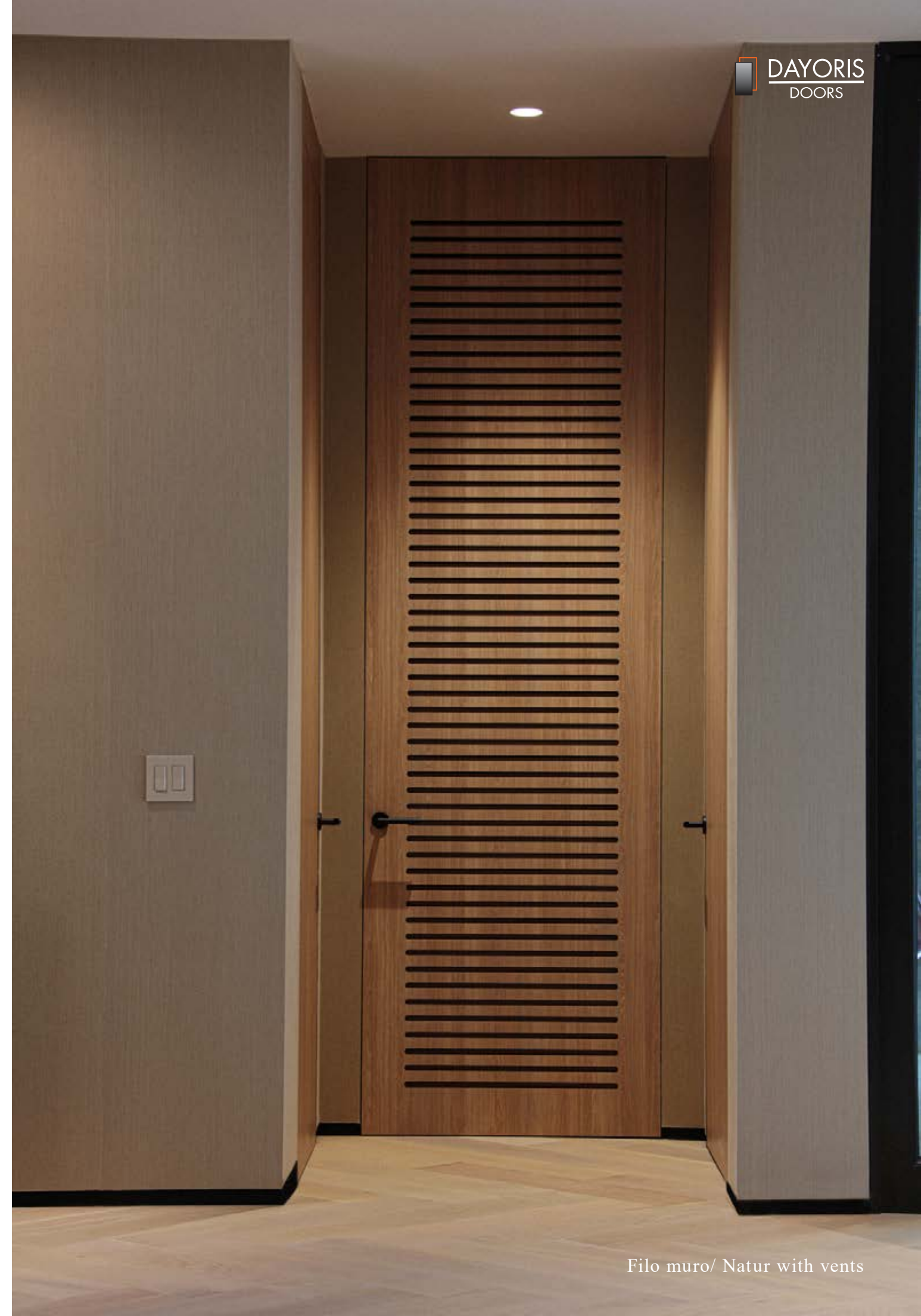




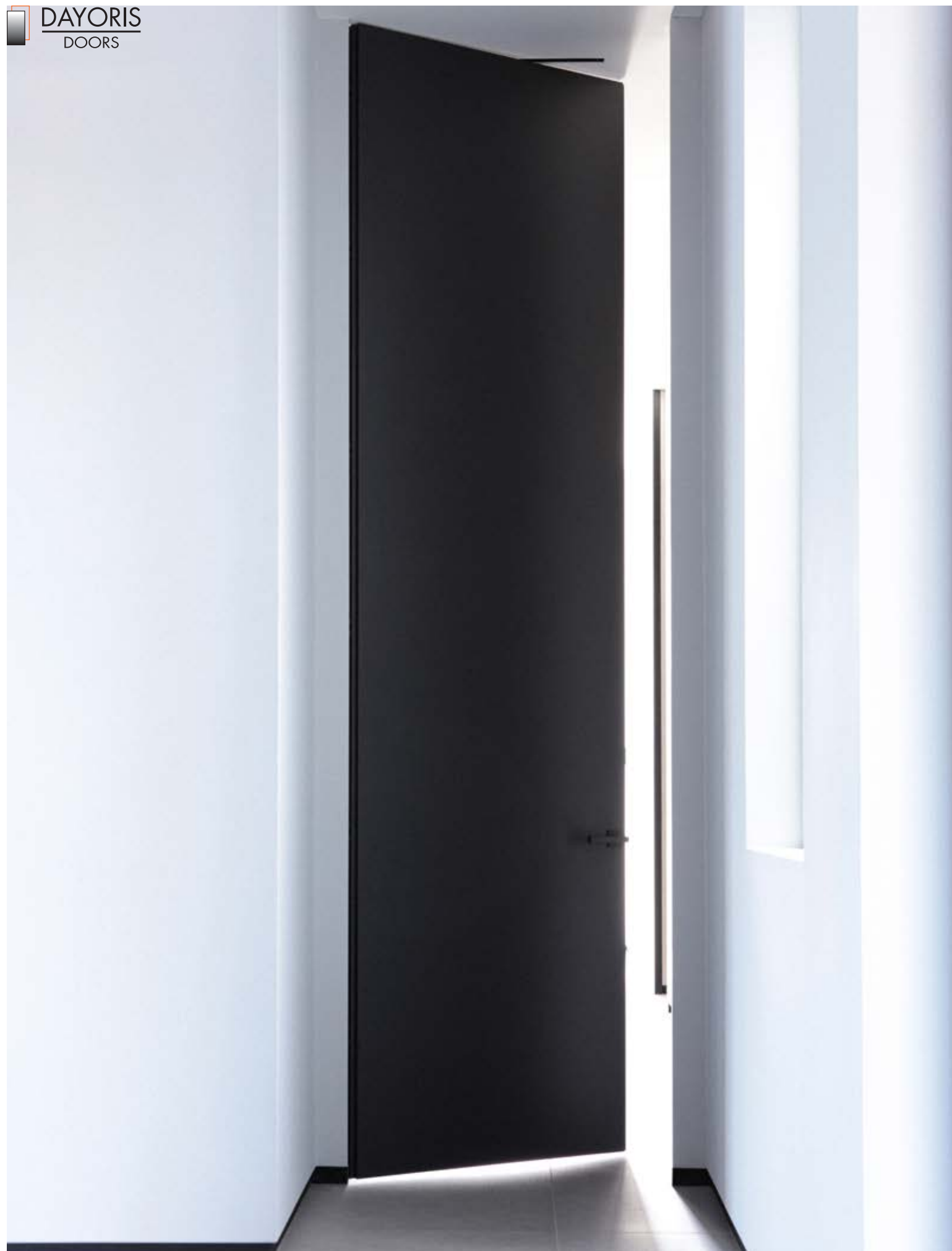
Ombra/ Oversized Pocket door, Wood veneer



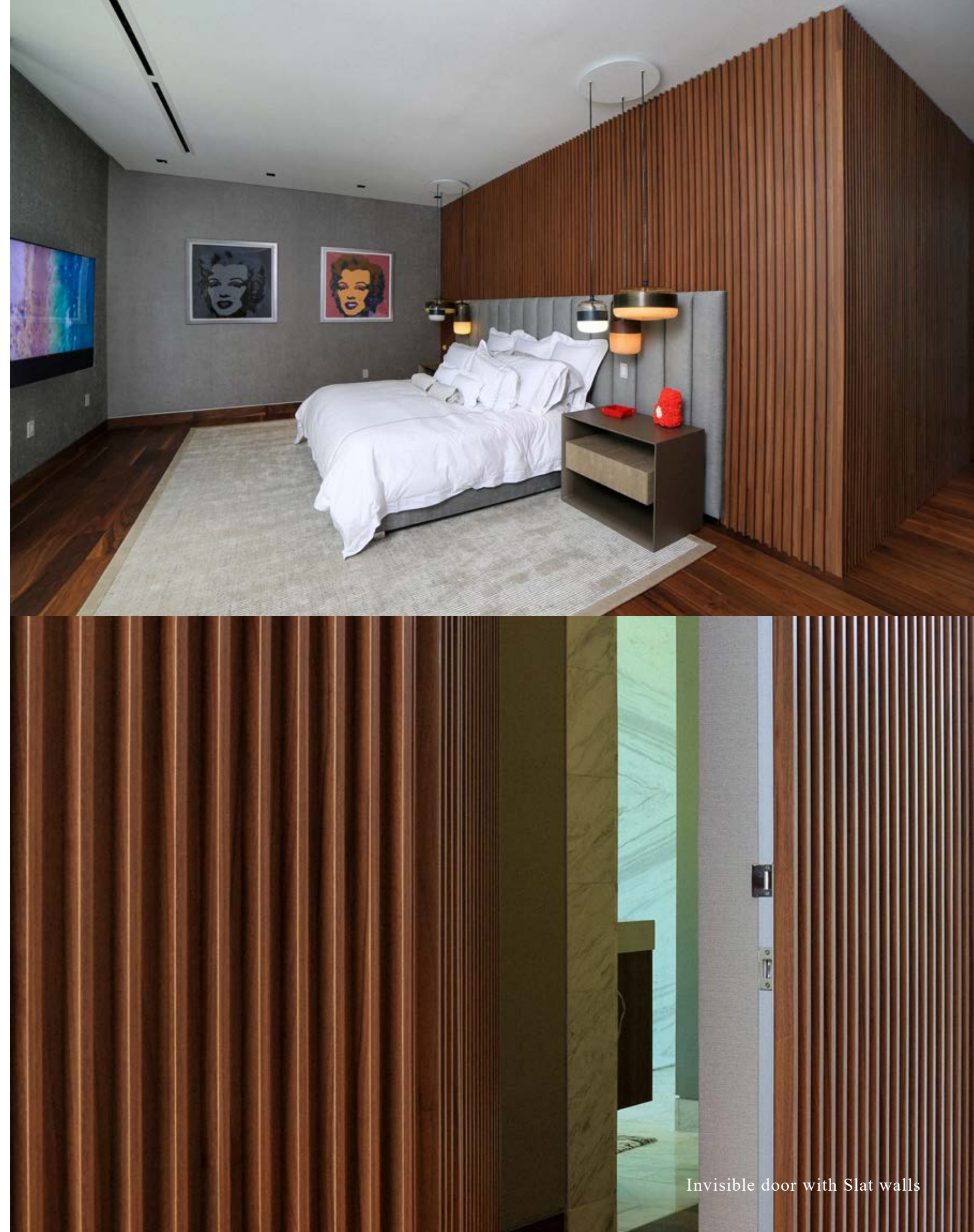
Enhanced by the warmth of a wooden jamb casting a shadow along its perimeter, the DAYORIS Ombra door seamlessly bridges the gap between modern design and traditional architectural styling.







Filo muro/ Black matte lacquer



Invisible door with Slat walls

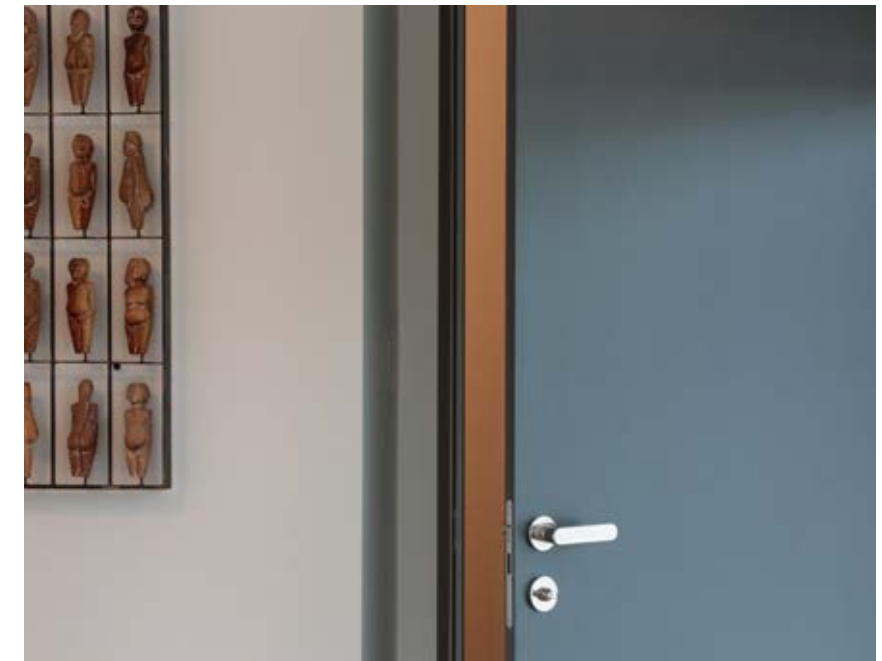






With the use of Slat wall paneling we see the task of formulating the exact sort of environment each and every client envisions.

Designer slat and wall paneling is a powerful trend in modern contemporary design.



Slat Wall and Columns





OUR TEAM



DESIGNED BY DANNY SOROGON



Adaleen / Estimating and Accounting Department

Adaleen plays a critical role in financial management, cost estimation, budgeting, financial analysis, and ensuring compliance within the company. Her work helps drive financial stability, informed decision-making, and effective resource allocation.

Melissa / New Client Acquisitions

Melissa’s responsibilities encompass identifying & onboarding new clients and customers for Dayoris products and services. Her role is crucial for expanding the company’s customer base, increasing revenue, and targeting business growth goals.



Miggy / Accounting Department

Miggy is in charge of managing resources efficiently, making informed strategic decisions, and ensuring compliance with financial regulations. Her accurate and thorough accounting practices are essential for the success and sustainability of Dayoris.

Mariangel / Estimating and Sales Department

Mariangel is responsible for thoroughly understanding the client’s needs and objectives. Through effective communication and active listening, she gains a deep understanding of the client’s project requirements.



Scott / Principal

Scott possesses strong leadership skills to guide Dayoris towards its strategic goals and objectives. He has the ability to develop a clear, long-term vision for the growth and success within the door industry..

Dan / Principal

The role of Dan in Dayoris is multifaceted, involving strategic marketing, financial management, operational oversight, innovation and team leadership. His decisions and actions have a significant impact on the company’s success.





Javier / Lead Project Manager

Javier is a versatile and dynamic Architect who plays a crucial role in the entire project lifecycle. From initiation to closure, Javier takes charge of overseeing every aspect and ensures that all objectives are met and stakeholders are satisfied.

Juan / Lead Project Manager

Juan brings a strong attention of detail to every task. With a focus on customer satisfaction, he excels in overseeing all aspects of projects, ensuring accuracy and upholding high quality standards throughout the project lifecycle.



Moises / Production Coordinator

Moises plays a vital role in overseeing and managing many aspects of the production process. His primary responsibility is to ensure that the production operations run smoothly and efficiently, meeting the company's quality standards.

Javier V. / Design & Marketing

Javier's role involves a combination of creative design skills and strategic marketing expertise. As an architect, he brings an integral perspective to Dayoris, understanding precisely what the company aims, assuring the project success.



Jose / Lead West Coast Project Manager

Jose assumes a pivotal role throughout the project journey, particularly in West Coast projects. From project inception to its successful conclusion, he takes charge of overseeing every aspect, ensuring the attainment of both client and Dayoris goals.





DEVELOPED BY PRESTIGE CONSTRUCTION AND DESIGN



Michel / Lead Shop Manager

With 10 years at DAYORIS, Michel excels in organizational skills, efficiently managing tasks, prioritizing workloads, and maintaining attention to detail. As a skilled team manager, he inspires staff to achieve goals and deliver exceptional service.

Johnny / Lead CNC Operator

Jhonny has been with Dayoris for three years, starting as an apprentice and working his way up to come a skilled CNC machinist. Advanced machinist operation, technical expertise, attention to detail, cutting edge technology.



Carmelo / Lead Shipping Division

Carmelo has taken the helm of Dayoris Shipping division, bringing his invaluable expertise to ensure the safe and secure delivery of the doors. Global Shipping Capabilities, Timely Delivery with Utmost Care, Reliable and Secure Shipping Solutions.

Angel / Lead Framing Division

Angel is a key figure in the construction and supervision of DAYORIS door frames. Utilizing high-end machinery, Angel ensures precision in measurements, shaping, and assembly. Angel and his team posses a keen eye for accuracy and precision.



Ernesto / Assistant Shop Manager

Ernesto is a key contributor, providing vital support in day-to-day operations, staff supervision, and ensuring a well-organized shop environment. His unwavering dedication and effort are crucial in achieving the company’s goals and ensuring the success of projects.

Jose / Production Manager Door Division

Jose assumes a diverse array of responsibilities to guarantee the seam- less and effective functioning of the production process. He establishes and upholds quality control protocols, ensuring that the doors manu- factured meet and also surpass industry standards.





German / Quality Control

German is the gatekeeper of product excellence, ensuring that every door that leaves Dayoris meets the highest standards. The satisfaction of knowing that his attention to detail directly contributes to the safety, functionality, and aesthetics of the final product.

Amaury - Frame Assembly

Amaury’s role is of utmost importance. He is responsible for crafting high-quality door frames that significantly enhance the durability and functionality of the finished doors. His commitment ensures only the best frames.



Arlen / Framing Division

Arlen plays a hands-on role in the production of door frames. He needs to combine technical understanding, attention to detail, physical capability, and effective communication to contribute to the division’s success while prioritizing safety and quality.

Rolando / Service Technician

Rolando possess a combination of technical skills, attention to detail, problem-solving abilities, and a commitment to safety and customer service. These characteristics are essential for delivering high-quality door installations and ensuring customer and project satisfaction..



Geos / Painter

Geos is an important member of our team. He has a strong foundation in painting techniques, including brushwork, spraying, and staining. He is able to apply paint evenly and smoothly to achieve a high-quality finish on doors.

Pablo / Lead Craftsman

Pablo, our lead craftsman, is the go-to expert for tasks that demand a level of artistry and precision beyond what machinery can achieve. His specialty lies in employing unique and refined craftsmanship techniques to ensure that every project is executed exceptionally well.



CUSTOM PROJECT DELMARE PLACE IN FORT LAUDERDALE





BEL AIR CUSTOM HOME CALIFORNIA



Carlos / Service Technician

Carlos embodies a unique blend of technical expertise, meticulous attention to detail, problem-solving capabilities, and a unwavering dedication to both safety and customer satisfaction. These qualities are fundamental to achieving excellence in door installations.

Alberto / Door Manufacturing Division

Alberto’s craftsmanship guarantees that every door is meticulously crafted according to exact specifications, encompassing precise measurements, alignments, and finishing details. His pivotal role is instrumental in securing the division’s success.



Oswaldo / Lead Painter

Oswaldo is accountable for maintaining high-quality standards throughout the painting process. He inspects completed work, identifies any defects, ensuring that the finished product meets the required specifications.

PRODUCTS



FILO MURO/ doors flush with the wall



FILO/ doors flush with casing



TELAIO/ doors with raised casing



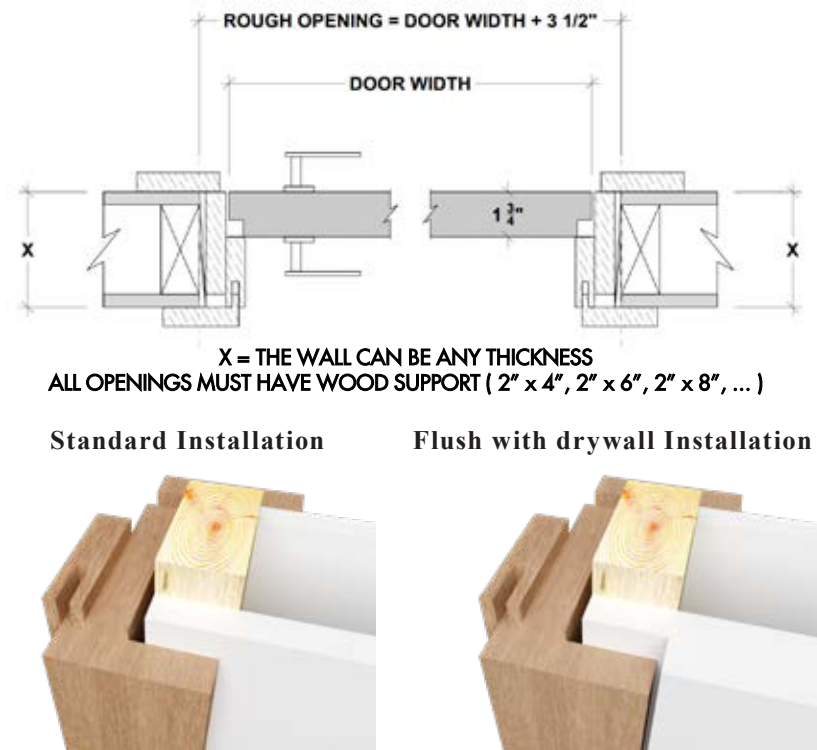
OMBRA/ floating jamb with shadow reveal



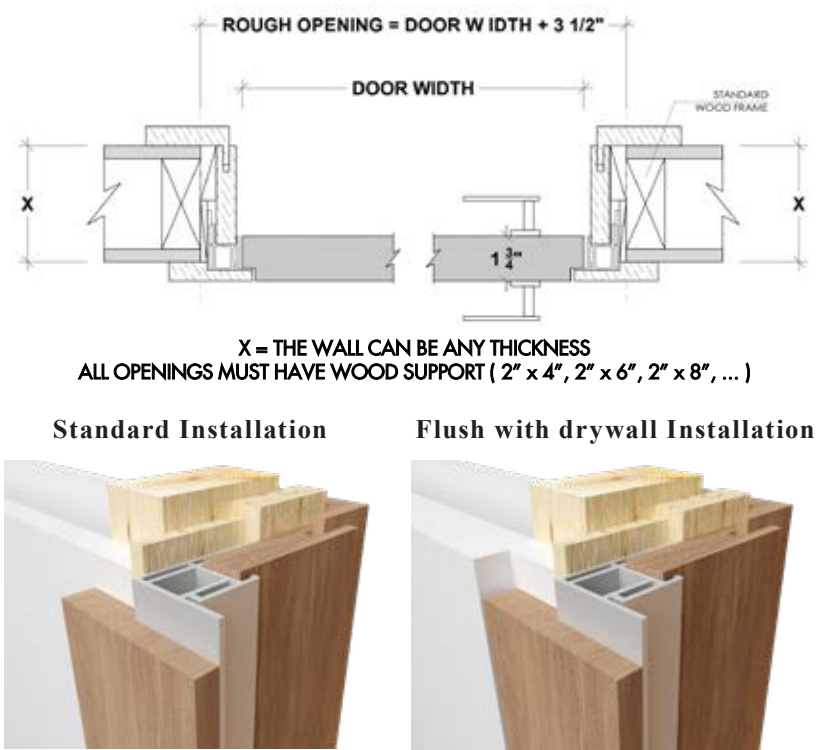
FILO MURO/ Frameless, flush with the wall



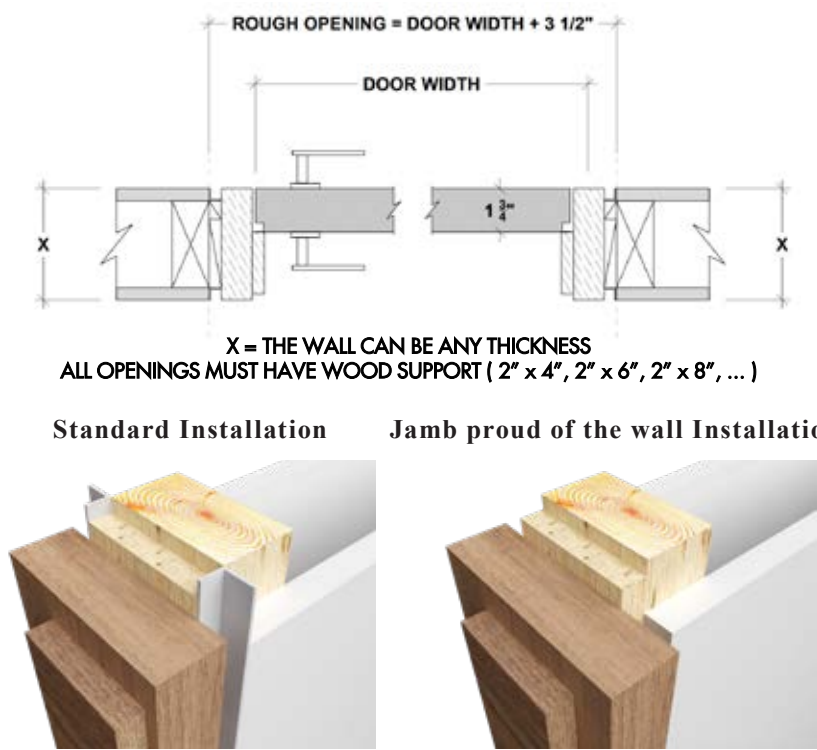
TELAIO/ Doors with raised casing



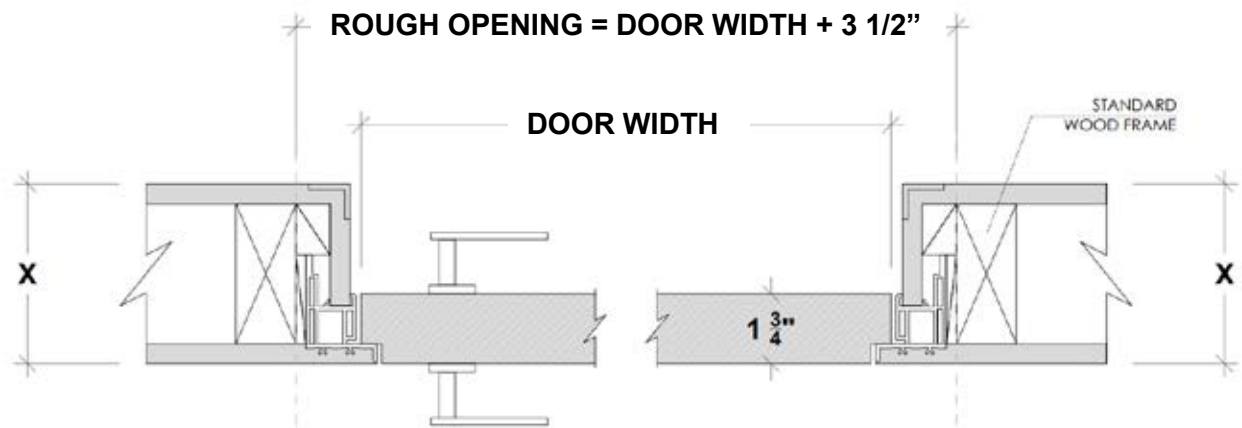
FILO/ Doors flush with casing



OMBRA/ Floating jamb with shadow reveal



FILO MURO/ FRAMELESS, FLUSH WITH THE WALL



X = THE WALL CAN BE ANY THICKNESS
ALL OPENINGS MUST HAVE WOOD SUPPORT (2" x 4", 2" x 6", 2" x 8", ...)

FILO MURO/ SPECIFICATIONS:



FILO MURO/
SWING DOORS PDF



FILO MURO/
POCKET DOORS PDF



FILO MURO/
EURO DOORS PDF



FILO MURO/
BIFOLD DOORS PDF



FILO MURO/
BYPASS DOORS PDF



FILO MURO/
PIVOT DOORS PDF



FILO MURO/
GHOST DOORS PDF



FILO MURO/
BARN DOORS PDF



FILO MURO/
REGLET PDF



FILO MURO/
FINISHING INSTRUCTIONS PDF

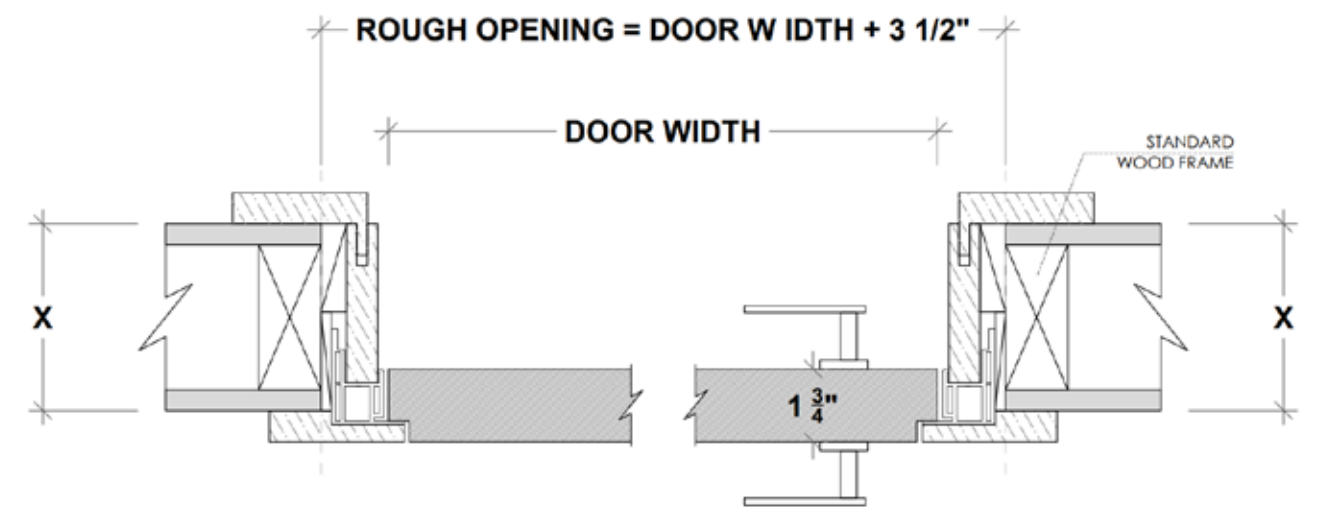


Filo muro/ Natur, floor to ceiling application



DETAILS

FILO/ DOORS FLUSH WITH CASING



X = THE WALL CAN BE ANY THICKNESS
ALL OPENINGS MUST HAVE WOOD SUPPORT (2" x 4" , 2" x 6" , 2" x 8" , ...)

FILO/ SPECIFICATIONS:



FILO/
SWING DOORS PDF



FILO/
POCKET DOORS PDF



FILO/
EURO DOORS PDF



FILO/
BIFOLD DOORS PDF



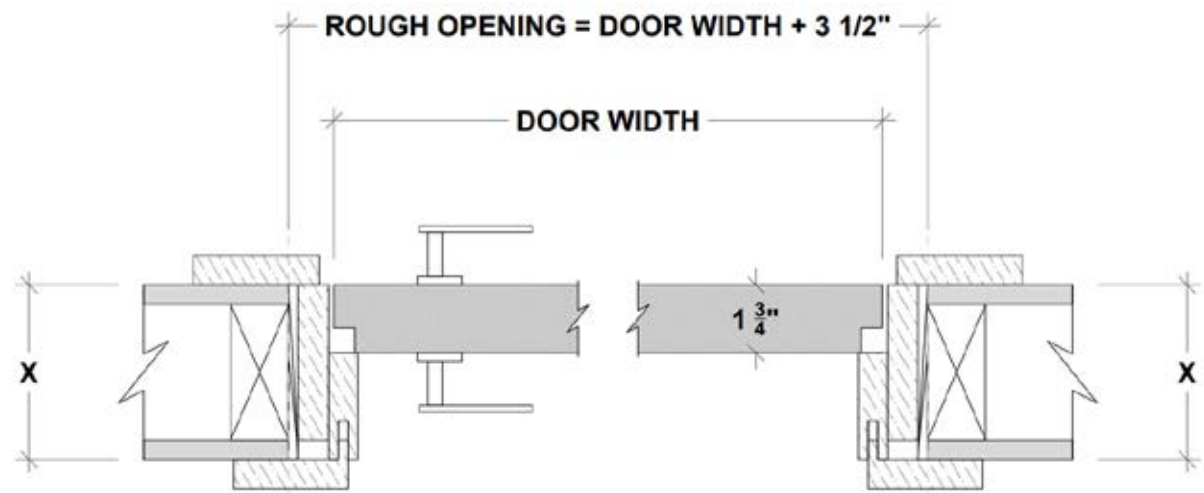
FILO/
BYPASS DOORS PDF



FILO/
PIVOT DOORS PDF



TELAIO/ DOORS WITH RAISED CASING



X = THE WALL CAN BE ANY THICKNESS
ALL OPENINGS MUST HAVE WOOD SUPPORT (2" x 4", 2" x 6", 2" x 8", ...)

TELAIO/ SPECIFICATIONS:



TELAIO/
SWING DOORS PDF



TELAIO/
POCKET DOORS PDF



TELAIO/
EURO DOORS PDF



TELAIO/
BIFOLD DOORS PDF



TELAIO/
BYPASS DOORS PDF



TELAIO/
PIVOT DOORS PDF



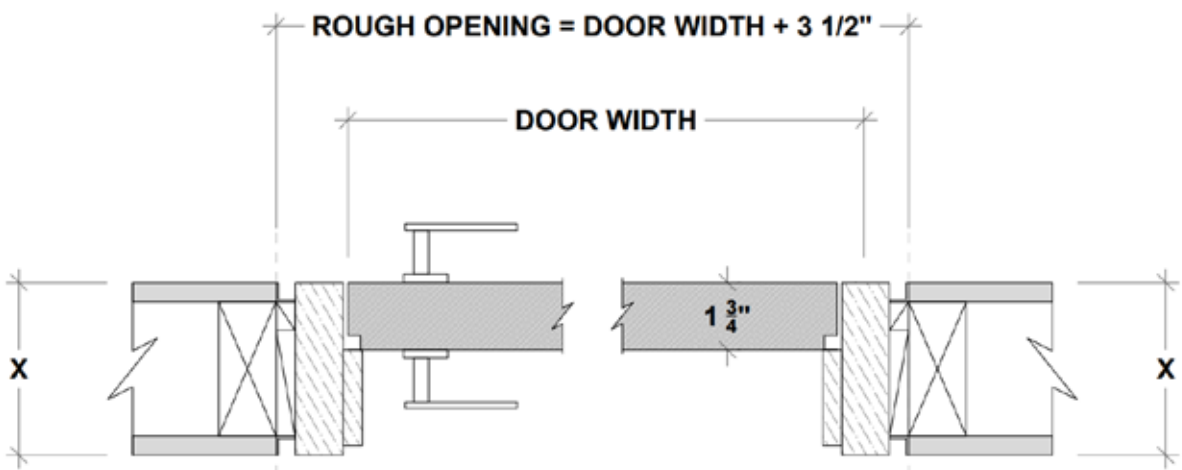
Telaio/ Stained white oak, design: Shaker 4



Ombra/ Natur

DETAILS

OMBRA/ FLOATING JAMB WITH SHADOW REVEAL



X = THE WALL CAN BE ANY THICKNESS
ALL OPENINGS MUST HAVE WOOD SUPPORT (2" x 4", 2" x 6", 2" x 8", ...)

OMBRA/ SPECIFICATIONS:



OMBRA/
SWING DOORS PDF



OMBRA/
POCKET DOORS PDF



OMBRA/
EURO DOORS PDF



OMBRA/
BIFOLD DOORS PDF



OMBRA/
BYPASS DOORS PDF



OMBRA/
PIVOT DOORS PDF



PANEL/ DOORS AND PANELING APPLICATIONS



PANEL/ SPECIFICATIONS:



PANEL/
SWING DOORS PDF



PANEL/
EURO DOORS PDF



PANEL/
BIFOLD DOORS PDF



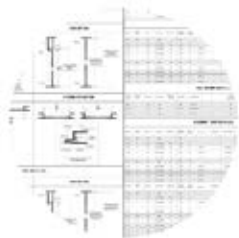
PANEL/
PIVOT DOORS PDF

Outswing Profile

Inswing Profile



PLEASE ACCOUNT FOR FINISHED FLOOR FOR ALL MEASUREMENTS GIVEN TO DAYORIS.



1. FLOOR PLAN /
DOOR SCHEDULE

Client sends basic information
of the project, floor plan,
specifications.



2. PROPOSAL SENT
WITHIN 24 / 48 HOURS

Once we receive project details,
our estimators work on the
proposal within 48 hours.



3. PROPOSAL
APPROVED

Dayoris received a formal
approval by mail. Contact
information is in the proposal.



4. PROJECT PLANNER
ASSIGNED

Email intro and set up a Zoom
meeting, details, rough
openings and specs.



5. MASTERSHEET
ALIGNMENT

Creation of a Mastersheet with
all project specifications, details.



6. DOOR
PRODUCTION

Once approved, door
production begins.



7. SHIPPING
SERVICE

Shipping arranged throughout
the US. and abroad.



8. INSTALLATION
PROCESS

We offer installation and
technical support.

THE DAYORIS ADVANTAGE

Imported and Domestic fabrication.

Up to 6' wide and 12' tall.

A complete door package.
(finished door, frame, complete hardware set)

Custom built to specifications.

Expert support staff.

Floor to ceiling application.

Complete vertical process
(design / manufacturing / installation)





THE DAYORIS DIFFERENCE

MAGNETIC LOCKSET



PRIME
LACQUER
LAMINATED
WOOD VENEER



SOLID CORE



CONCEALED HINGE





ARTISANAL

DOOR PROFILES

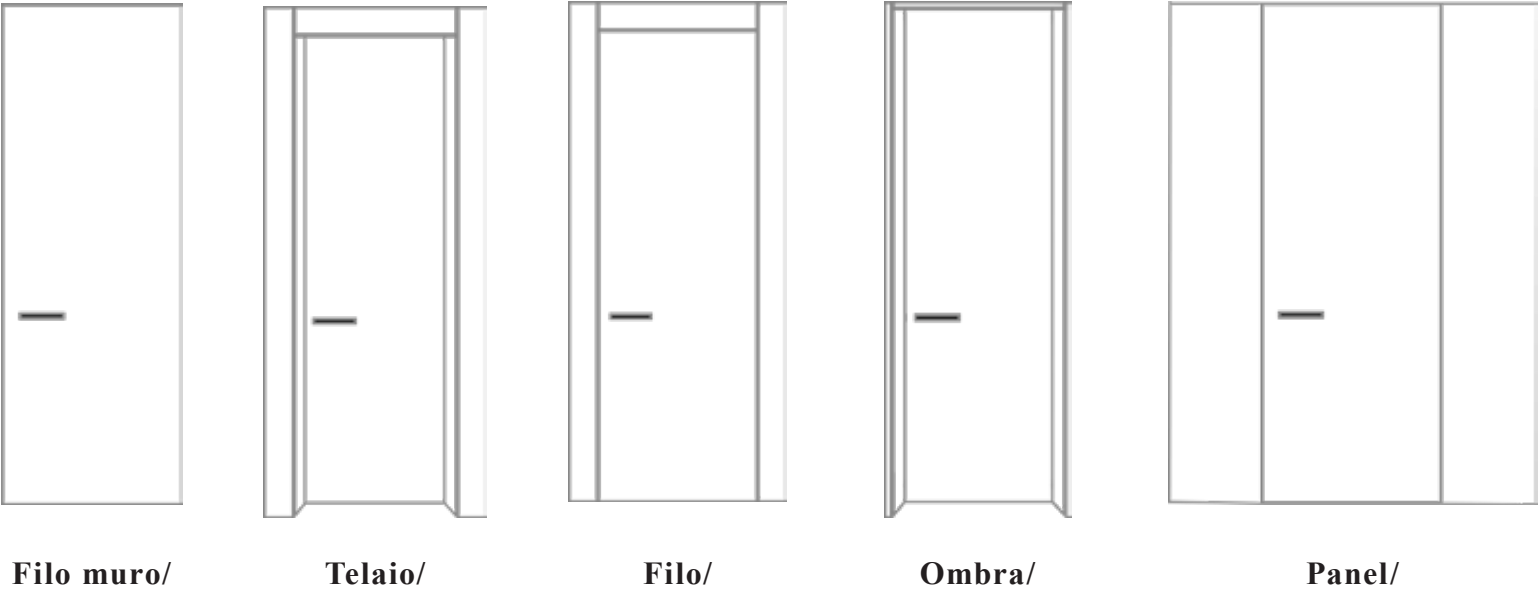
Premium interior door solutions

All of our doors are tailor-made to client specifications, allowing for virtually any size, style, or finish.

Technical Specifications:

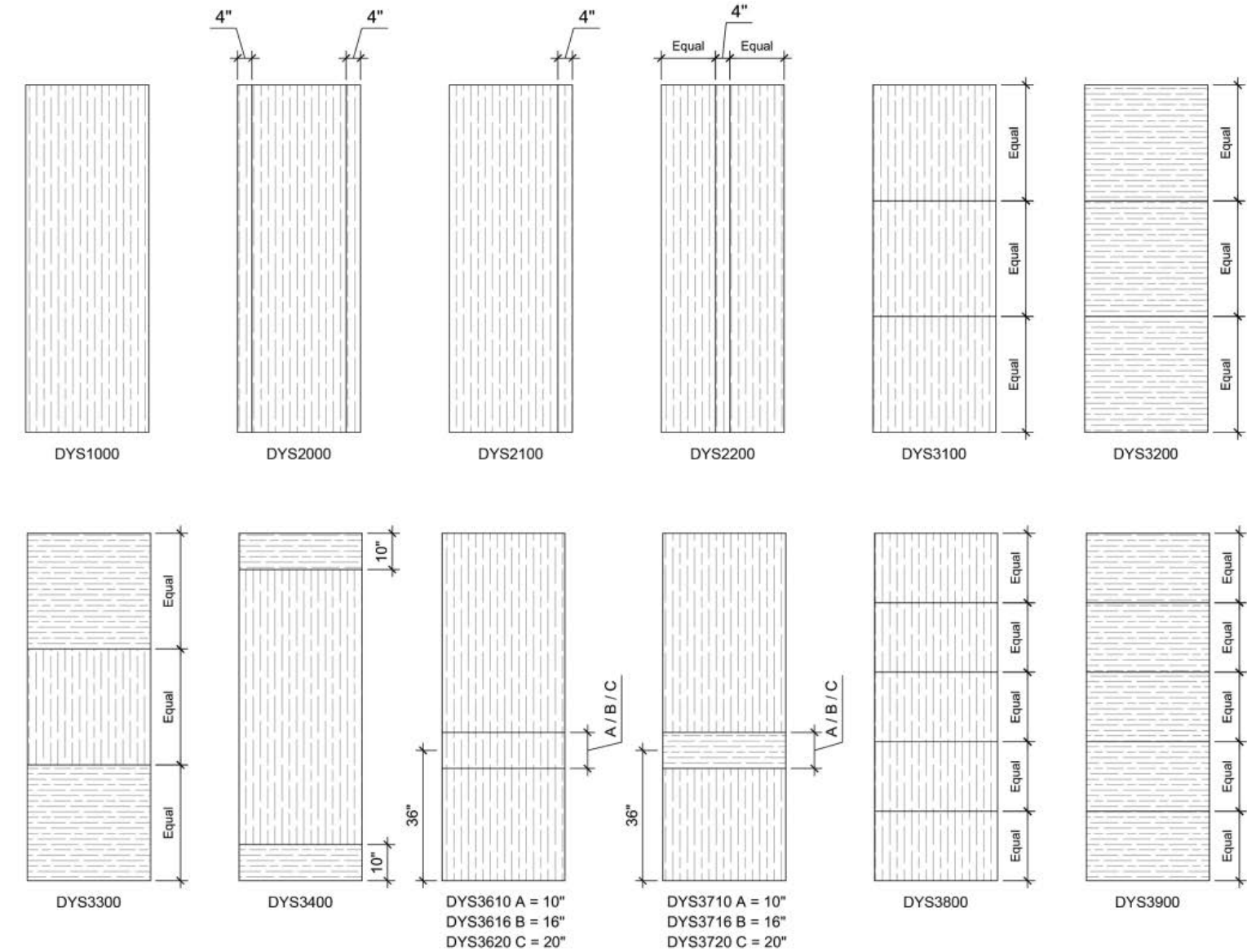
- Door Slab size up to 6’x12’
(Custom Systems available for wider applications)
 - Frames: Frameless profile, wood and metal.
- Primed, Laminated, Lacquer and Wood Veneer finishes.
 - Thickness from 1” to 1 3/4”
 - Standard and Floor to ceiling applications.

Swing/ Pivot/ Pocket/ Bypass/ Euro System 1” Doors/ Euro Bifold 1” Doors/

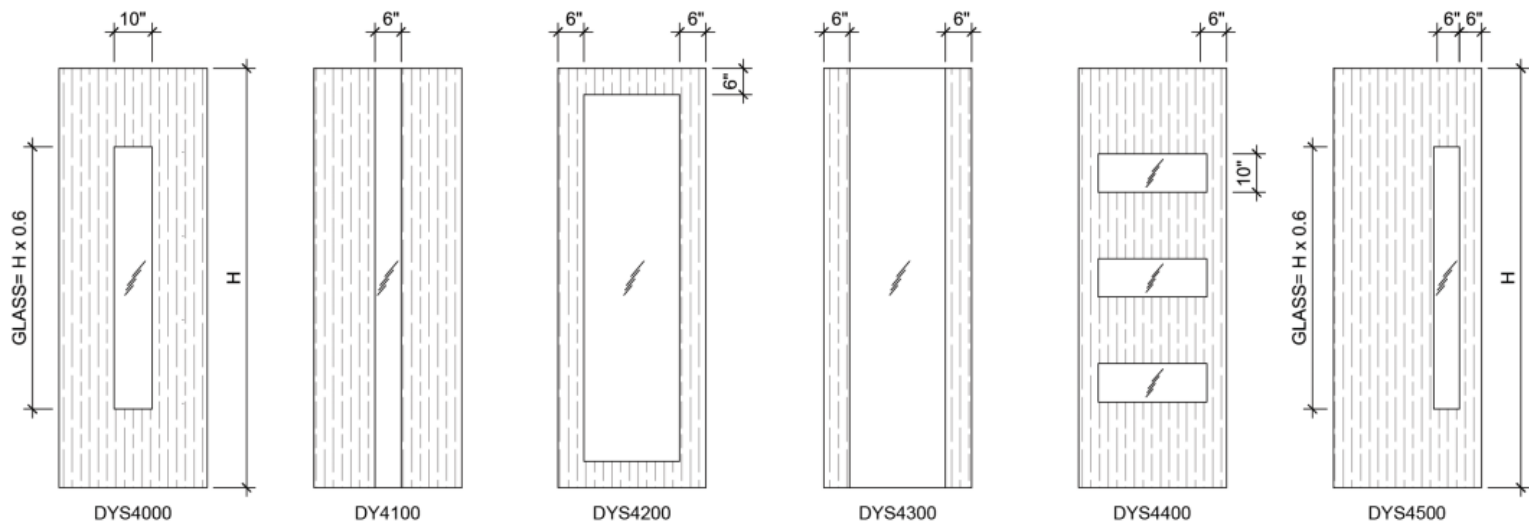


DESIGNS

Reveal Designs (available in 1/8” grooves or 1/2” aluminum inserts)

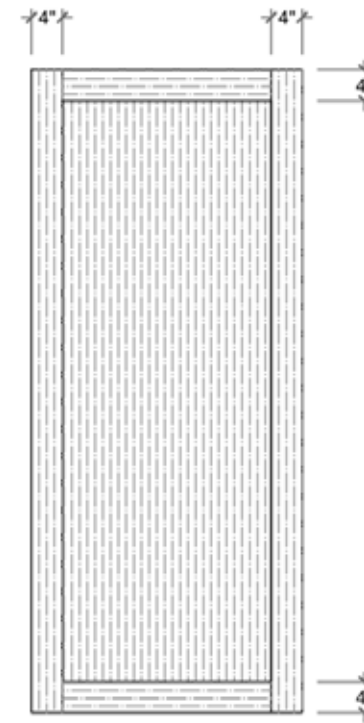


Glass Designs (available in clear or laminated)

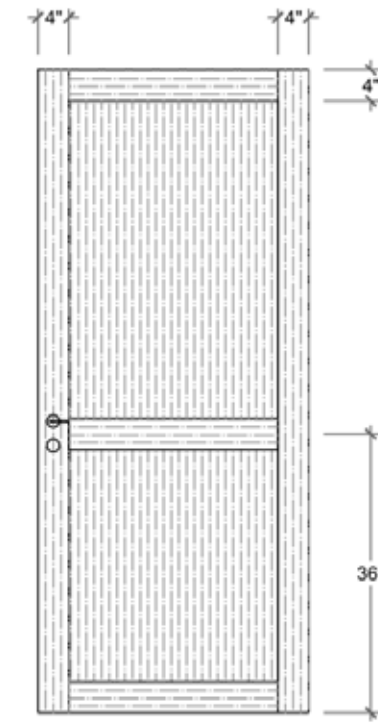




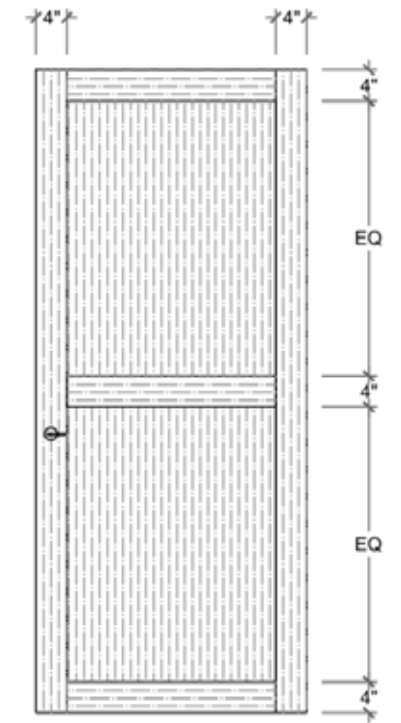
Shaker Designs



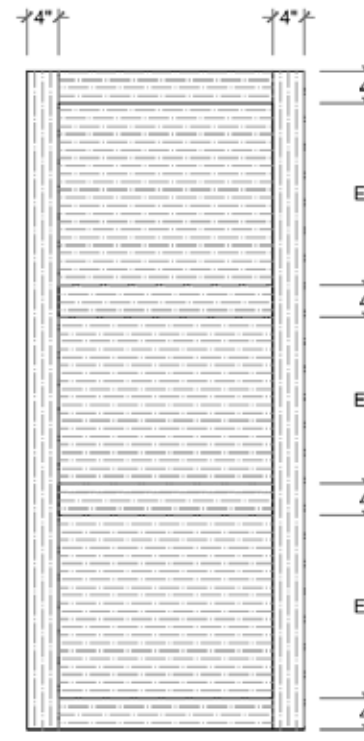
Shaker 1



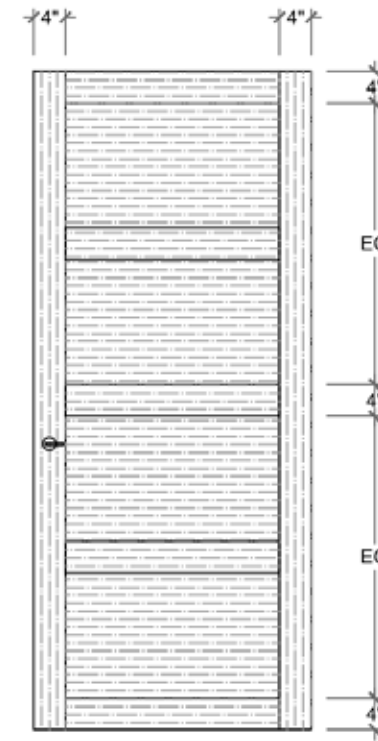
Shaker 2



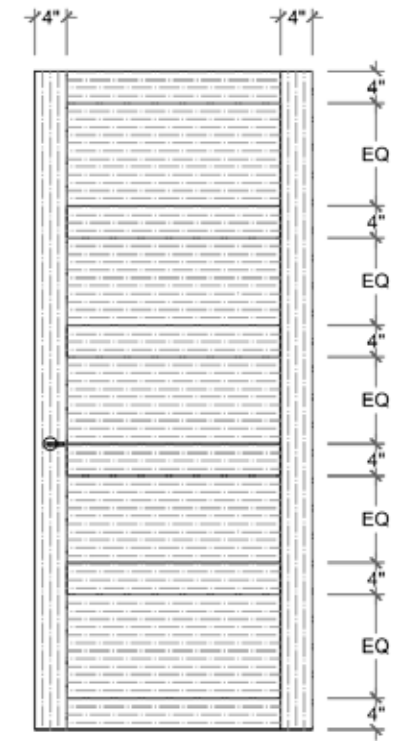
Shaker 3



Shaker 4



Shaker 5



Shaker 6

DAYORIS DOORS SYSTEMS

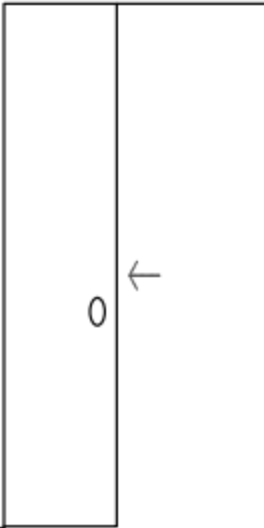
Swing



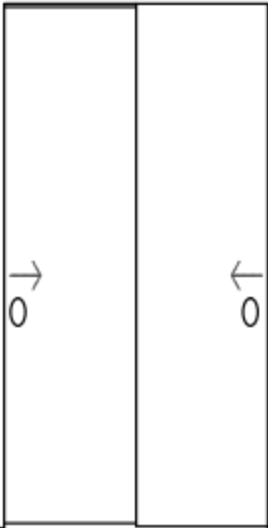
Pivot



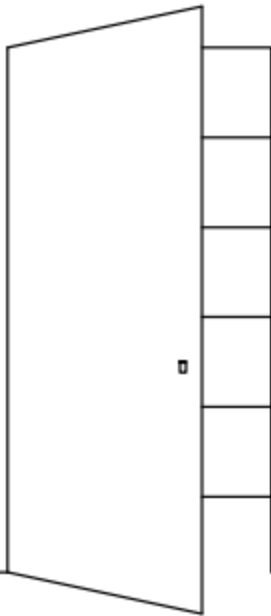
Pocket



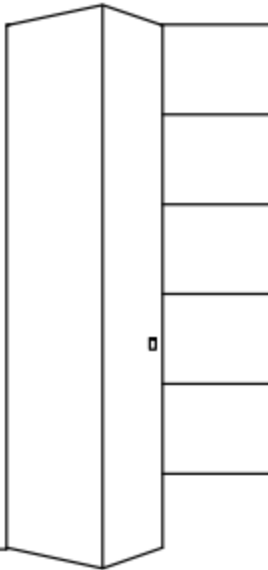
Bypass



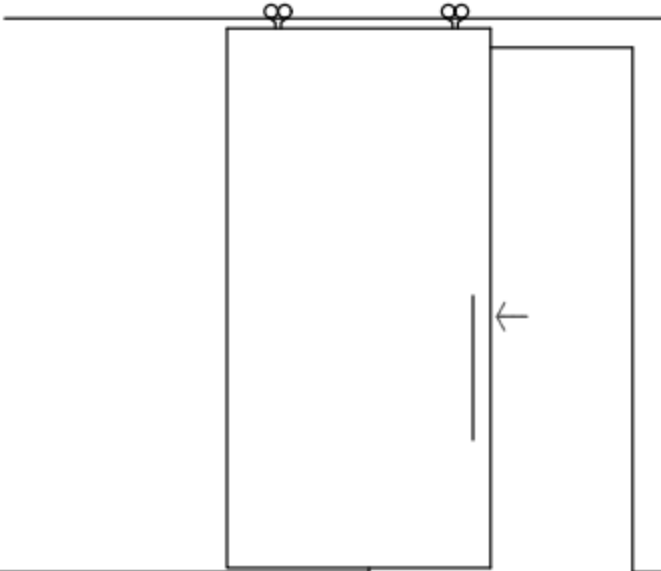
Euro



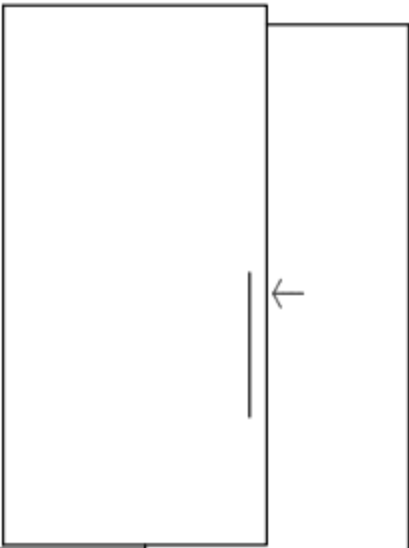
Euro Bifold



Barn

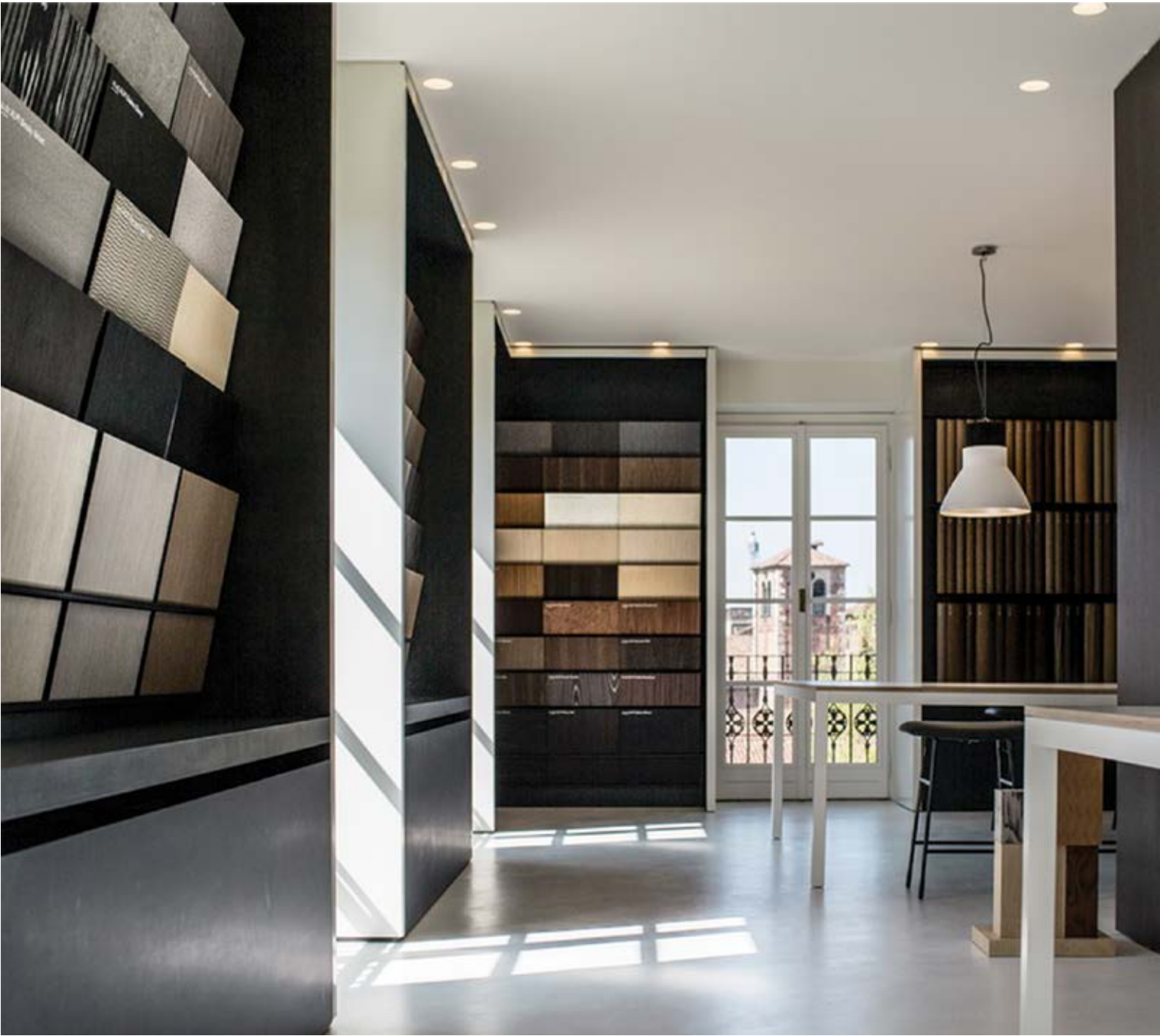


Ghost



FINISHES

DAYORIS offers a wide variety of finishes for Modern Interior Doors. High end materials can be customized to fit individual preferences and requirements. Our selections feature primed, high-end Italian laminates, wood veneers, and matte lacquer finishes.



- Primed (Paint grade finish)
- Laminated Finishes
- Matte Lacquer



Color match available



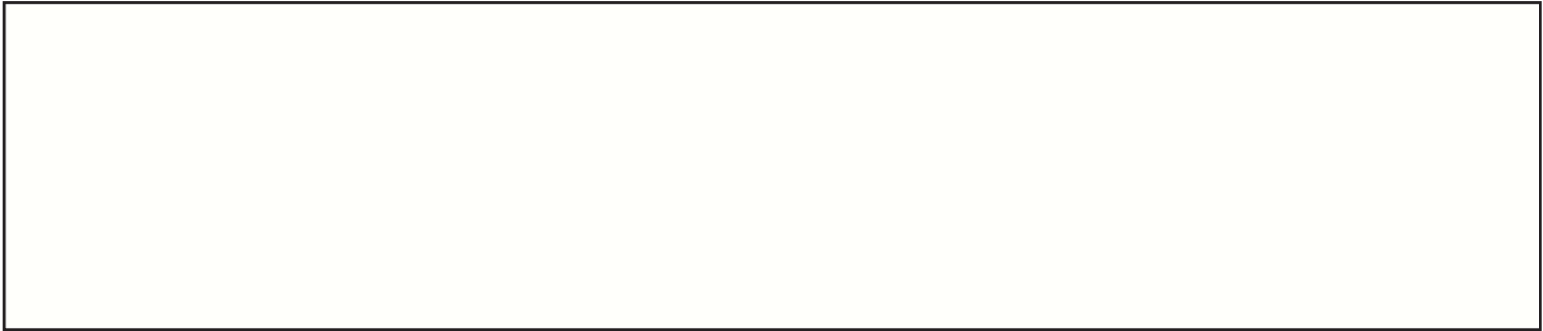
- Wood Veneers (Optional wire brush texture, Custom stain and lacquer)



- Laminated Import - Finsa



Diamon



White Matte



Vernice



Natur



Norey



Nogal Siena



Cherry/ Quercia



Roble Azabache



- Laminated Import - Lamitex



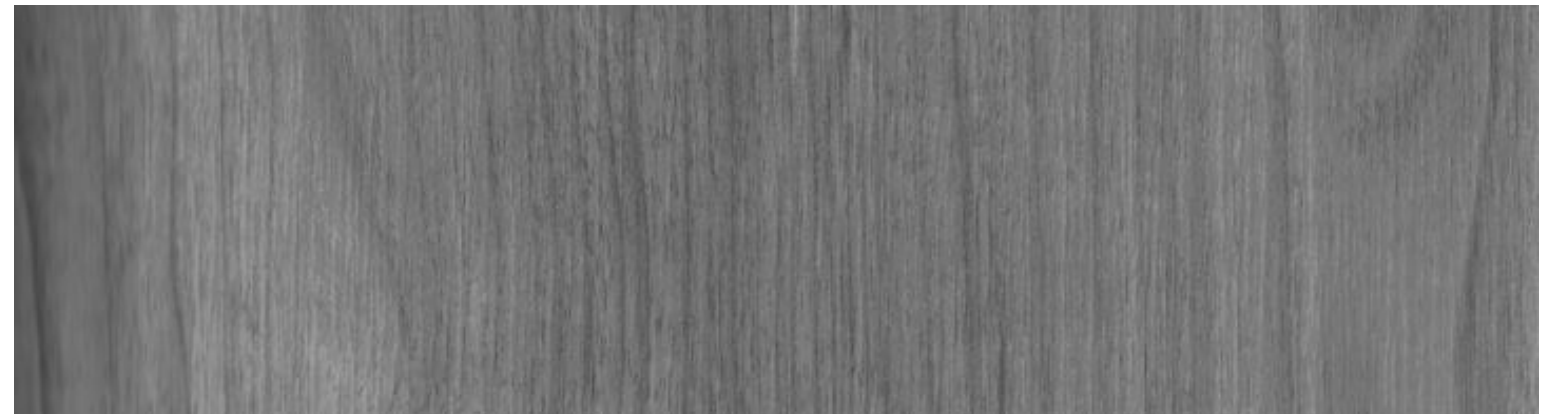
Rovere Ljubliana Tenue - 1340



Noce - 1100



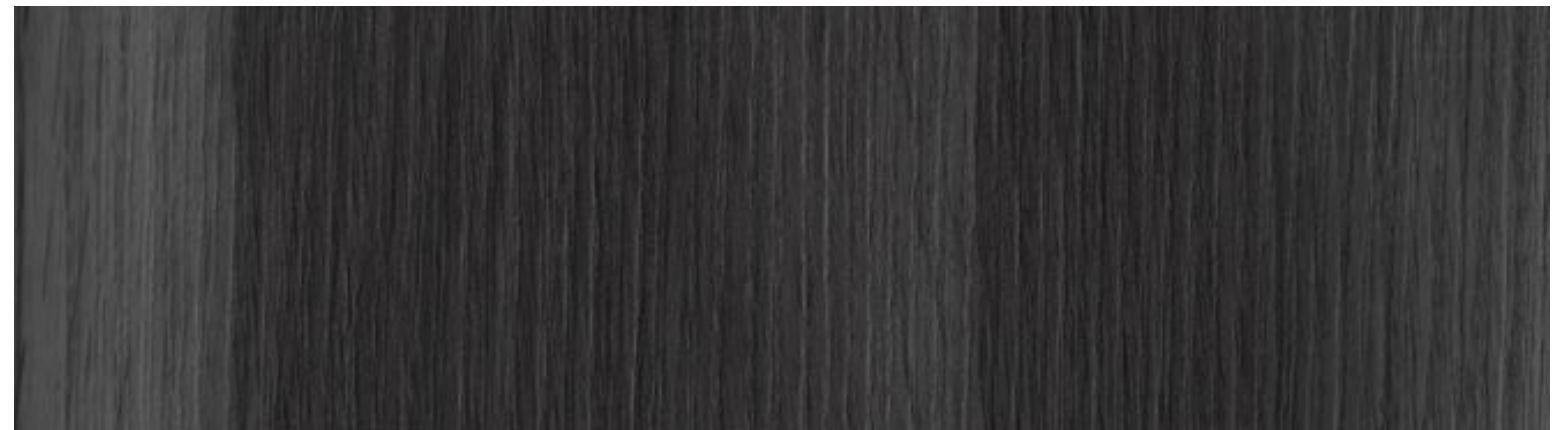
Rovere Arena - 1341



Noce Grigio Argentato - 1124

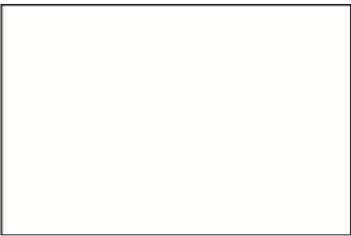


Rovere Navona - 1327



Rovere Cenere - 1326

- Laminated Suncrest - Domestic



White Gloss



White Painted Wood



White Ash



Weathered Ash



Walnut Riftwood



Smoky Pear



Walnut



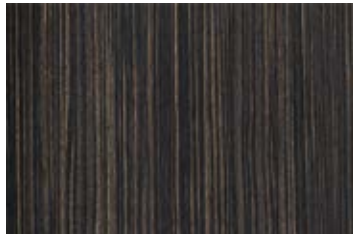
Millenium Oak



Macchiato Walnut



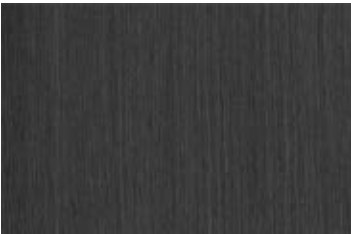
Fox Teakwood



Ebony



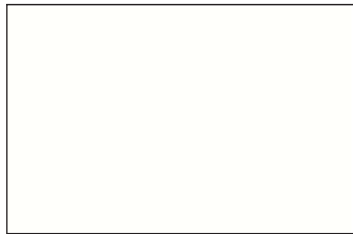
Espresso Pear



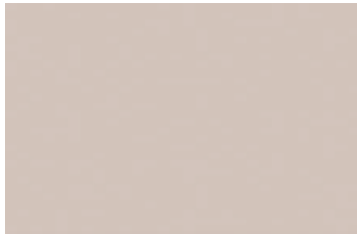
Black Riftwood



Bleached Legno



White Matte SC



Oyster Grey



Mojave

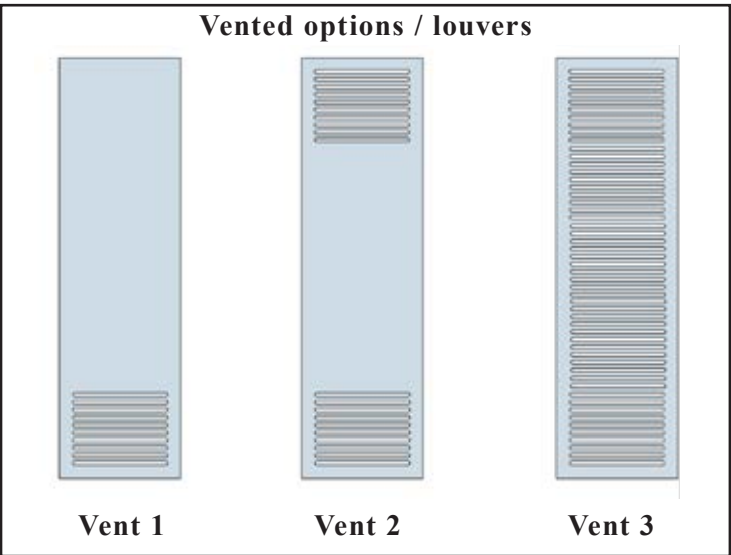


Desert Beige



Otter

- Optional Upgrades



HARDWARE INCLUDED



Round Satin



Round Polished



Flat Round Satin



Flat Round Polished



* Round Black



Square Satin



Square Polished



Twist Satin



Twist Polished



* Square Black

- Custom options

DAYORIS provides personalized options for individuals seeking an added level of customization, luxury, and elegance. Through a partnership with Fimet Handles, you have the opportunity to select from its designs, and DAYORIS will bring your vision to life.



Magnetic Lock

If another Hardware is specified, the magnetic lock is compatible with all major European brands (Vali & Vali, Olivari, Colombo, FSB...)

Black Package

Optional Upgrade:

- Black Hinges
- Black Aluminum Profile
- Black Mortise Lock and Handle



Black Profile



Black Hinges

