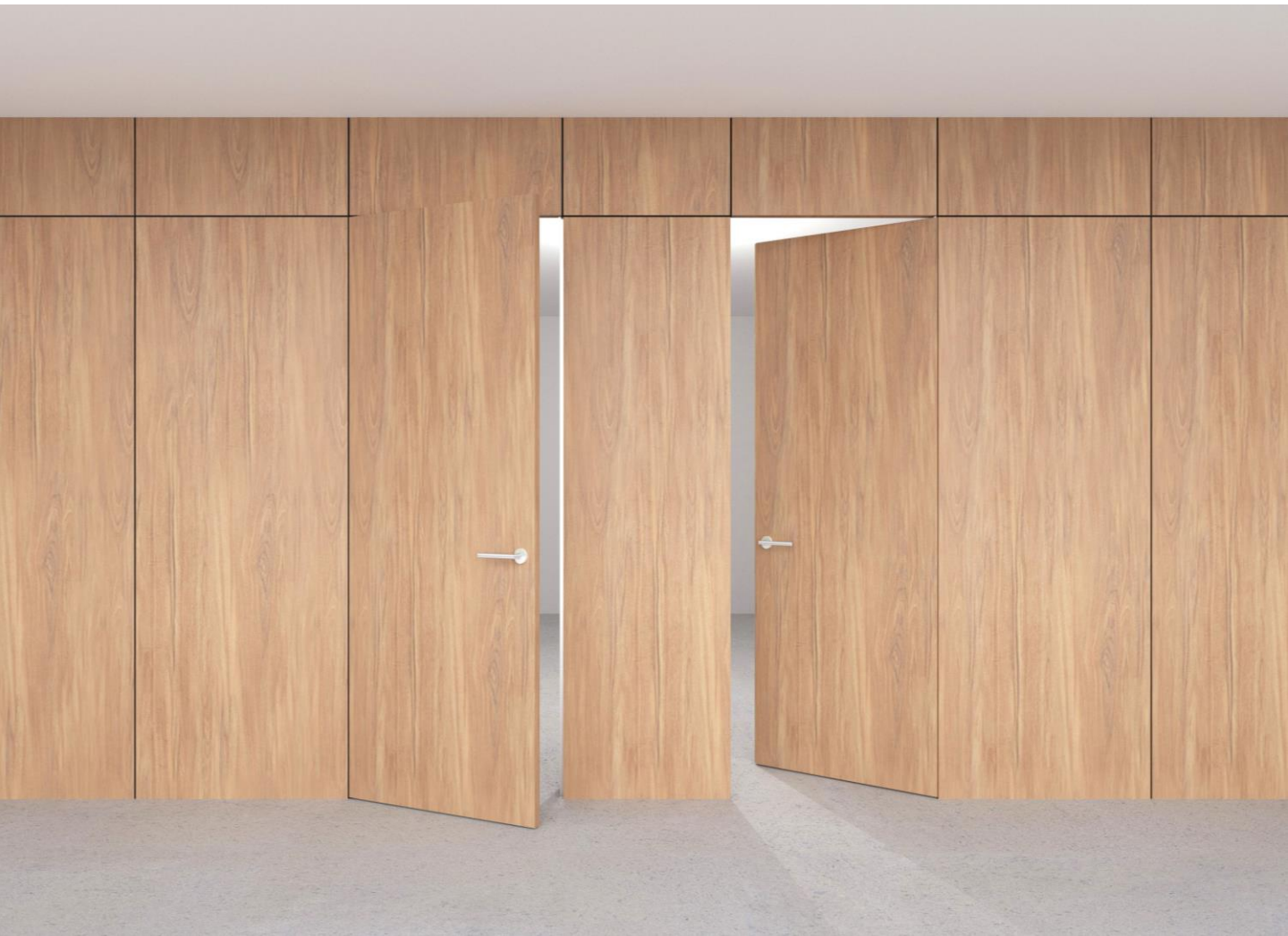


Panel/ paneling and door application

SWING DOOR FOR MILLWORK COORDINATION

(Paneling provided by others, using Dayoris laminated materials)



DAYORIS
DOORS

Types of Applications



What's included

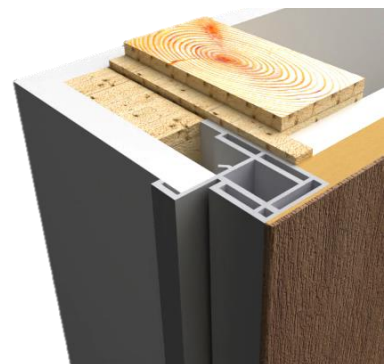
Technical Specifications:

- Finish – Designer's choice
- Frame – Concealed aluminum
- Design – Designers Choice

Frame Profiles



In-swing Profile



Out-swing Profile

* Profiles available in Black as on upgrade.

Panel Detail

Outswing Profile

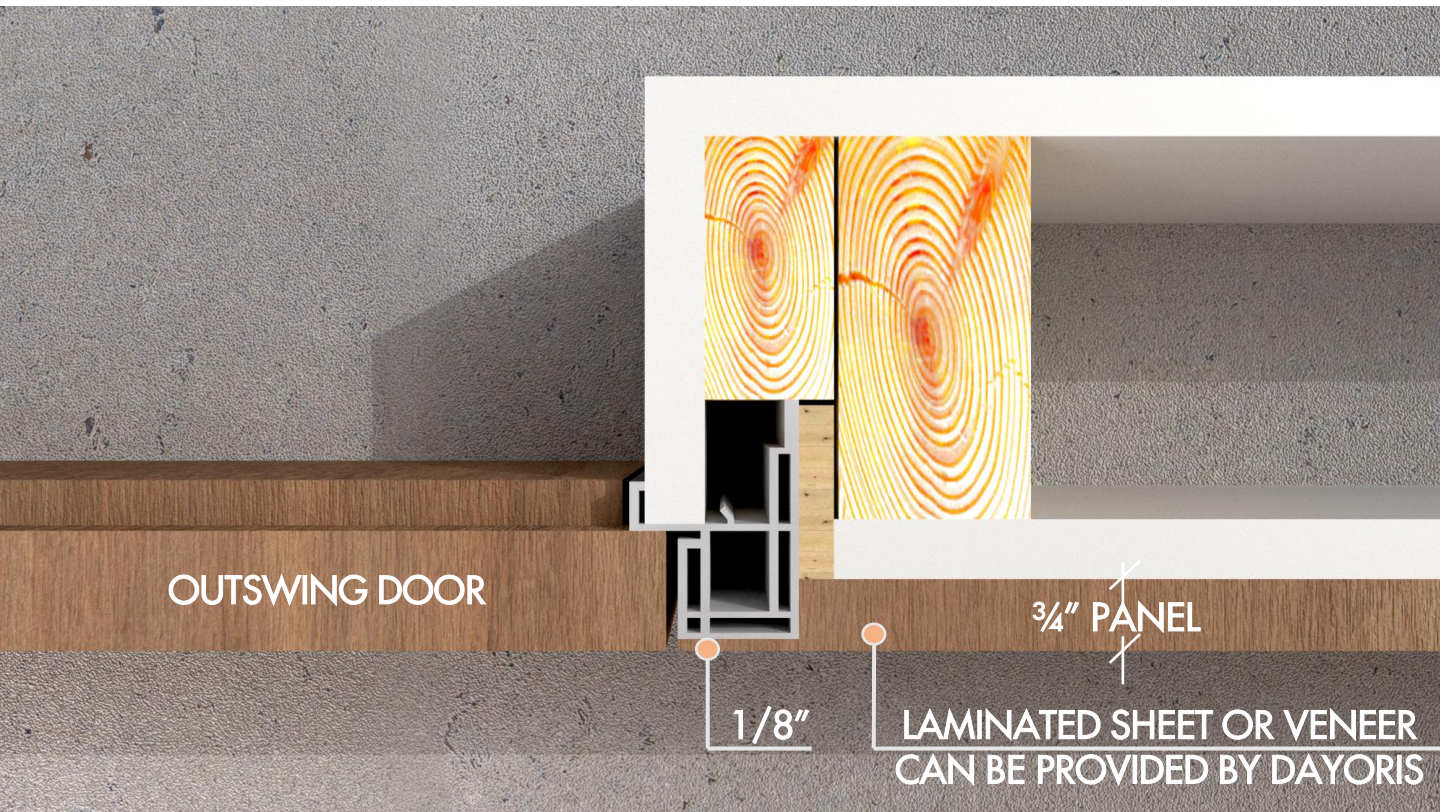
Inswing Profile



PLEASE ACCOUNT FOR FINISHED FLOOR FOR ALL MEASUREMENTS GIVEN TO DAYORIS.

Panel Detail

Outswing Profile



Inswing Profile



Panel Detail

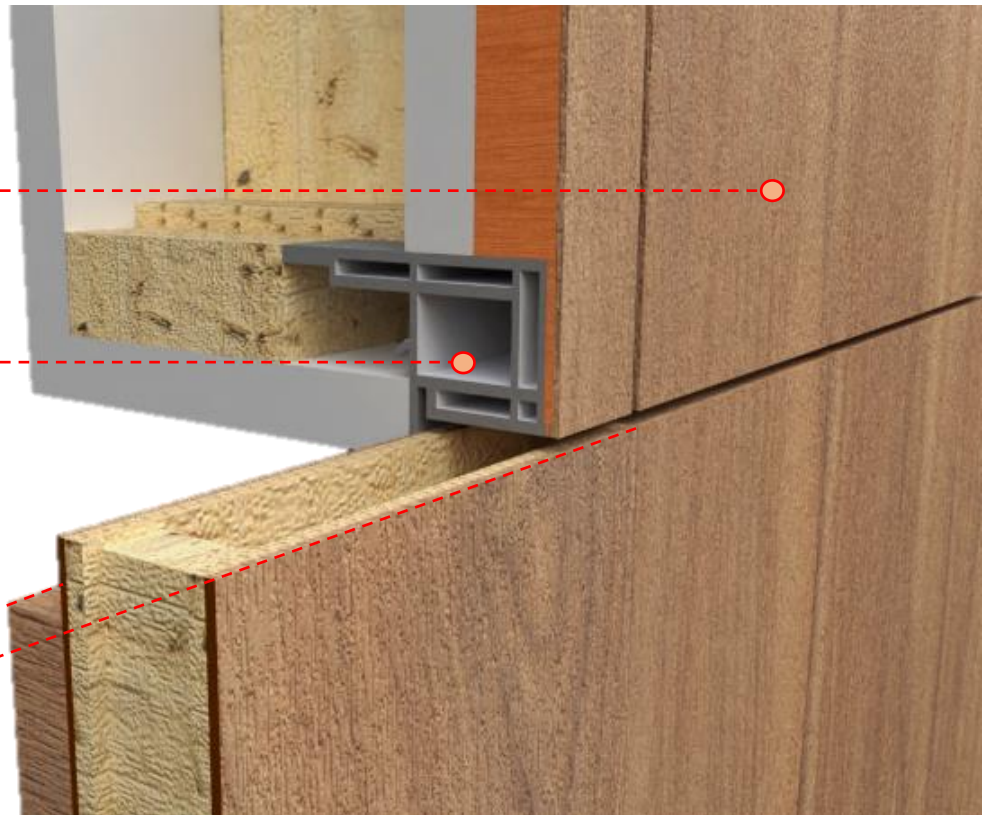
Out-swing Profile

Panel Wall

Outswing Profile

Routed Edges

Visible Door Height =
True Door Height



In-swing Profile

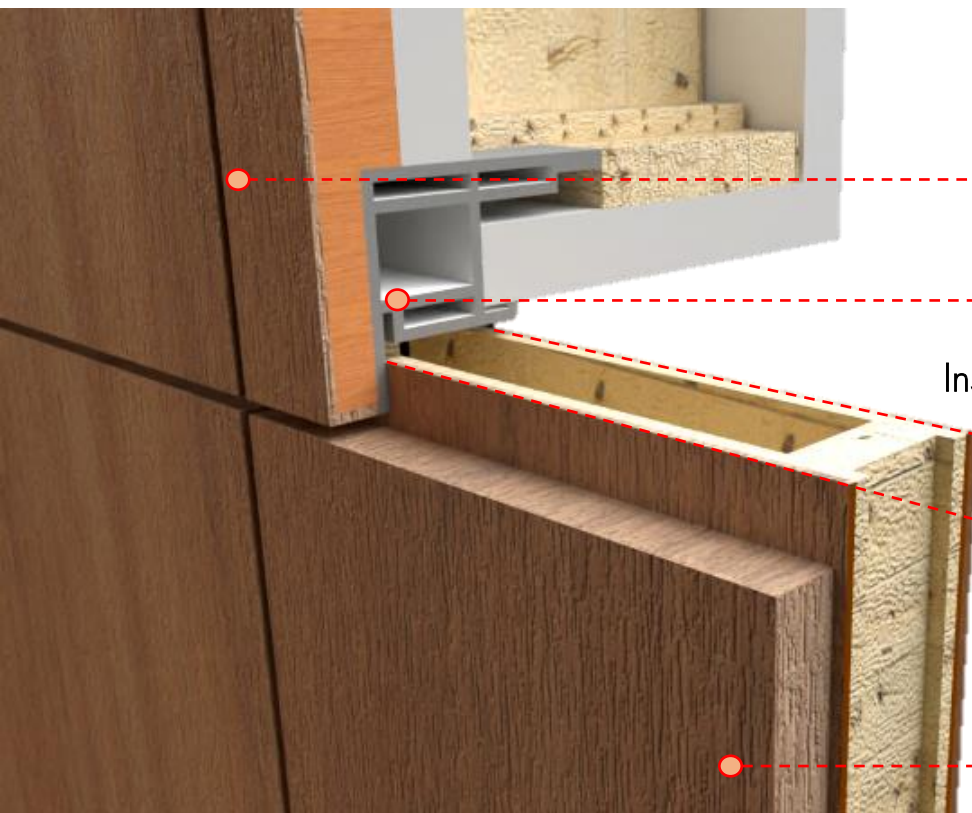
Panel Wall

Inswing Profile

Inswing True Door Height

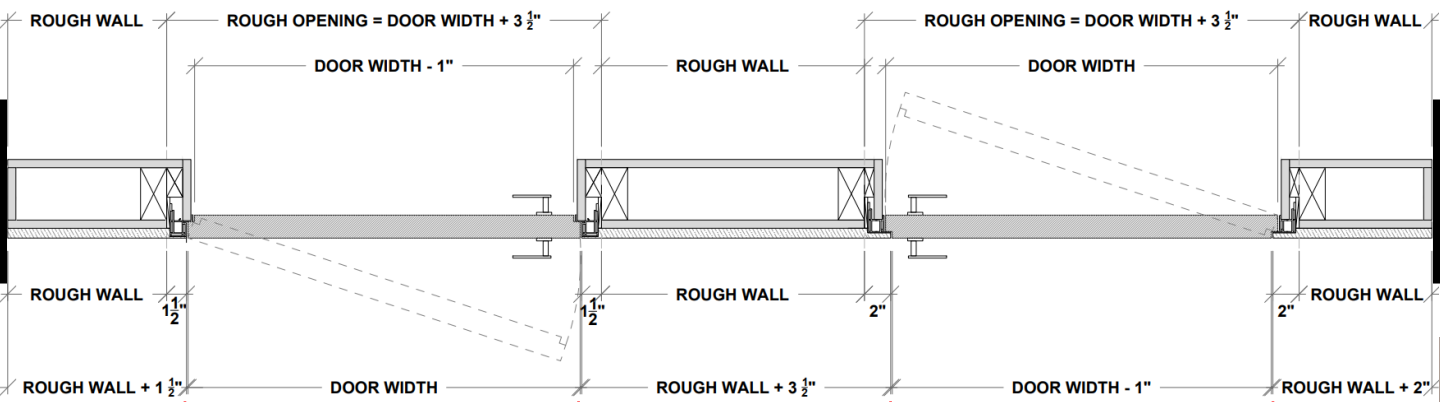
Visible Door Height =
True Door Height - 1/2"

Panel Door



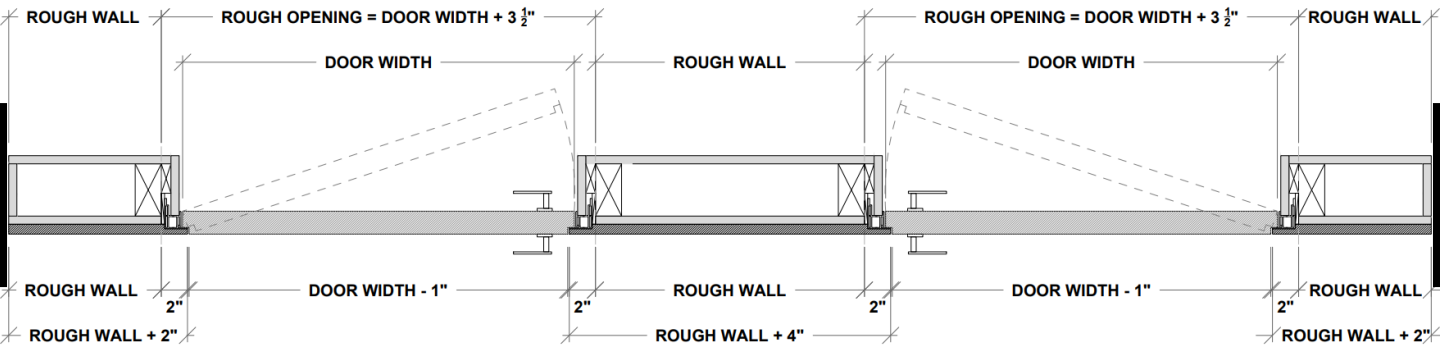
Outswing – Inswing Application

* Based on centered doors in the rough opening for inswing/ outswing application



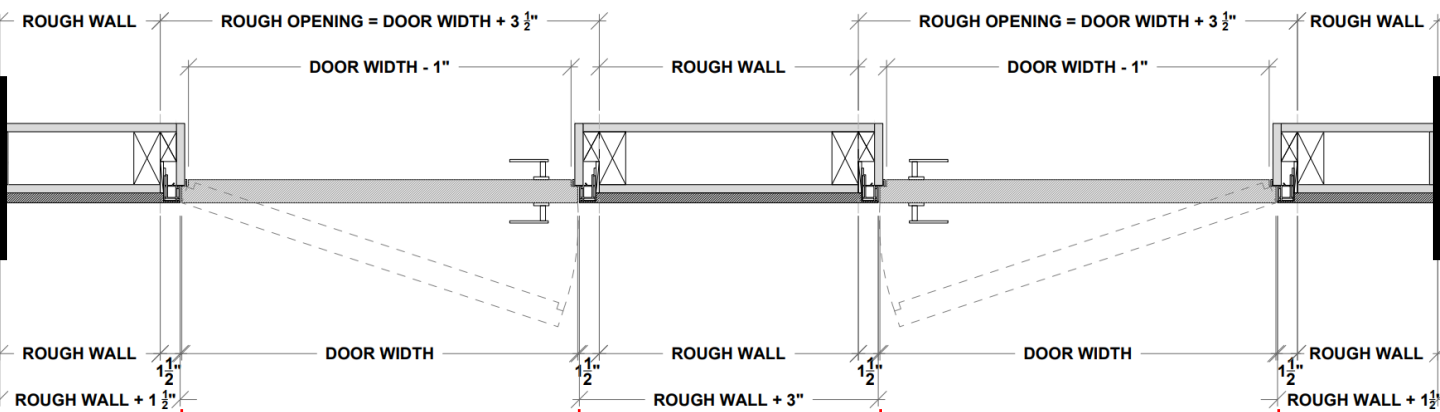
Inswing – Inswing Application

* Based on centered doors in the rough opening for inswing/ outswing application



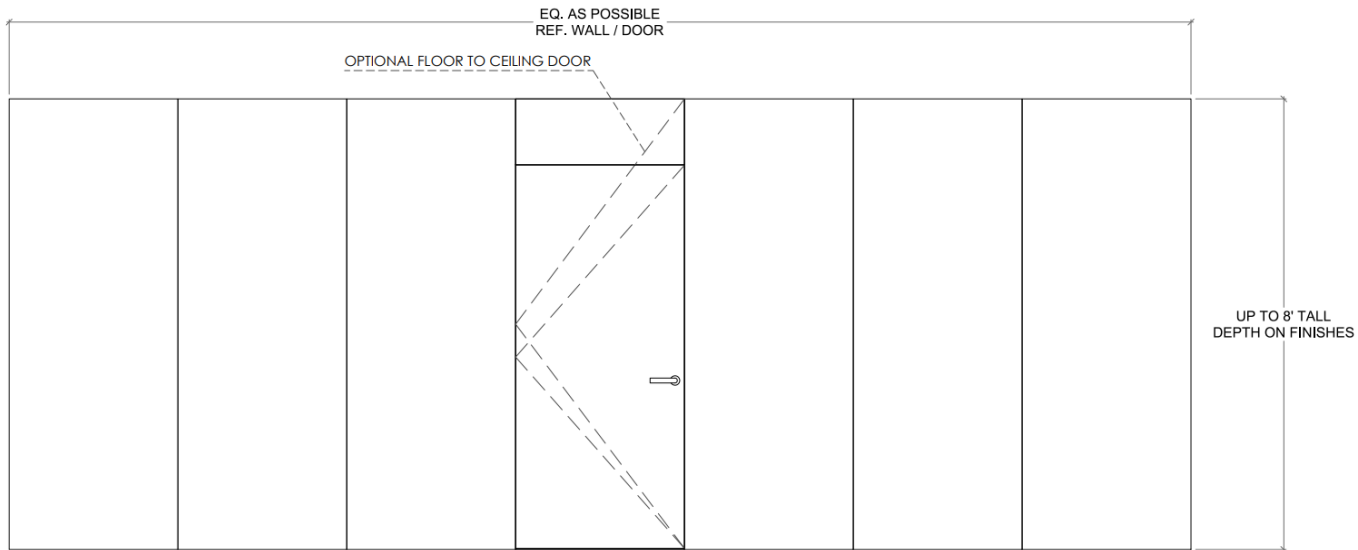
Outswing – Outswing Application

* Based on centered doors in the rough opening for inswing/ outswing application

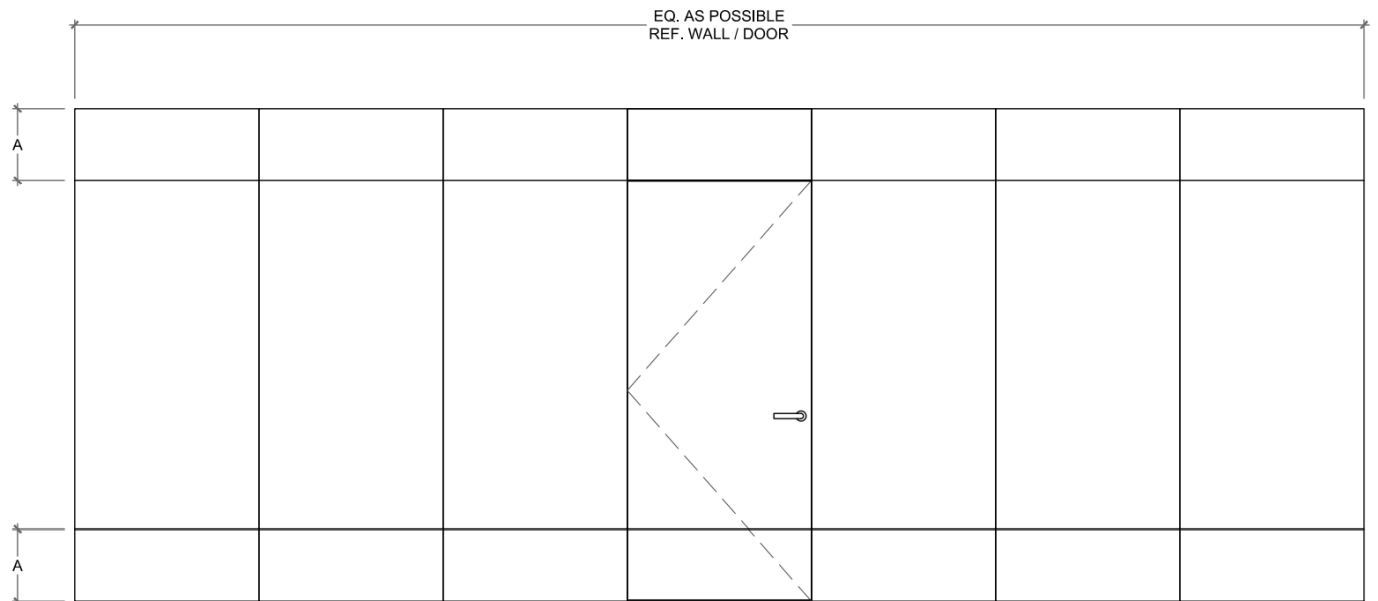


Panel Layout Options

Full Height



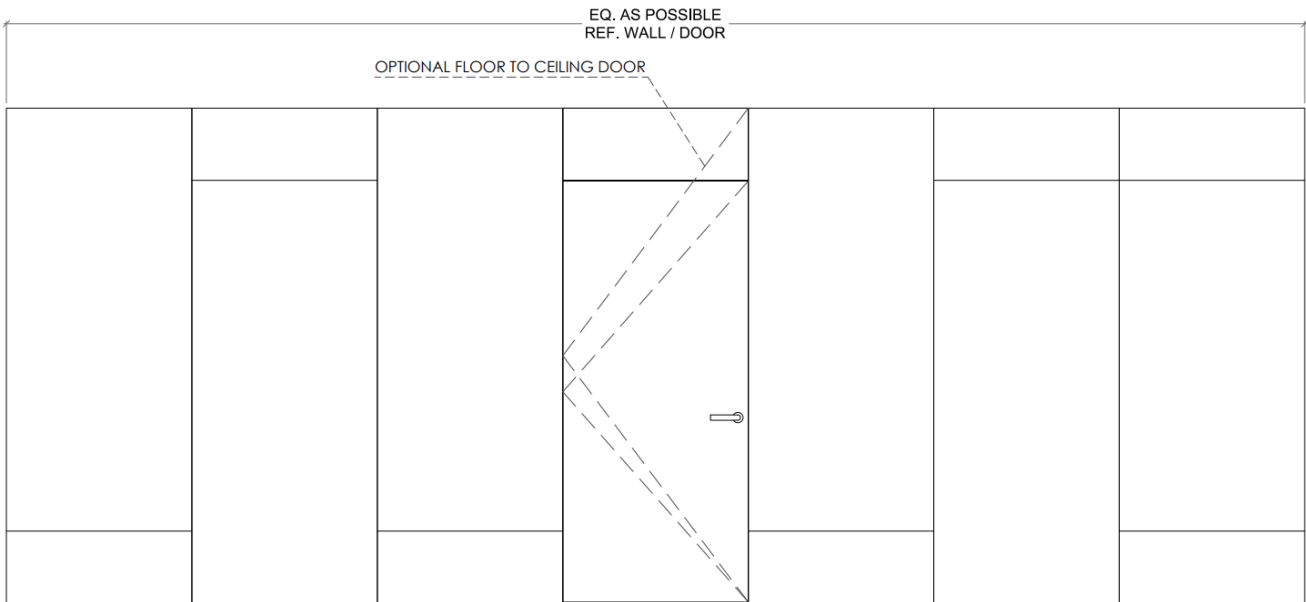
Mirrored Height



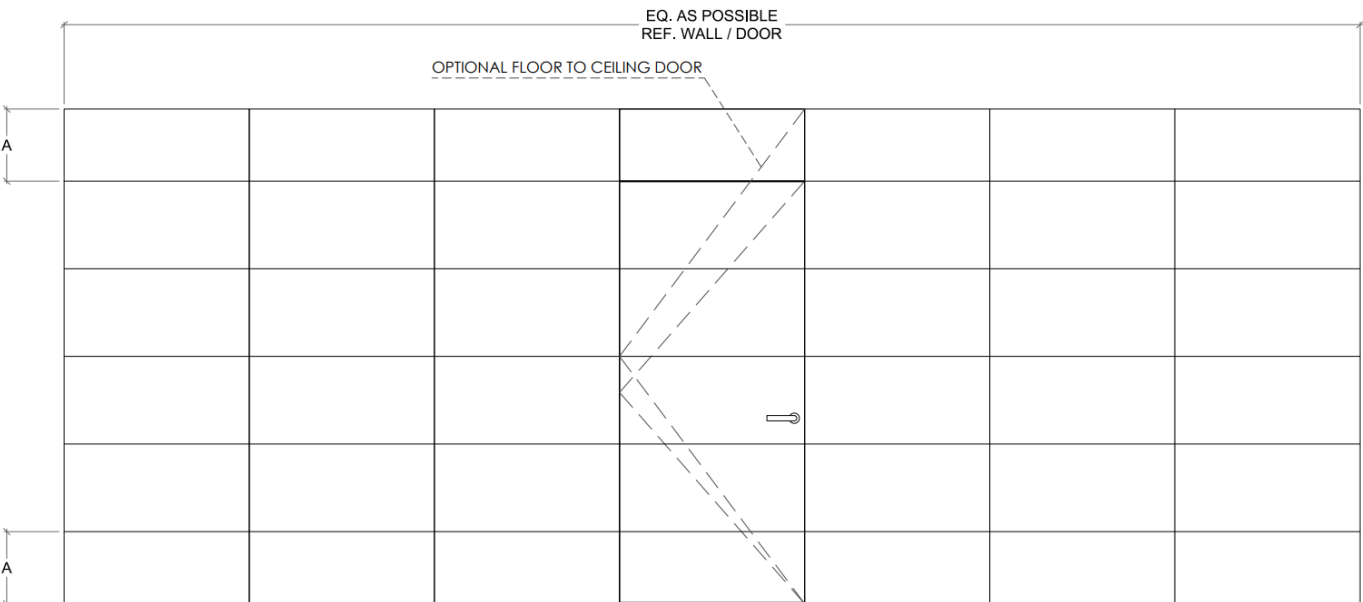
PLEASE ACCOUNT FOR FINISHED FLOOR FOR ALL MEASUREMENTS GIVEN TO DAYORIS.

Panel Layout Options

Reversed Height



Blocks I

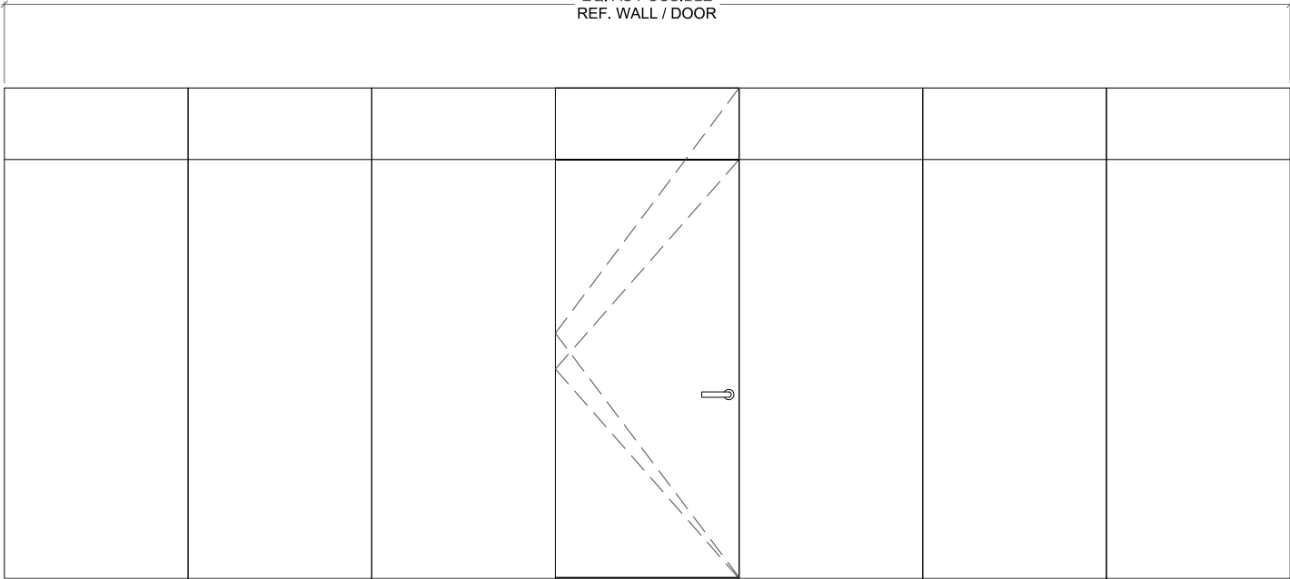


PLEASE ACCOUNT FOR FINISHED FLOOR FOR ALL MEASUREMENTS GIVEN TO DAYORIS.

Panel Layout Options

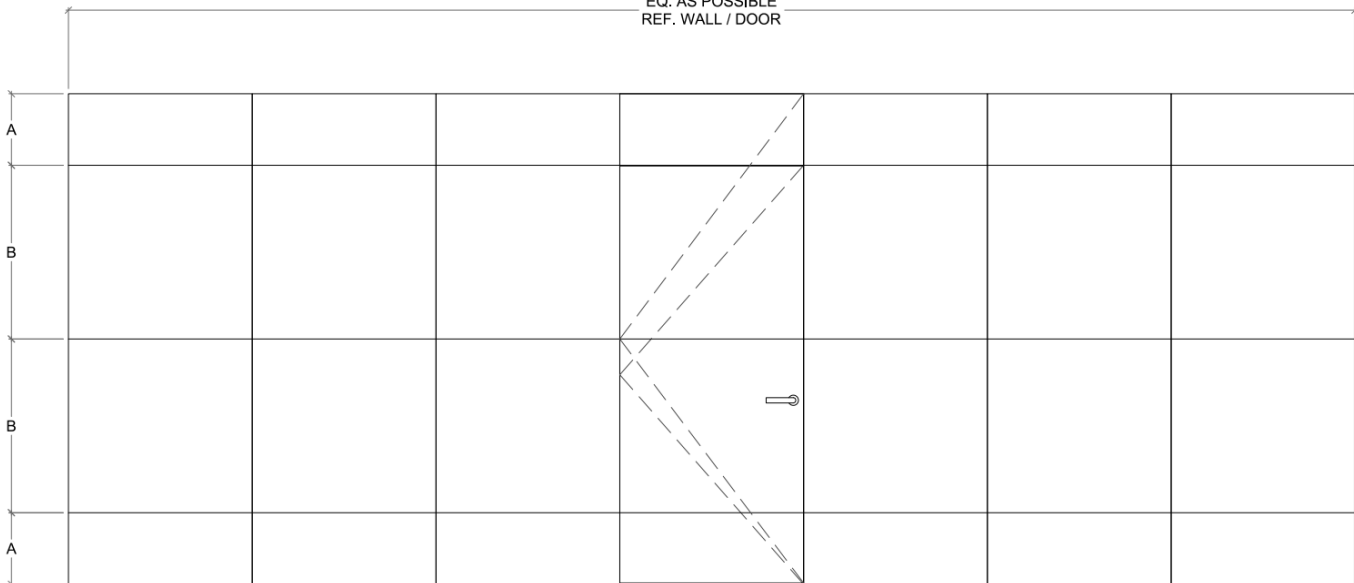
Door Height

EQ. AS POSSIBLE
REF. WALL / DOOR



Split Height

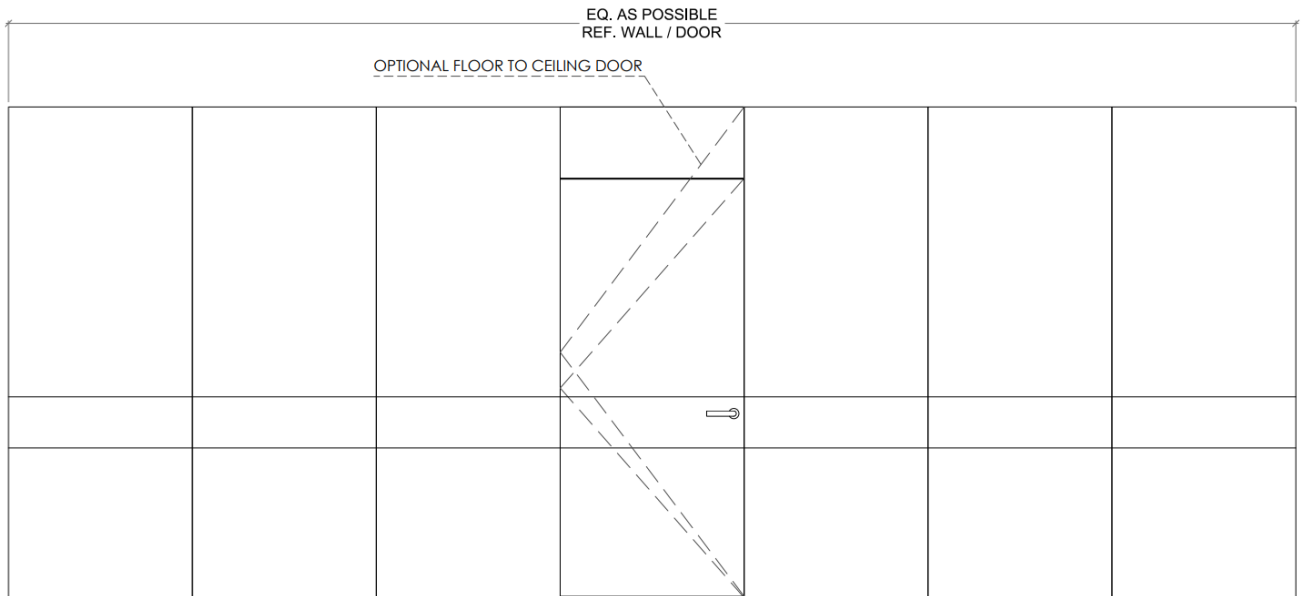
EQ. AS POSSIBLE
REF. WALL / DOOR



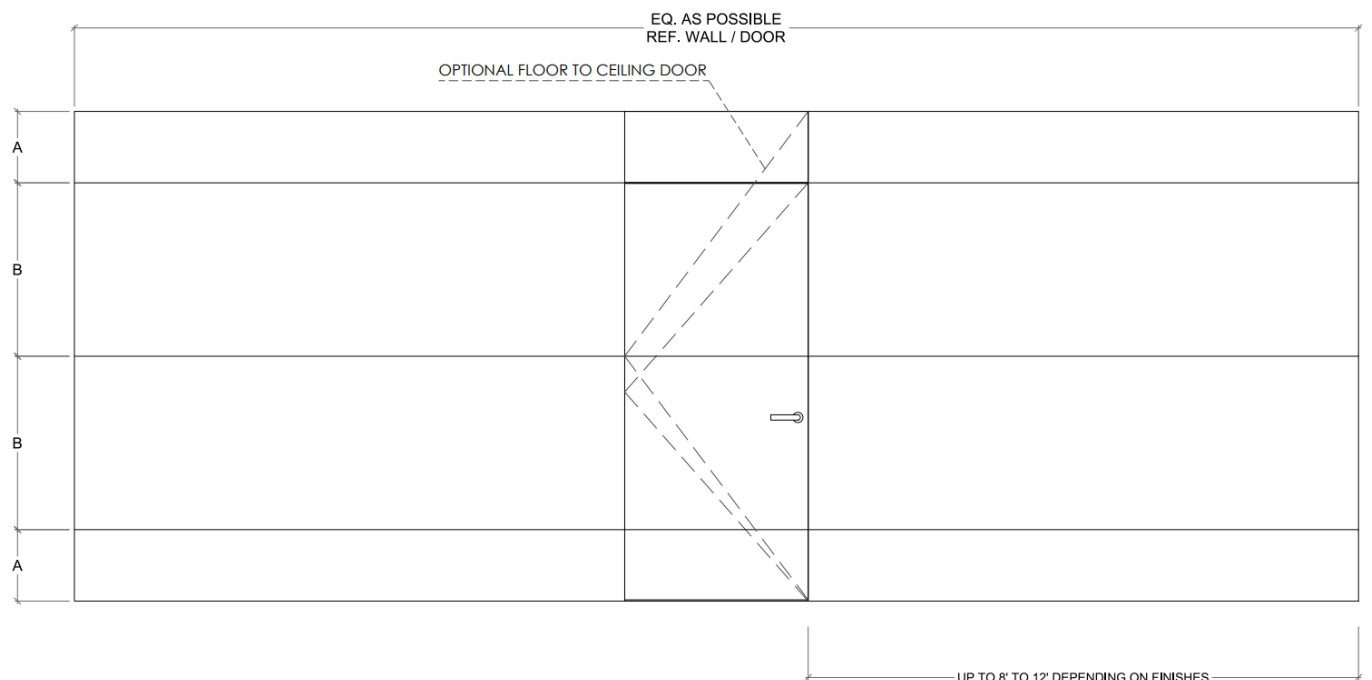
PLEASE ACCOUNT FOR FINISHED FLOOR FOR ALL MEASUREMENTS GIVEN TO DAYORIS.

Panel Layout Options

Hardware Highlight



Blocks II



PLEASE ACCOUNT FOR FINISHED FLOOR FOR ALL MEASUREMENTS GIVEN TO DAYORIS.