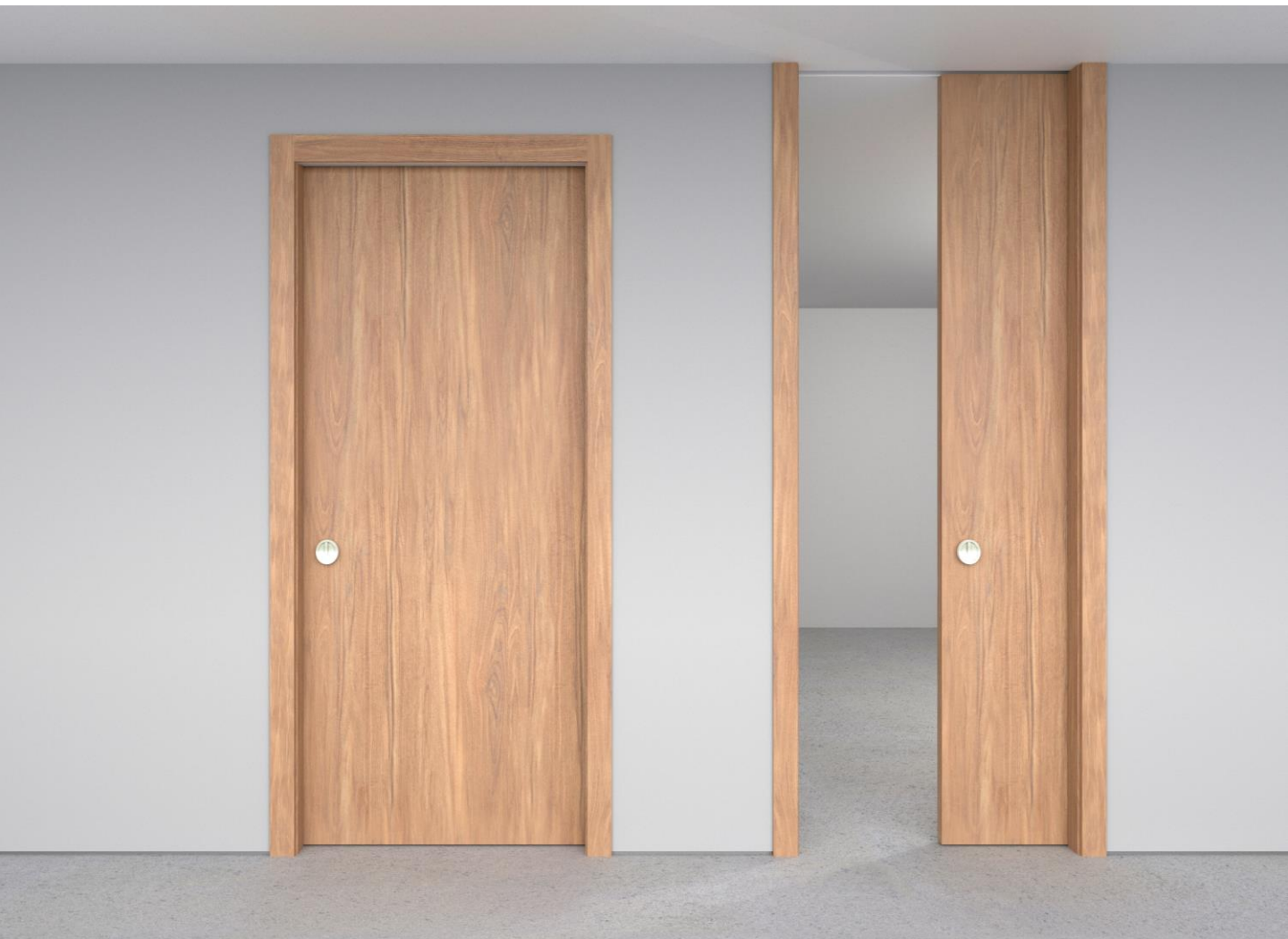


Filo/ with casing

POCKET DOOR



Types of Applications



Finishes

Primed / Laminated Import

Laminated Suncrest / Matte Lacquer

Wood veneer

What's included

Technical Specifications:

Solid Core Door Slab

Finish – Designer's choice

Handset – DAYORIS Italia

Design – Designers Choice

Applications

Standard Application



Floor to Ceiling Application *

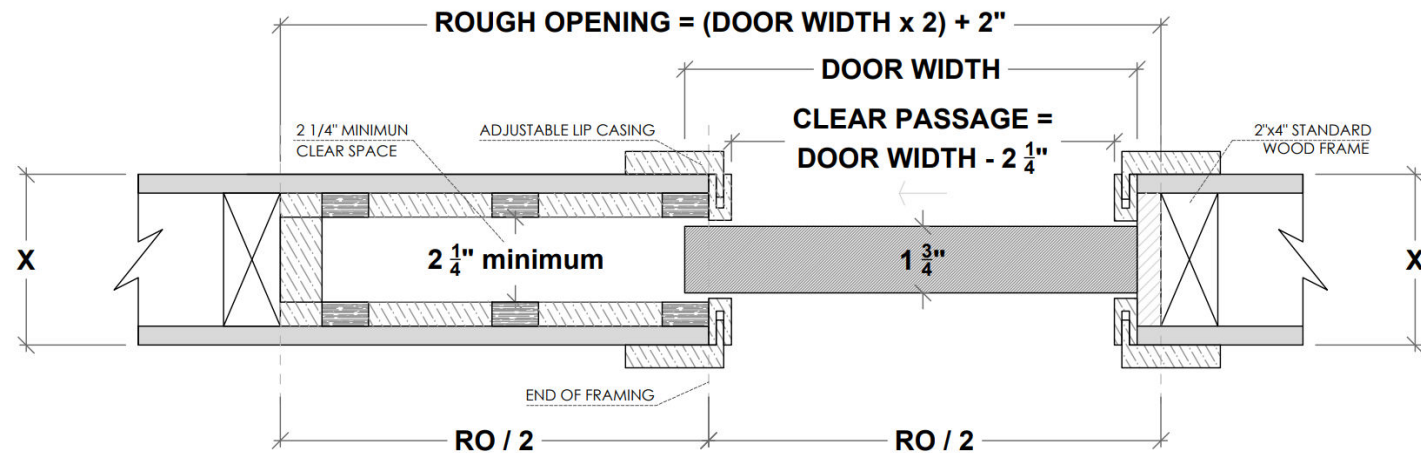


* Optional Upgrade

1. Builders grade Pocket Frame Kit

Limited to Door size up to 3' x 8'

Usually provided by others, available from Dayoris as an optional upgrade. (for optimal use, Dayoris recommend option 2, framing with 2x6).



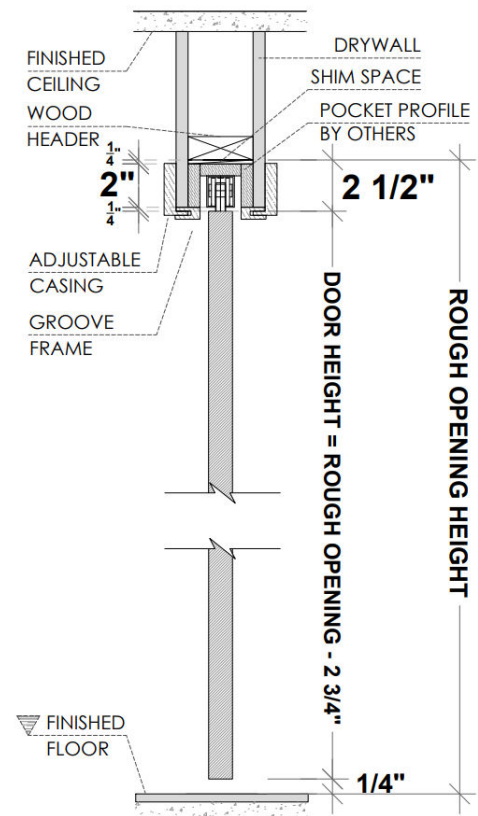
X = THE WALL CAN BE ANY THICKNESS
ALL OPENINGS MUST HAVE WOOD SUPPORT (2 x 4, 2 x 6, 2 x 8, ...)

1.a Standard Application with Builders Pocket Frame

HAFELE Track

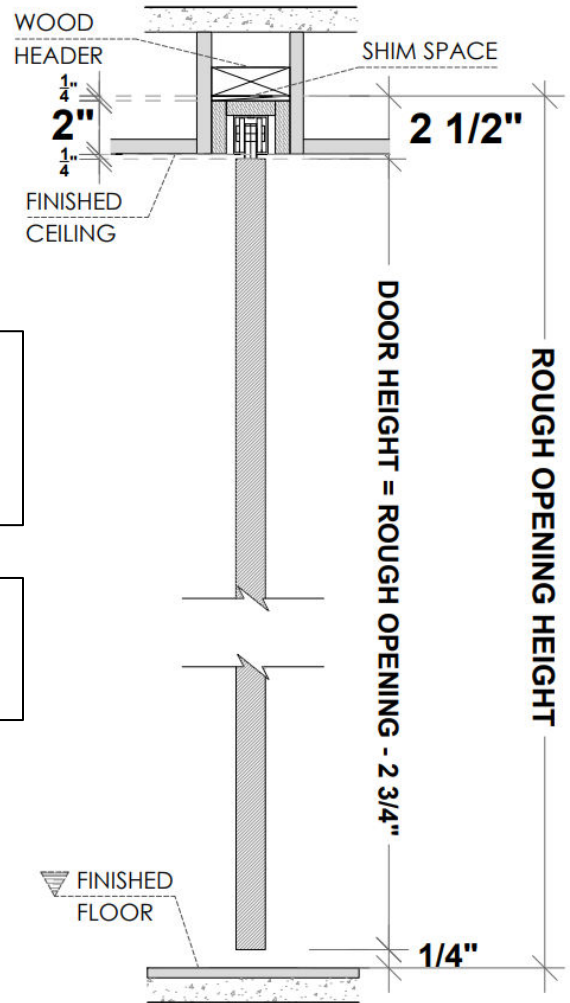
RO = DH (Door Height) + 2 3/4"

(from Finished Floor)



PLEASE ACCOUNT FOR FINISHED FLOOR FOR ALL MEASUREMENTS GIVEN TO DAYORIS

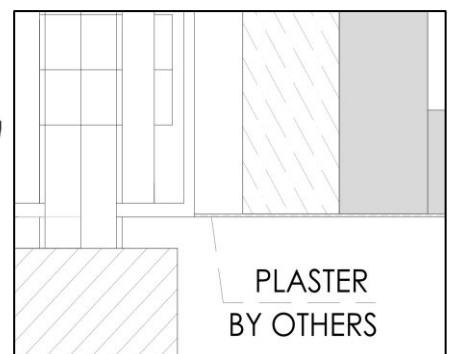
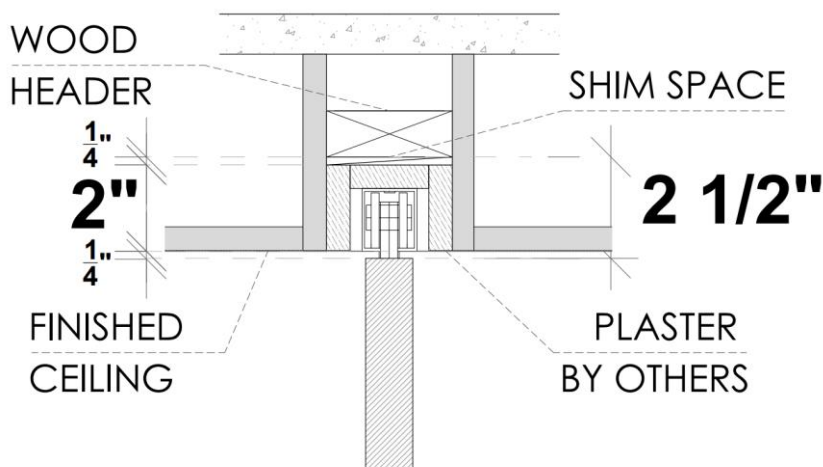
1.b Floor to Ceiling Application with Builders Pocket Frame Kit



HAFELE Track
 $RO = DH \text{ (Door Height)} + 2 \frac{3}{4}"$
 (from Finished Floor)

$DH \text{ (Door Height)} =$
 Finished Floor to Finished Ceiling - $\frac{1}{2}"$

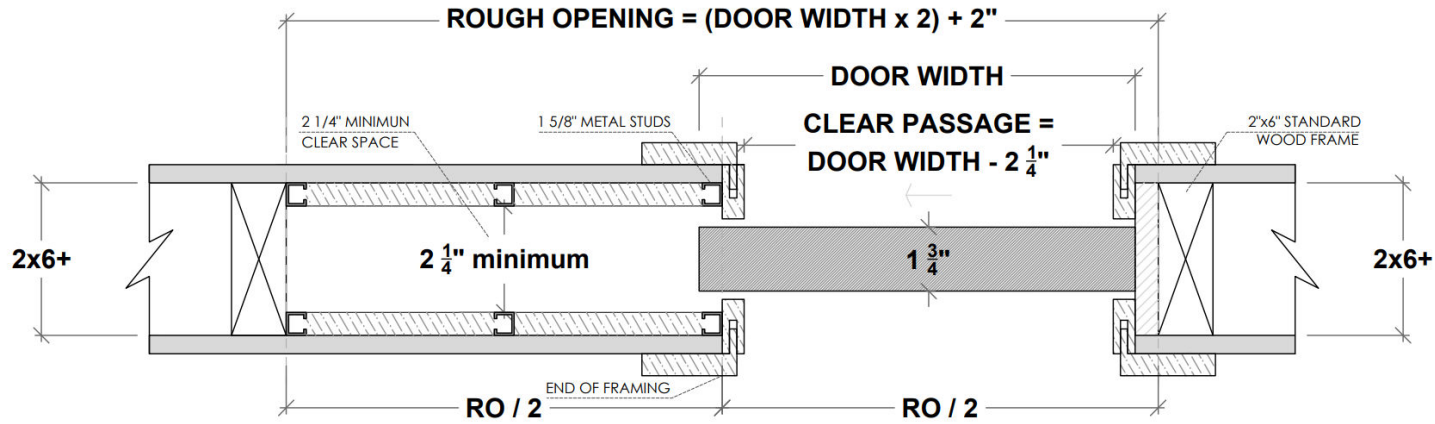
Support at $2 \frac{1}{4}"$ above finished ceiling



PLEASE ACCOUNT FOR FINISHED FLOOR FOR ALL MEASUREMENTS GIVEN TO DAYORIS

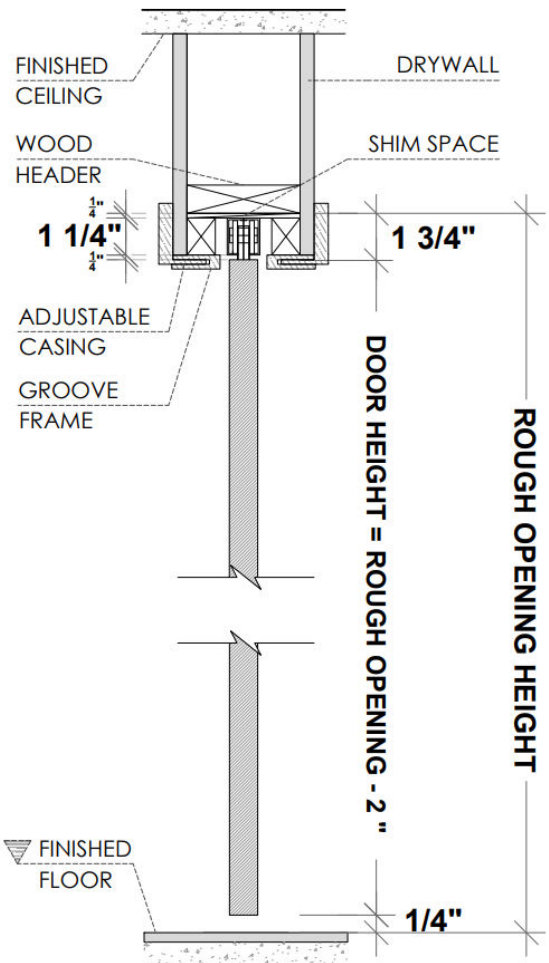
2. Pocket Frame with 2x6 and 1 5/8" Studs Structure (by others)

Recommended Application



ALL OPENINGS MUST HAVE WOOD SUPPORT (2x6)

2.a Standard Application with 2x6 Frame and 1 5/8" Studs

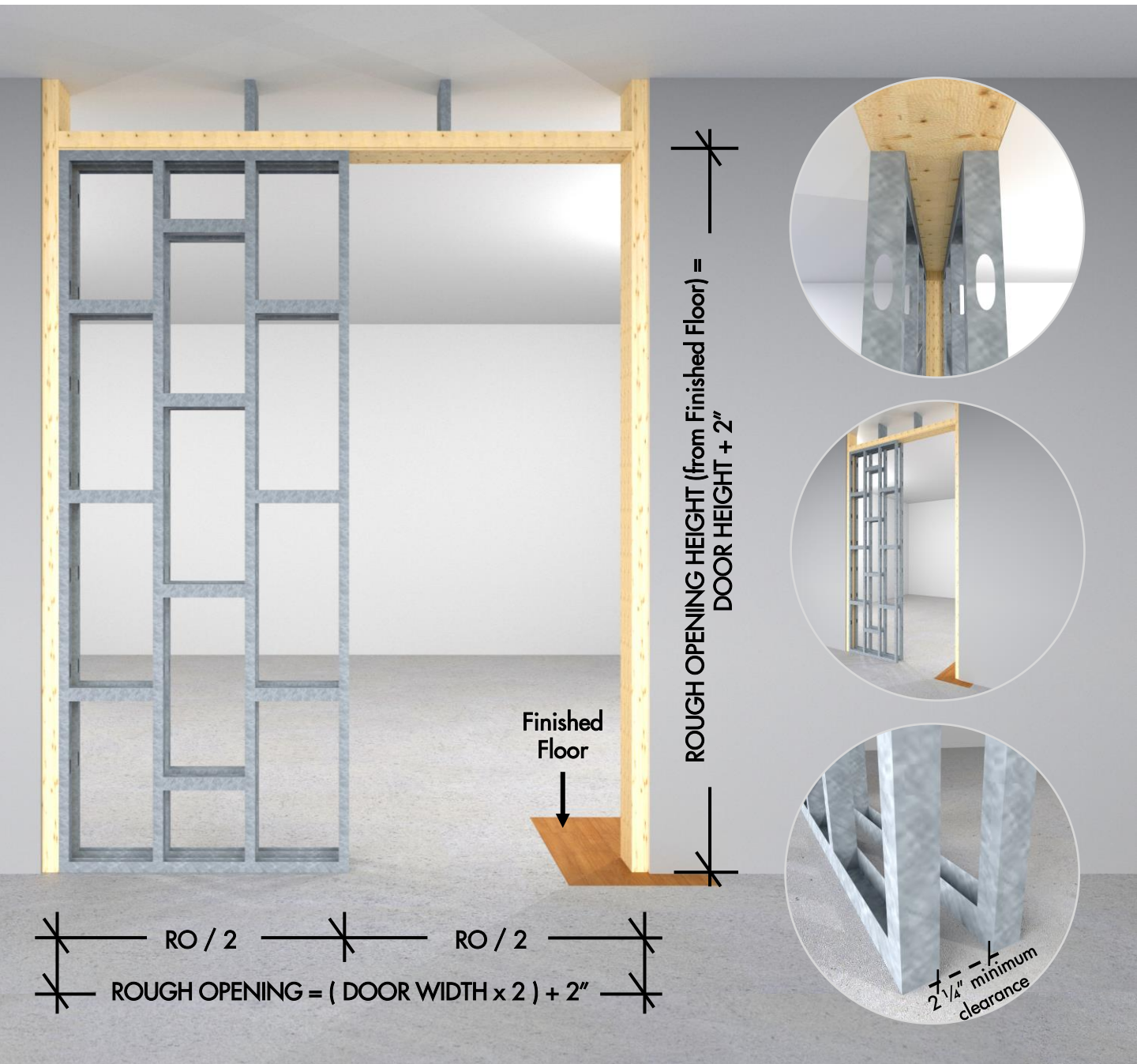


HAFELE Track
RO = DH (Door Height) + 2"
 (from Finished Floor)

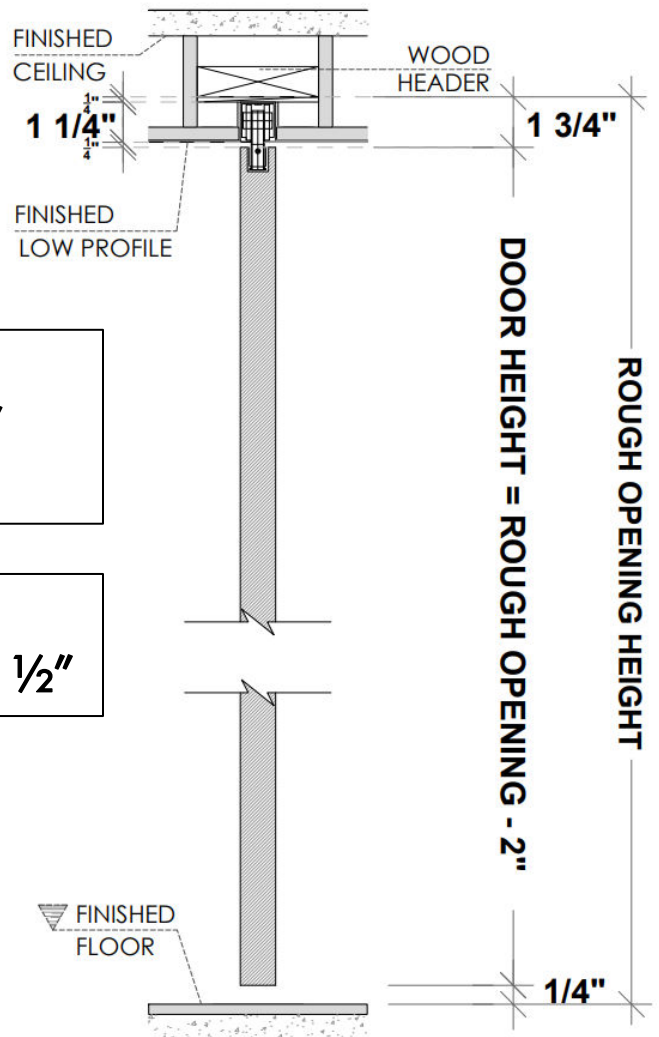
PLEASE ACCOUNT FOR FINISHED FLOOR FOR ALL MEASUREMENTS GIVEN TO DAYORIS

Filo/ pocket door

1. Pocket Frame with 2x6 and 1 5/8" Studs Structure (by others)



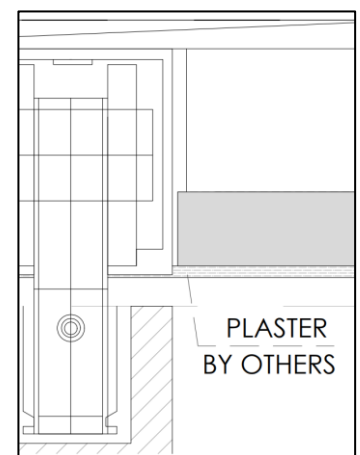
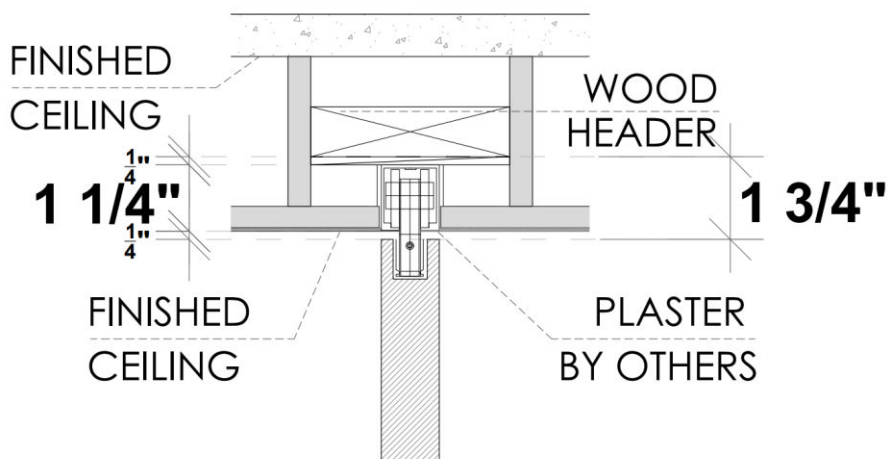
2.b Floor to Ceiling Application with 2x6 and 1 5/8" Studs



HAFELE Track
 $RO = DH \text{ (Door Height)} + 2''$
 (from Finished Floor)

$DH \text{ (Door Height)} =$
 Finished Floor to Finished Ceiling - $\frac{1}{2}''$

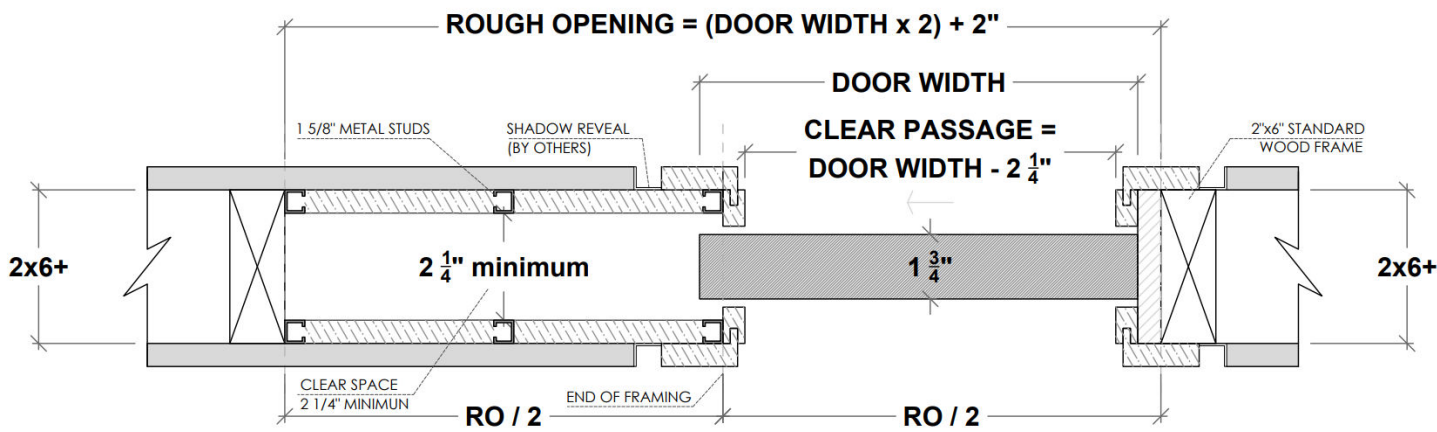
Support at 1 1/2" above finished ceiling



PLEASE ACCOUNT FOR FINISHED FLOOR FOR ALL MEASUREMENTS GIVEN TO DAYORIS

3. Pocket Frame with 2x6 and 1 5/8" Studs Structure with Shadow Reveal (by others)

Recommended Application



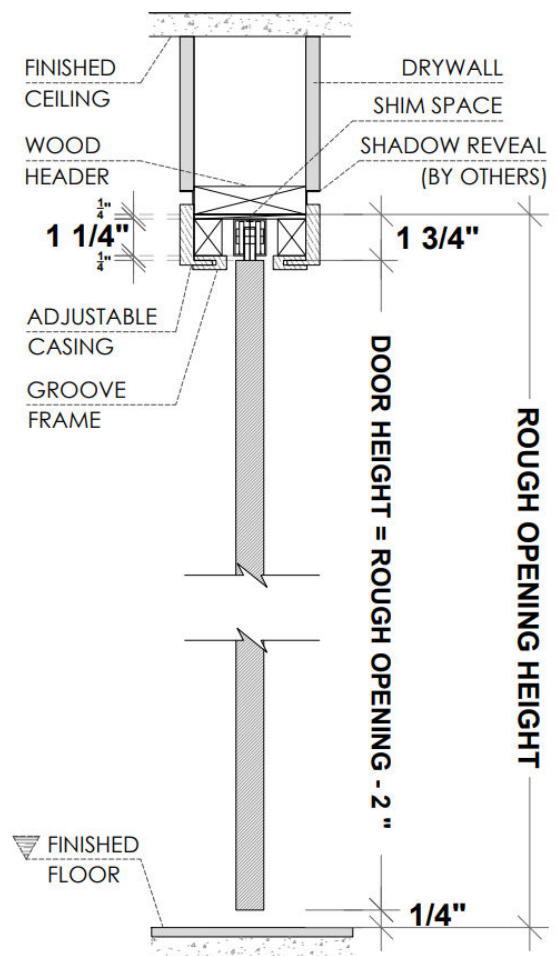
ALL OPENINGS MUST HAVE WOOD SUPPORT (2x6)

2.a Standard Application with 2x6 Frame and 1 5/8" Studs

HAFELE Track

RO = DH (Door Height) + 2"

(from Finished Floor)



PLEASE ACCOUNT FOR FINISHED FLOOR FOR ALL MEASUREMENTS GIVEN TO DAYORIS

Hardware

Pocket and Sliding Door Hardware

Satin



Polished



Black

