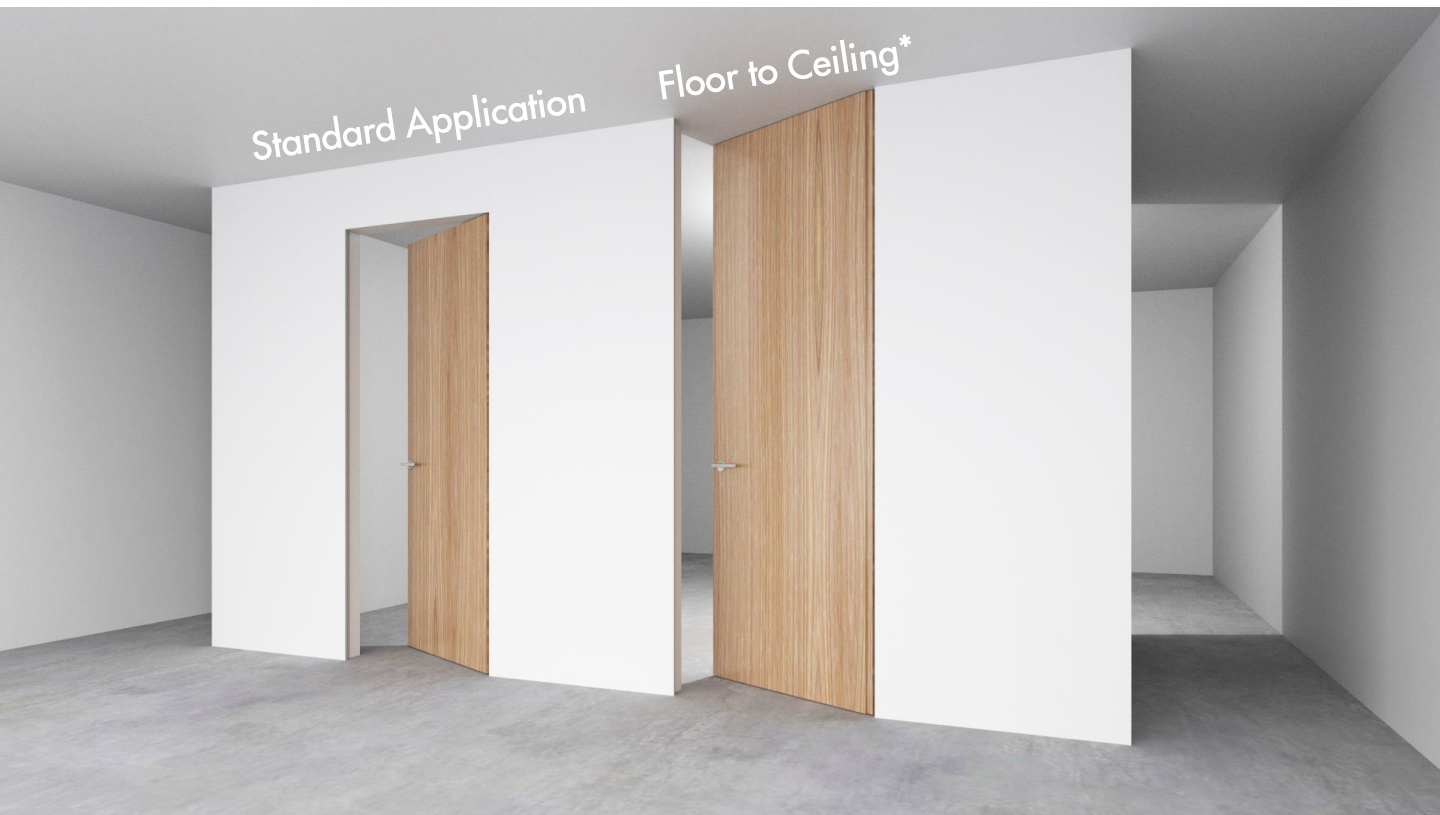


Filo muro/ frameless, flush to the wall

SWING DOOR



Types of Applications

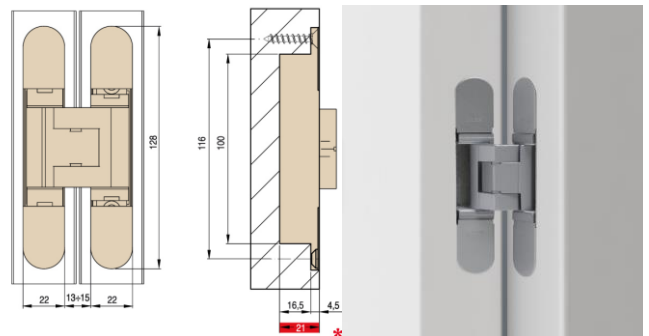


Finishes

Primed / Laminated Import

Laminated Suncrest / Matte Lacquer

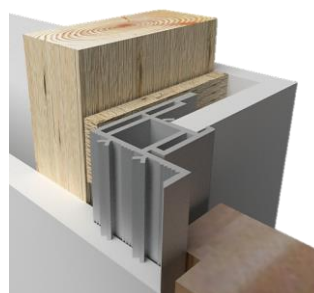
Wood veneer



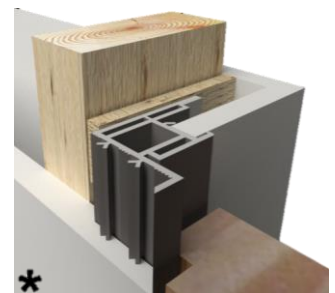
What's included

Technical Specifications:
 Solid Core Door Slab
 Finish – Designer's choice
 Hinges – CEAM Italia 3D adjustable
 Frame – Concealed aluminum
 Handset – DAYORIS Italia
 Mortise – Bonaiti Magnetic
 Design – Designers Choice

Frame Profile Finishes



Clear Aluminum Frame

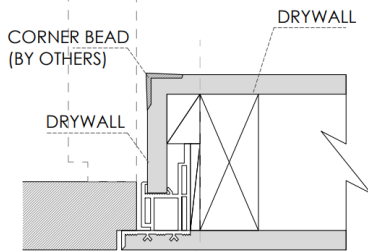


* Black Aluminum Frame

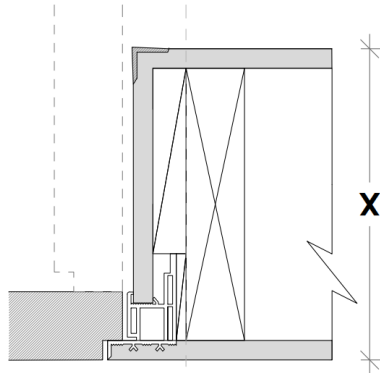
* Optional Upgrades

Benefits of Filo muro/ frameless, flush to the wall

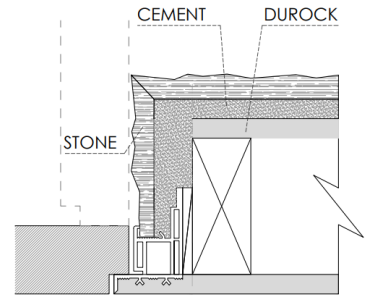
Drywall Return



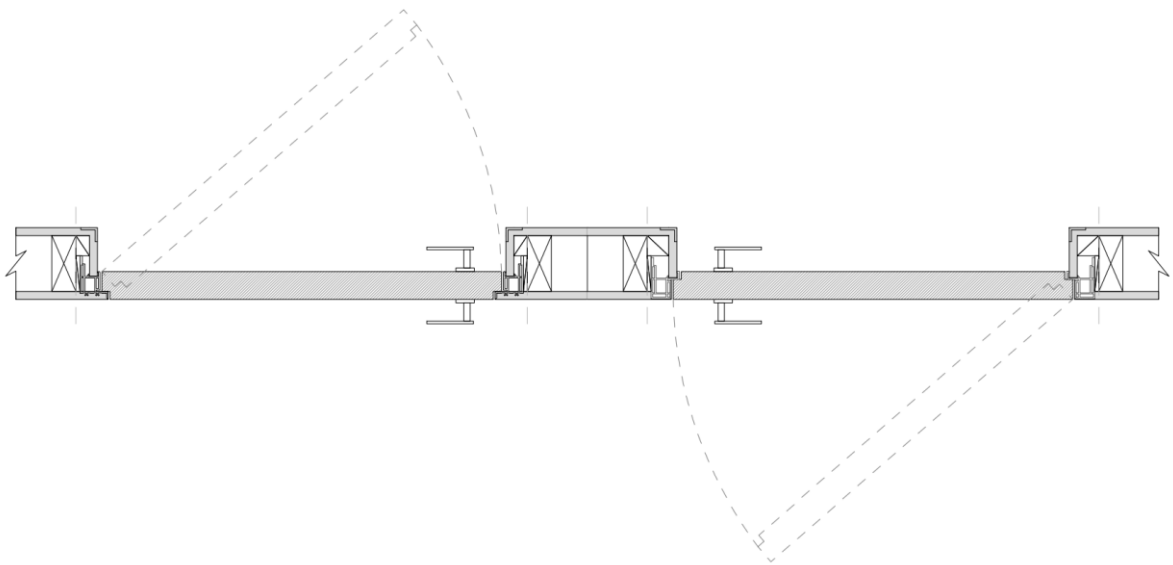
Any Wall Thickness



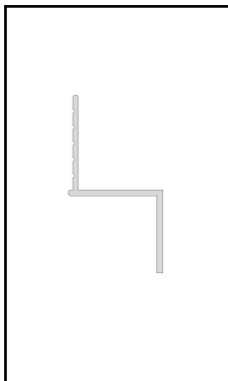
Stone Application on Jamb Return



Always flush on the outside of the wall regardless of the door swing.



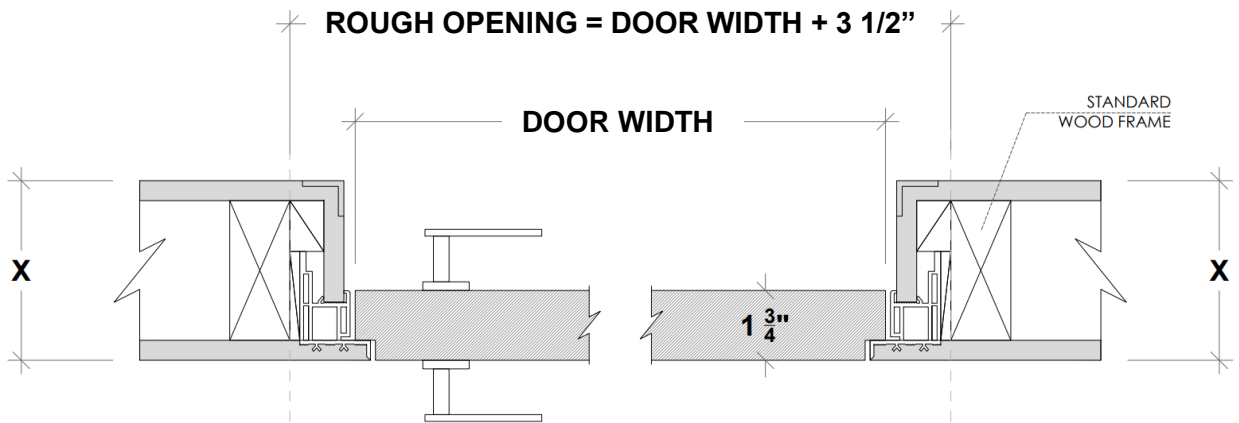
Works with 1/2" depth reglet (any height). Can be used with 5/8" drywall.



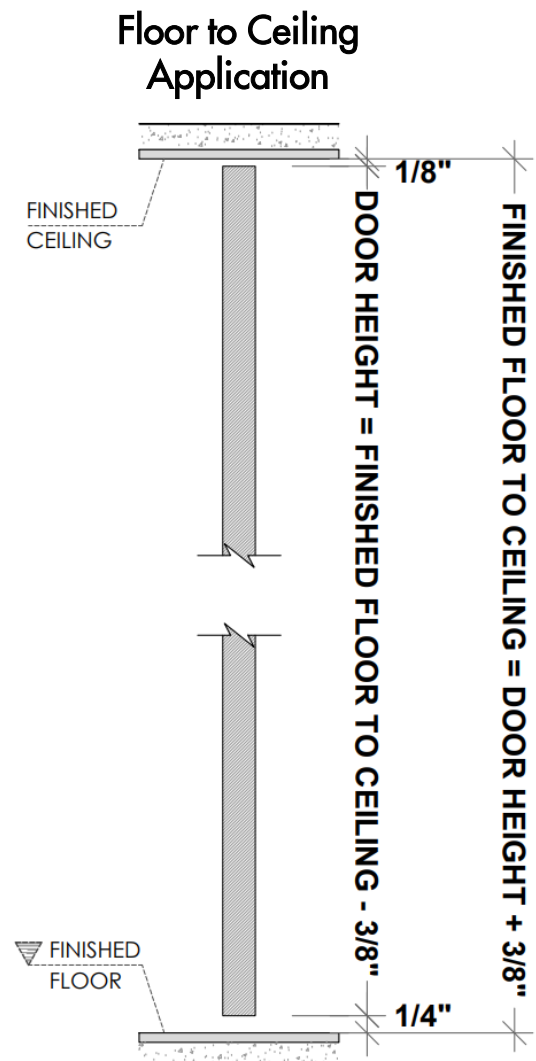
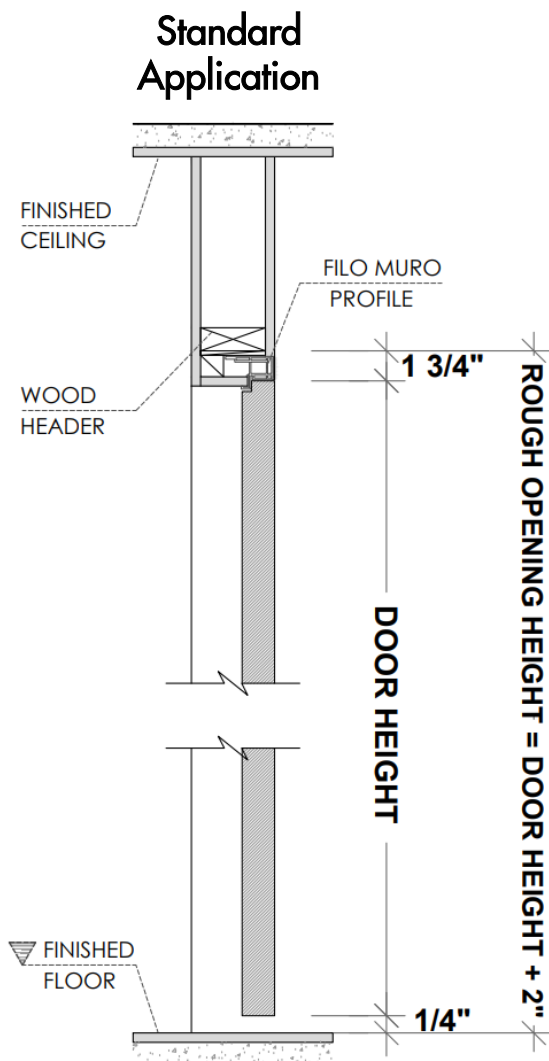
DEPTH	WIDTH	NON-VENTED
1/2"	1/8"	DRMZ-25-125
1/2"	1/4"	DRMZ-50-25
1/2"	3/8"	DRMZ-50-375
1/2"	1/2"	DRMZ-50-50
1/2"	5/8"	DRMZ-50-625
1/2"	3/4"	DRMZ-50-75
1/2"	1"	DRMZ-50-100
1/2"	1 1/2"	DRMZ-50-150
1/2"	2"	DRMZ-50-200

* Fry reglet for reference purposes only, not provided by Dayoris.

Framing Instructions Filo muro/ frameless, flush to the wall



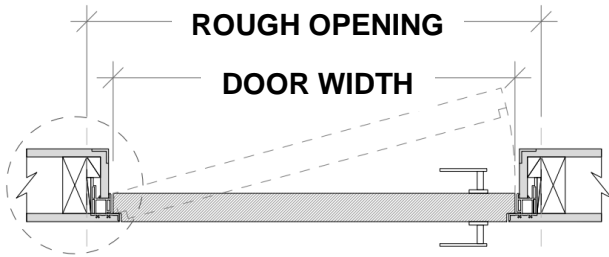
X = THE WALL CAN BE ANY THICKNESS
ALL OPENINGS MUST HAVE WOOD SUPPORT (2" x 4", 2" x 6", 2" x 8", ...)



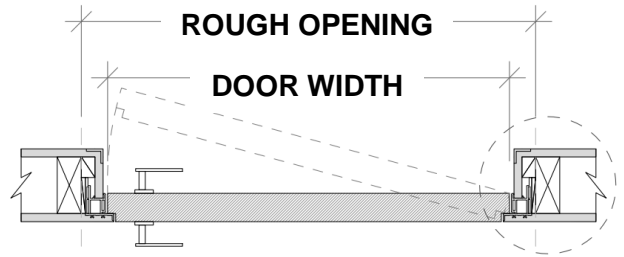
PLEASE ACCOUNT FOR FINISHED FLOOR FOR ALL MEASUREMENTS GIVEN TO DAYORIS.

Inswing Application

Left Hand Inswing



Right Hand Inswing



CORNER BEAD
(BY OTHERS)

SHIM SPACE

DRYWALL AND PLASTER
(BY OTHERS)

DAYORIS
DOOR SLAB

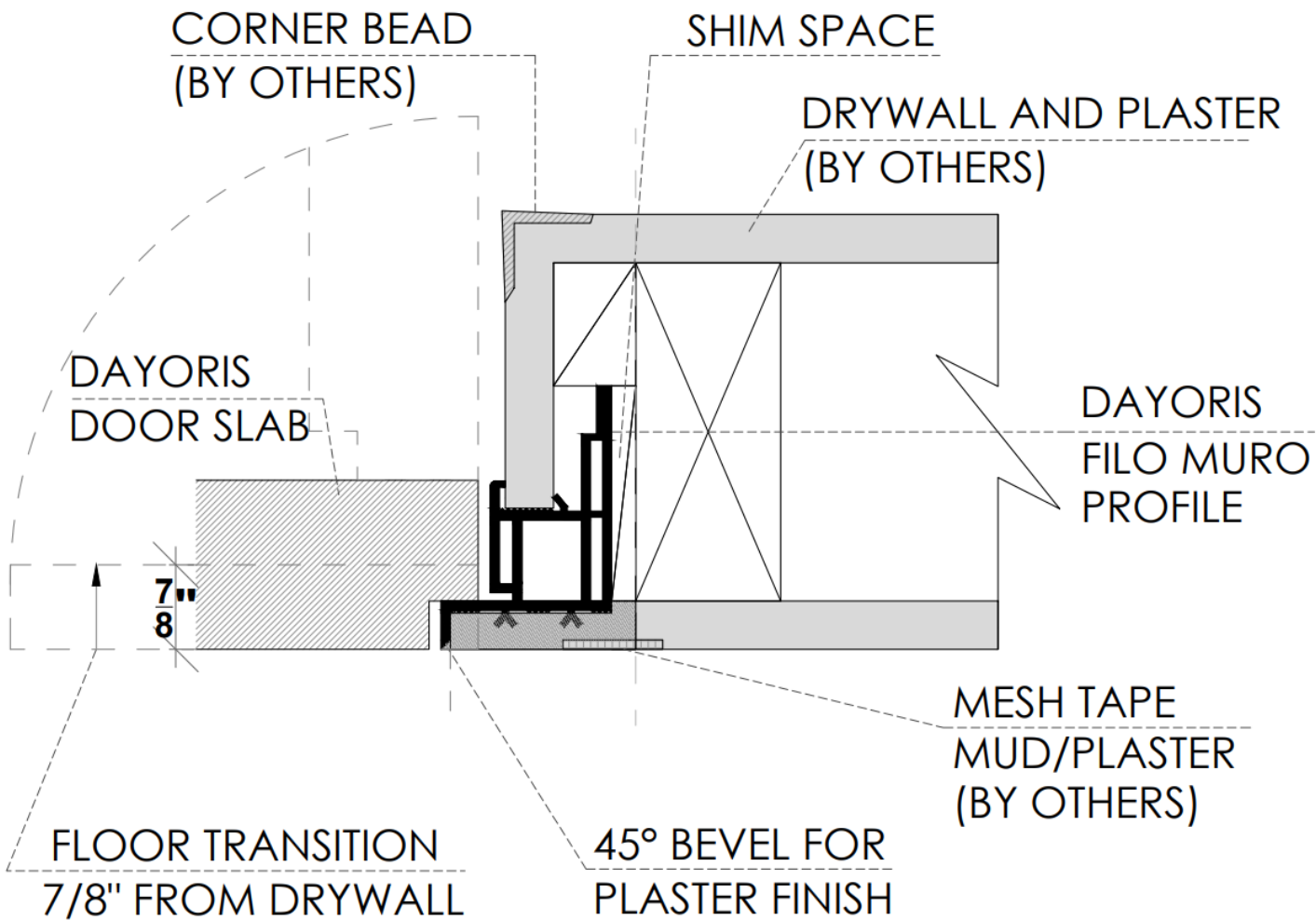
DAYORIS
FILO MURO
PROFILE

7"
8

FLOOR TRANSITION
7/8" FROM DRYWALL

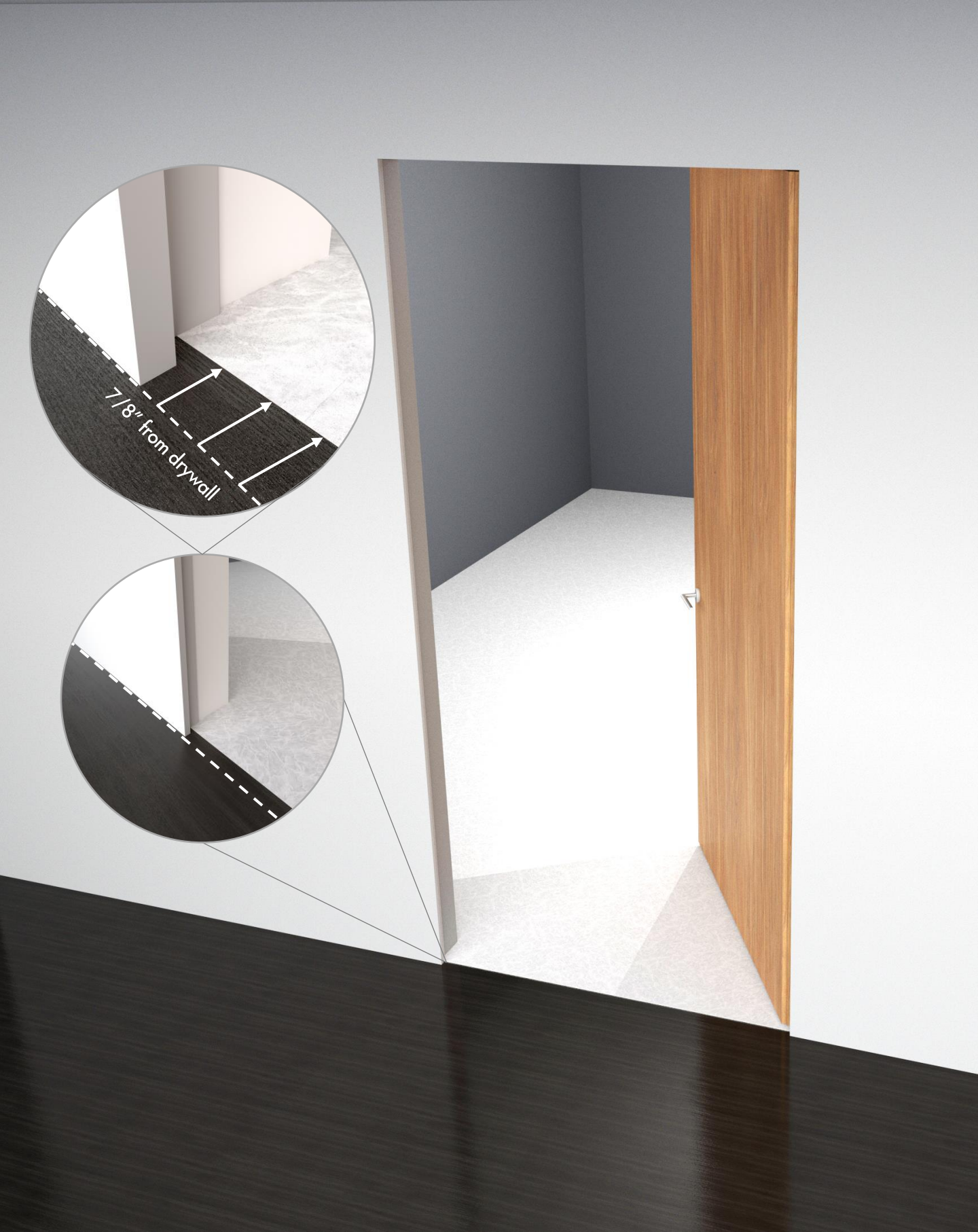
45° BEVEL FOR
PLASTER FINISH

MESH TAPE
MUD/PLASTER
(BY OTHERS)



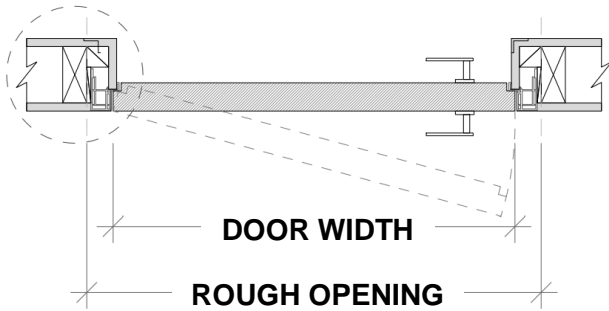
Floor Transition Detail

Filo muro/ inswing floor transition 7/8" from drywall

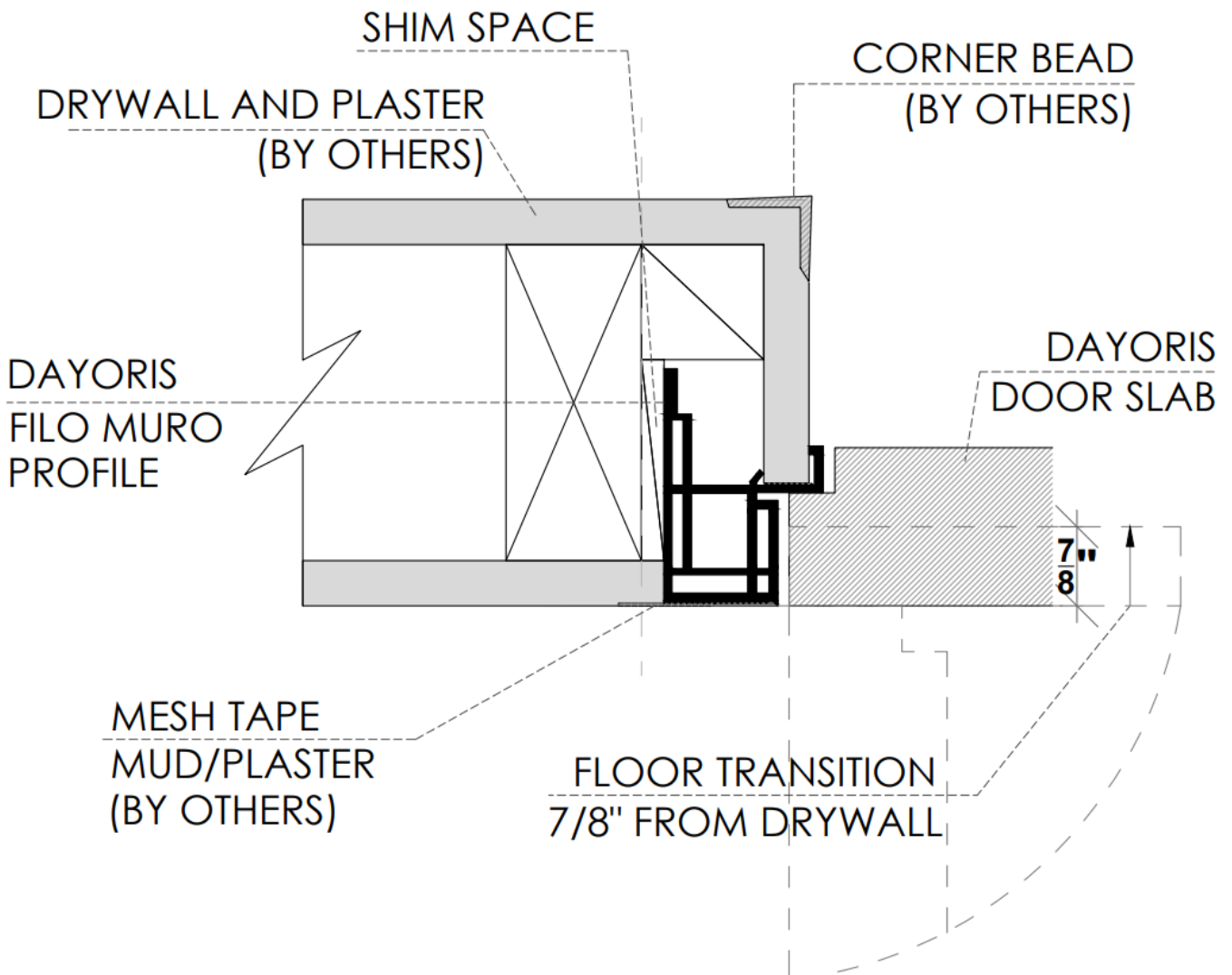
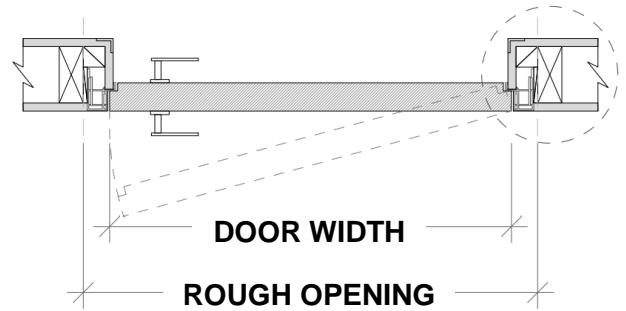


Outswing Application

Right Hand Outswing

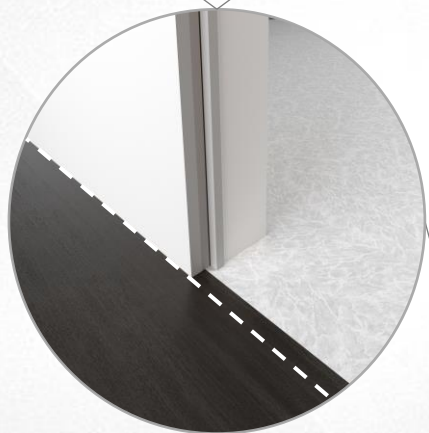
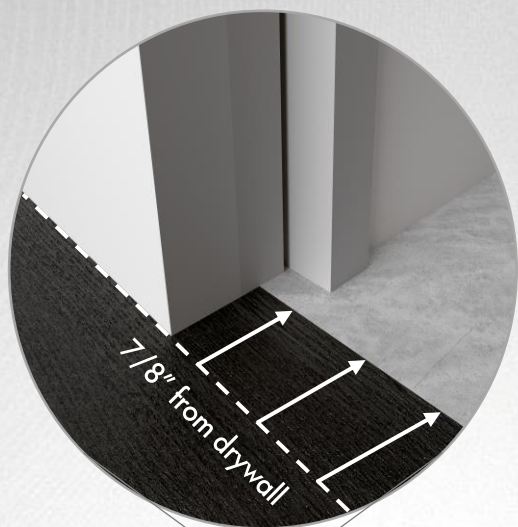


Left Hand Outswing



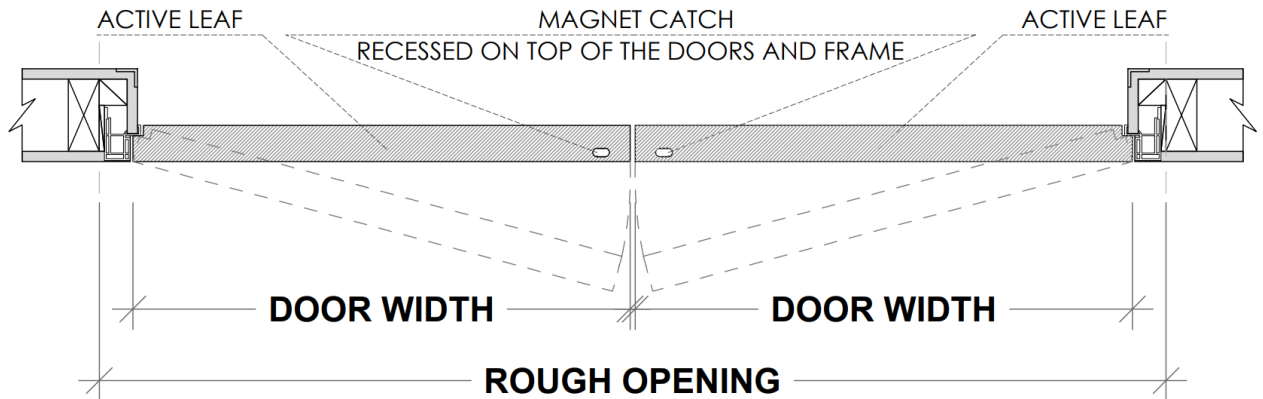
Floor Transition Detail

Filo muro/ outswing floor transition $7/8"$ from drywall



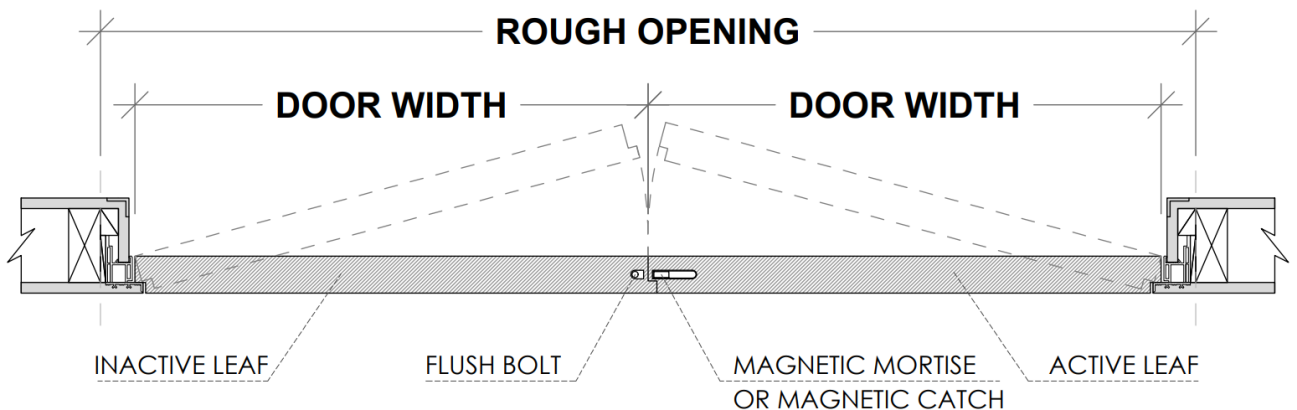
Double Door Applications

Double Dummy Application with top magnetic catch (both active)



$$\text{ROUGH OPENING} = (\text{DOOR WIDTH} \times 2) + 3 \frac{1}{2}"$$

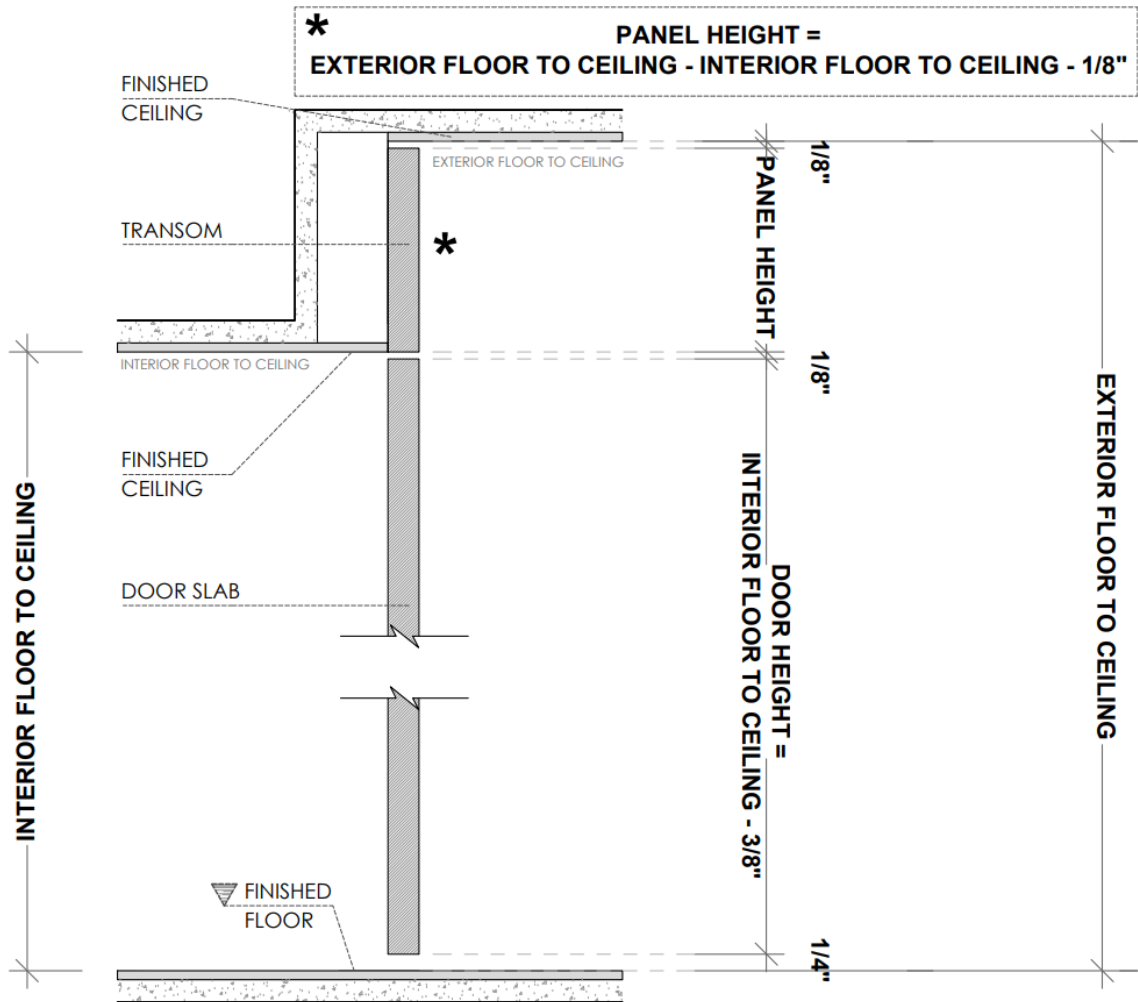
Active / Inactive Door with flush bolts



RHA (RIGHT HAND ACTIVE) SHOWN

$$\text{ROUGH OPENING} = (\text{DOOR WIDTH} \times 2) + 3 \frac{1}{2}"$$

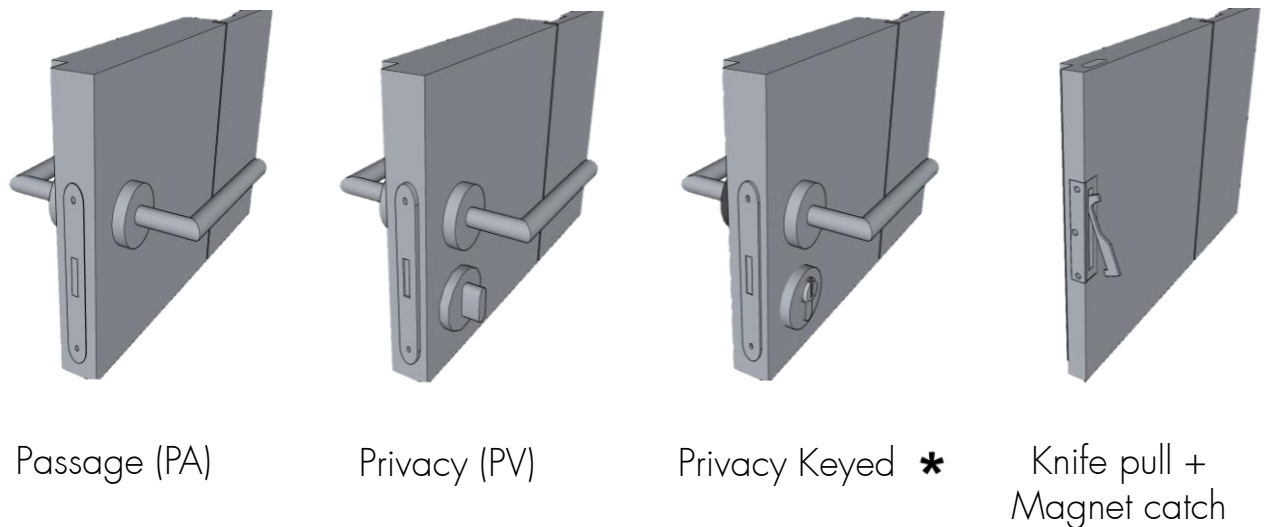
Filo muro with Transom Application



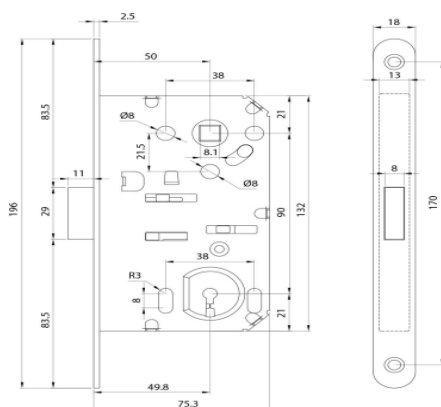
Hardware



Lock Types for Swing Doors



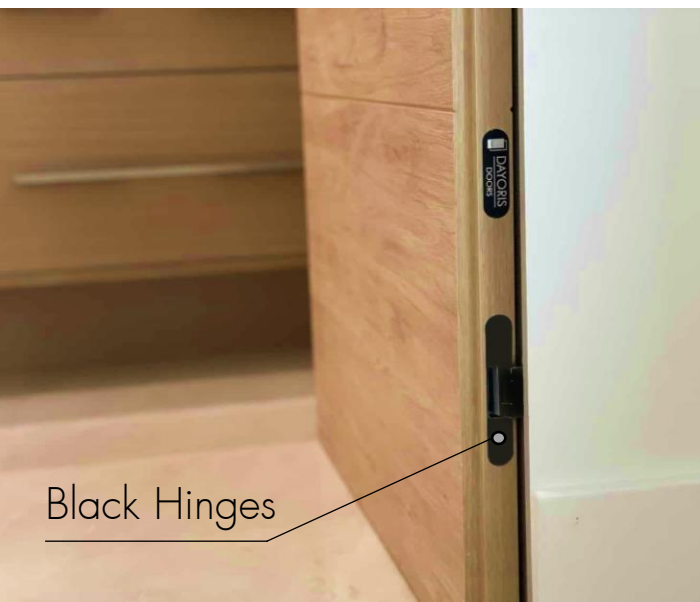
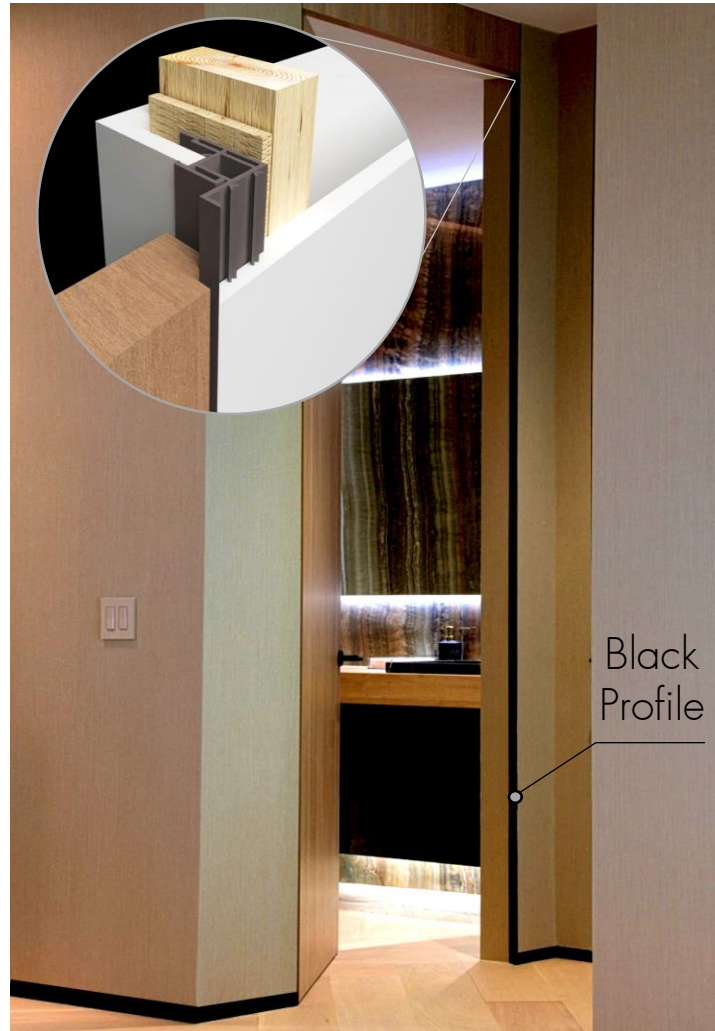
Bonaiti Magnetic Lock



* Optional Upgrades

Dayoris Black Package (optional upgrade)

- Black Hinges
- Black Aluminum Profile
- Black Mortise Lock and Handle



Filo muro/ frameless, flush to the wall

Installation Instructions

Doors and frames arrive mortised and cut to size.



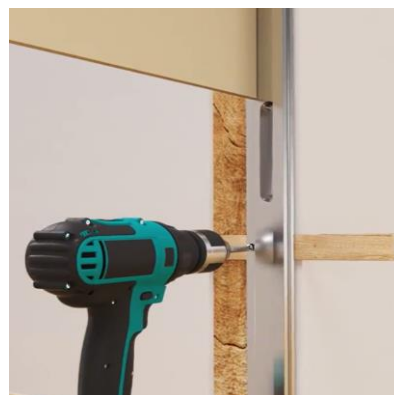
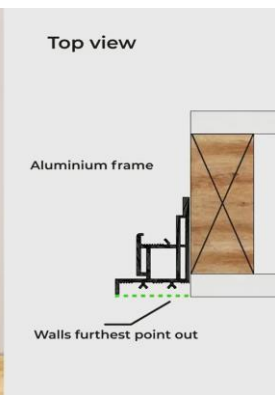
Verify the level of the wall and rough openings

Identify the furthest point out of level of the wall. (This is where the door is installed).



Installing the aluminum frame

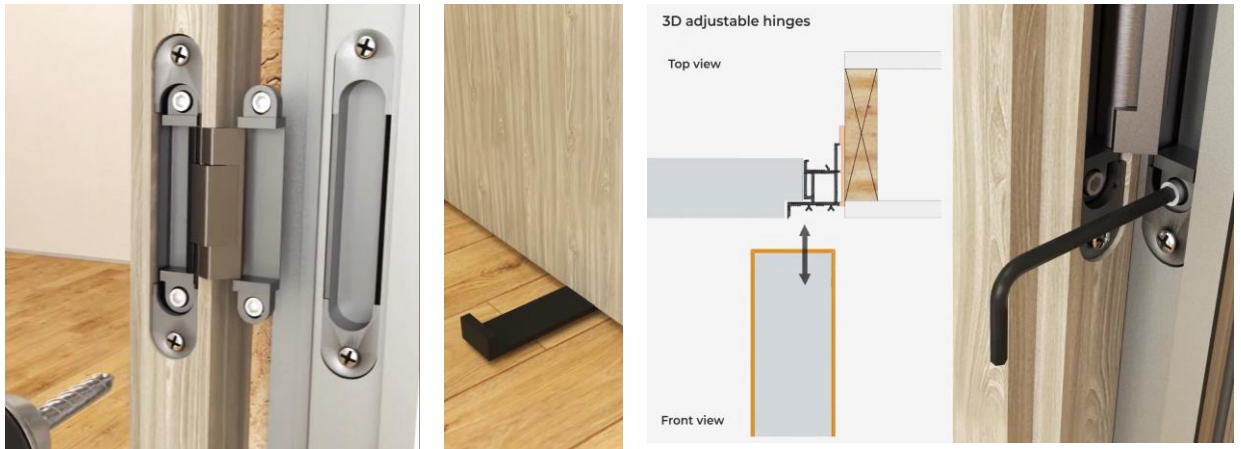
Place and screw wood shims leveling the aluminum frame inside 2'x4' rough, then remove frame stabilizers.



Filo muro/ frameless, flush to the wall

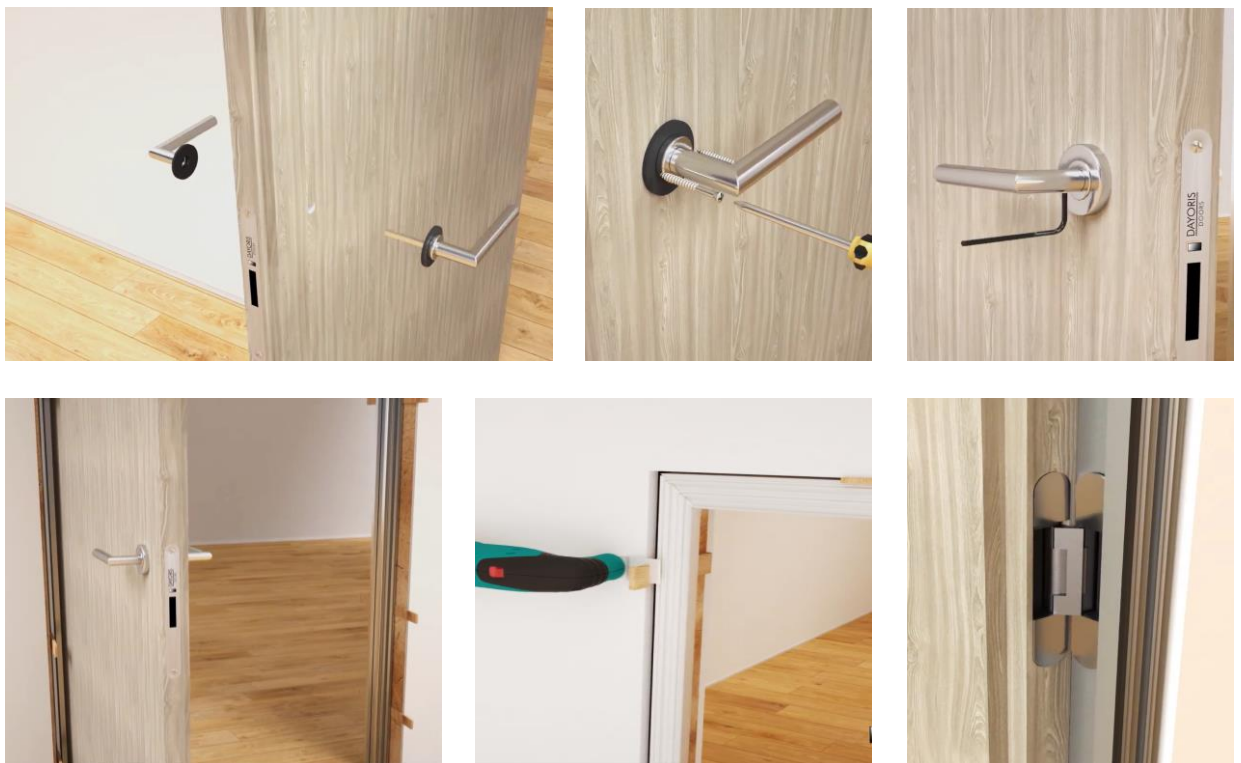
Hinge installation

Fit and screw hinges into the frame and door, then connect and screw hinges together while hanging door inside the aluminum frame. Use hinge adjustment screws to center door inside of the aluminum frame.



Handle installation

Screw handles into the mortised holes of the door and install rosettes. Proceed to cut the wood shims around the frame.



Suggested finishing instructions, finish by others

Filo muro/ Swing doors, Finishing instructions

1. Apply mesh tape covering the transition area between the wall stud and Dayoris door frame.



Suggested finishing instructions, finish by others

Filo muro/ Swing doors, Finishing instructions

2. Apply 2 to 3 thin plaster coats over mesh tape covering entire flush side of Dayoris Frame. Plaster finishing should float from edge of aluminum frame to wall in order to create a flush finish appearance.



Suggested finishing instructions, finish by others

Filo muro/ Swing doors, Finishing instructions

3. Rear (non flush) side finishing technique. Insert sheetrock piece on jamb side into open cavity on aluminum frame. This piece should be shimmed in order to create a level 90° angle at the beginning of the wall on the non-flush side. The non-flush side of the wall, and inserted sheetrock jamb piece, needs to be joined with corner bead. This will create a clean edge with a 90° angle.

