

**Filo muro/** frameless

POCKET DOOR



 **DAYORIS**  
DOORS

# Types of Applications



## Finishes

Primed / Laminated Import  
Laminated Suncrest / Matte Lacquer  
Wood veneer

## What's included

Technical Specifications:  
Solid Core Door Slab  
Finish – Designer's choice  
Handset – DAYORIS Italia  
Design – Designers Choice

## Applications

Standard Application



Floor to Ceiling Application \*

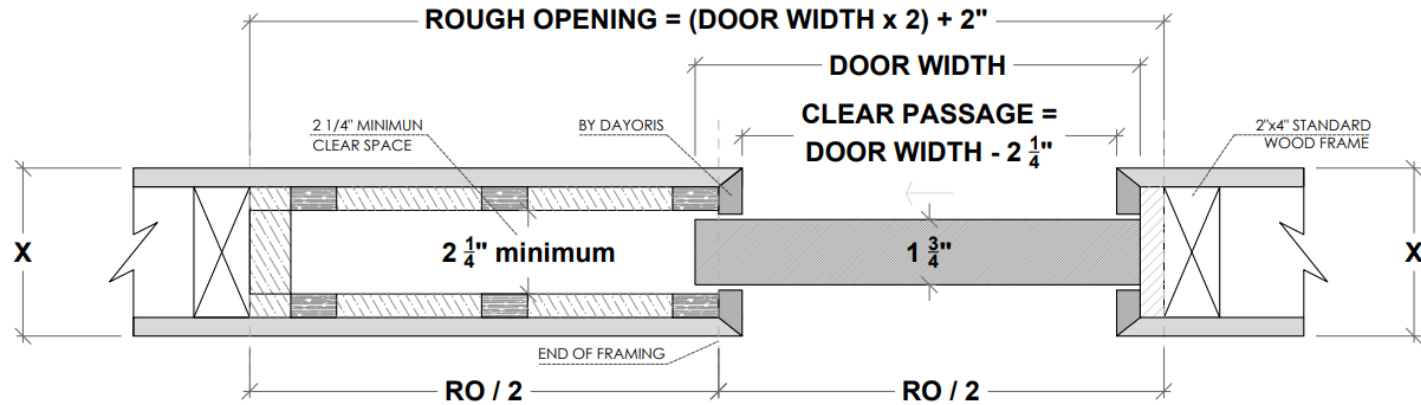


\* Optional Upgrade

# 1. Builders grade Pocket Frame Kit

## Limited to Door size up to 3' x 8'

Usually provided by others, available from Dayoris as an optional upgrade. (for optimal use, Dayoris recommend option 2, framing with 2x6).



X = THE WALL CAN BE ANY THICKNESS

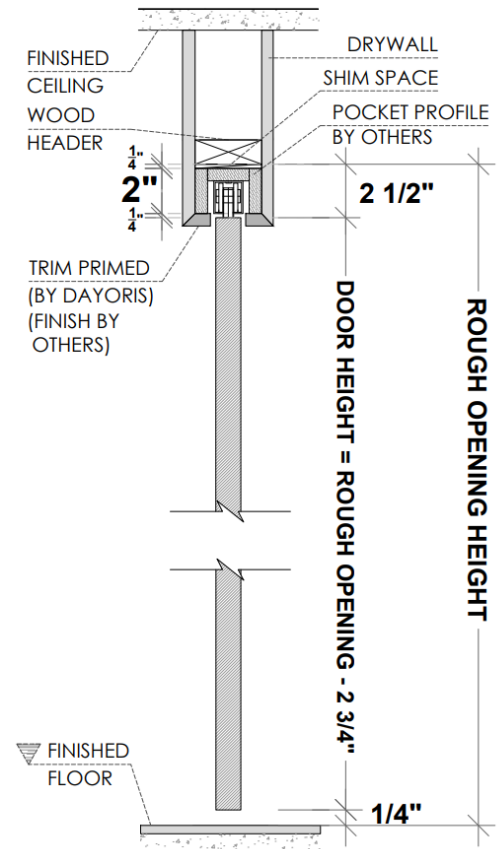
ALL OPENINGS MUST HAVE WOOD SUPPORT ( 2 x 4, 2 x 6, 2 x 8, ... )

## 1.a Standard Application with Builders Pocket Frame

**HAFELE Track**

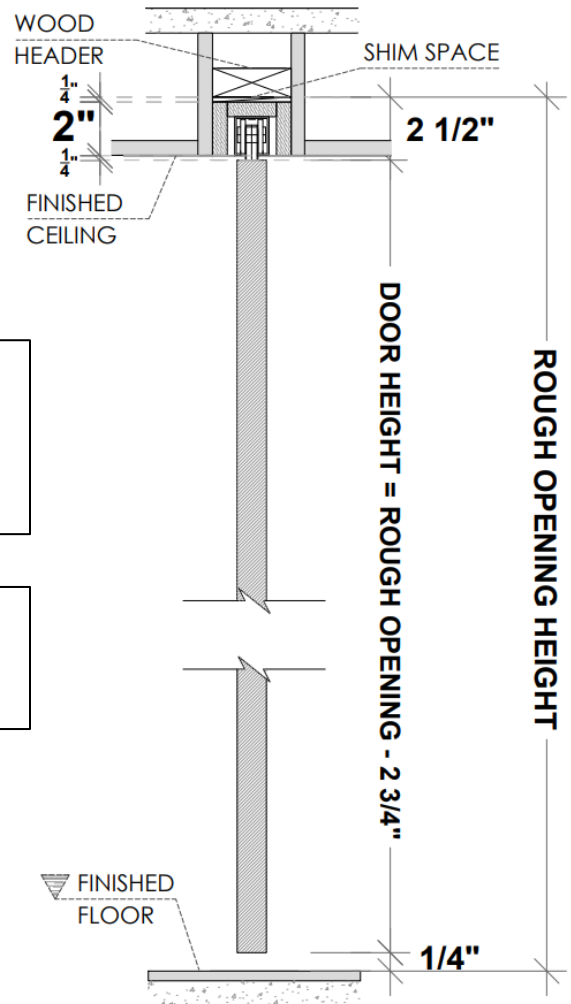
**RO = DH (Door Height) + 2 3/4"**

(from Finished Floor)



PLEASE ACCOUNT FOR FINISHED FLOOR FOR ALL MEASUREMENTS GIVEN TO DAYORIS

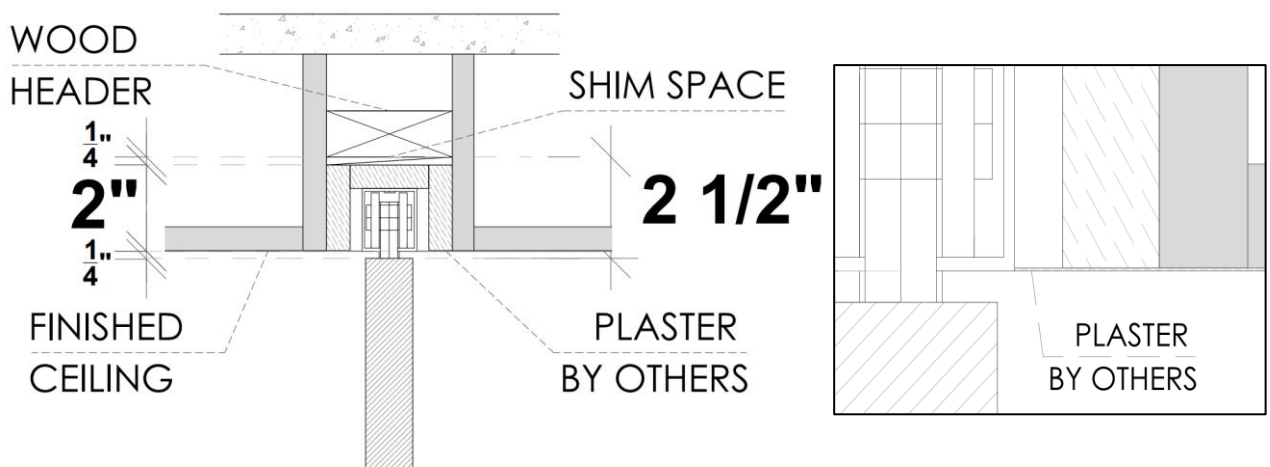
# 1.b Floor to Ceiling Application with Builders Pocket Frame Kit



**HAFELE Track**  
 $RO = DH \text{ (Door Height)} + 2 \frac{3}{4}"$   
 (from Finished Floor)

$DH \text{ (Door Height)} =$   
 Finished Floor to Finished Ceiling -  $\frac{1}{2}"$

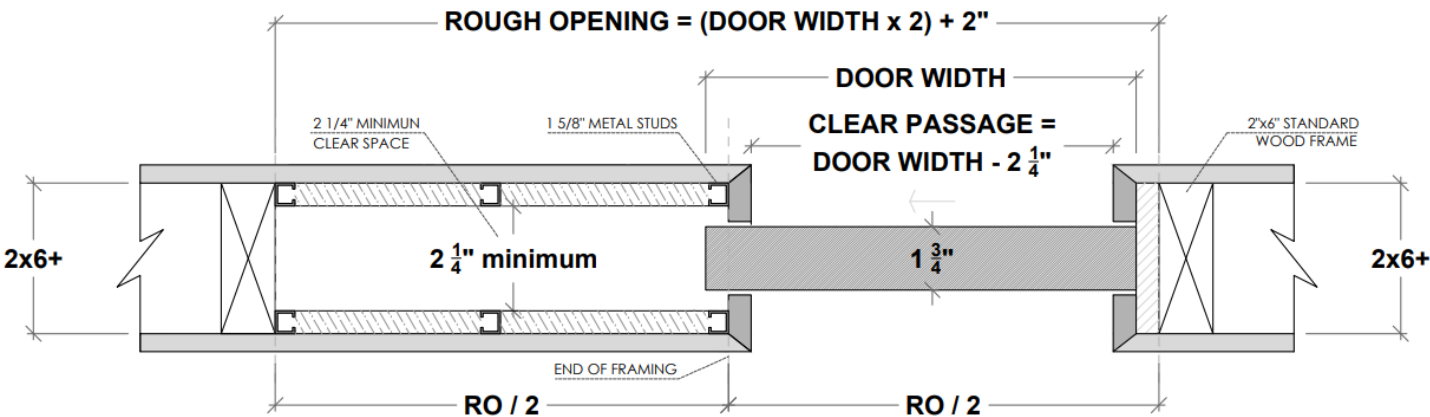
Support at  $2 \frac{1}{4}"$  above finished ceiling



PLEASE ACCOUNT FOR FINISHED FLOOR FOR ALL MEASUREMENTS GIVEN TO DAYORIS

# 2. Pocket Frame with 2x6 and 1 5/8" Studs Structure (by others)

## Recommended Application



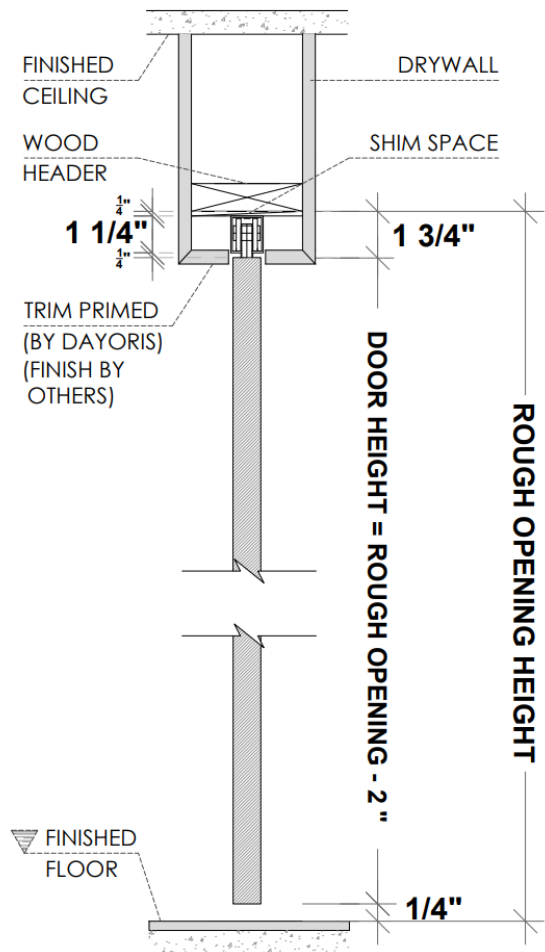
ALL OPENINGS MUST HAVE WOOD SUPPORT ( 2x6)

## 2.a Standard Application with 2x6 Frame and 1 5/8" Studs

**HAFELE Track**

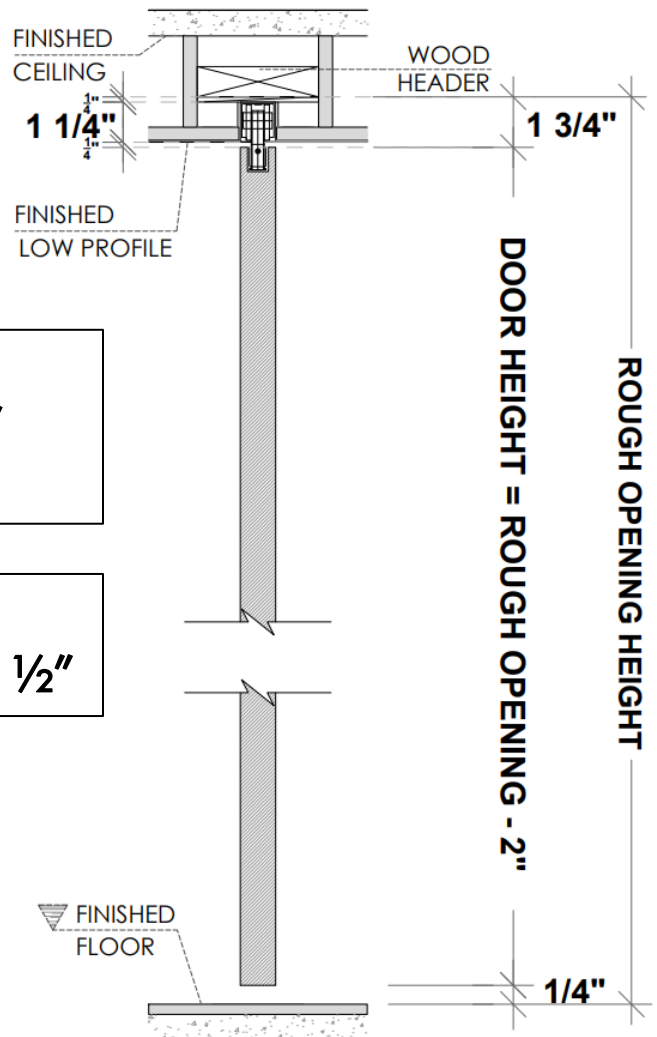
**RO = DH (Door Height) + 2"**

(from Finished Floor)



PLEASE ACCOUNT FOR FINISHED FLOOR FOR ALL MEASUREMENTS GIVEN TO DAYORIS

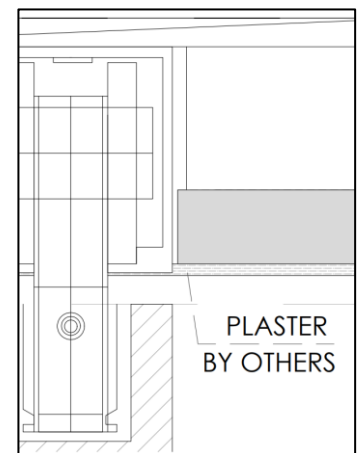
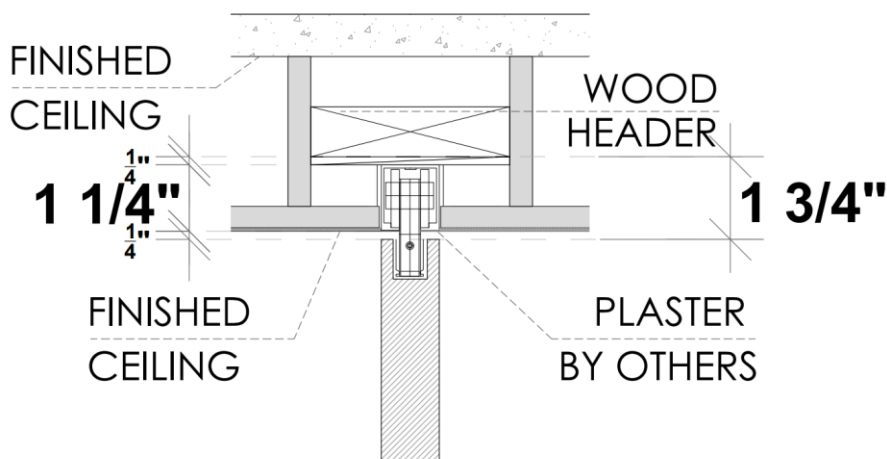
## 2.b Floor to Ceiling Application with 2x6 and 1 5/8" Studs



**HAFELE Track**  
 $RO = DH \text{ (Door Height)} + 2"$   
 (from Finished Floor)

$DH \text{ (Door Height)} =$   
 Finished Floor to Finished Ceiling - 1/2"

**Support at 1 1/2" above finished ceiling**



PLEASE ACCOUNT FOR FINISHED FLOOR FOR ALL MEASUREMENTS GIVEN TO DAYORIS



# Filo muro/ pocket door

## 1. Pocket Frame with 2x6 and 1 5/8" Studs Structure (by others)



# Filo muro/ pocket door

## 2. Hafele Track Installation (included)

- with Soft close and/or Soft open mechanism.  
(Door must be at least 34" width)

## 3. Bottom Guide (included)

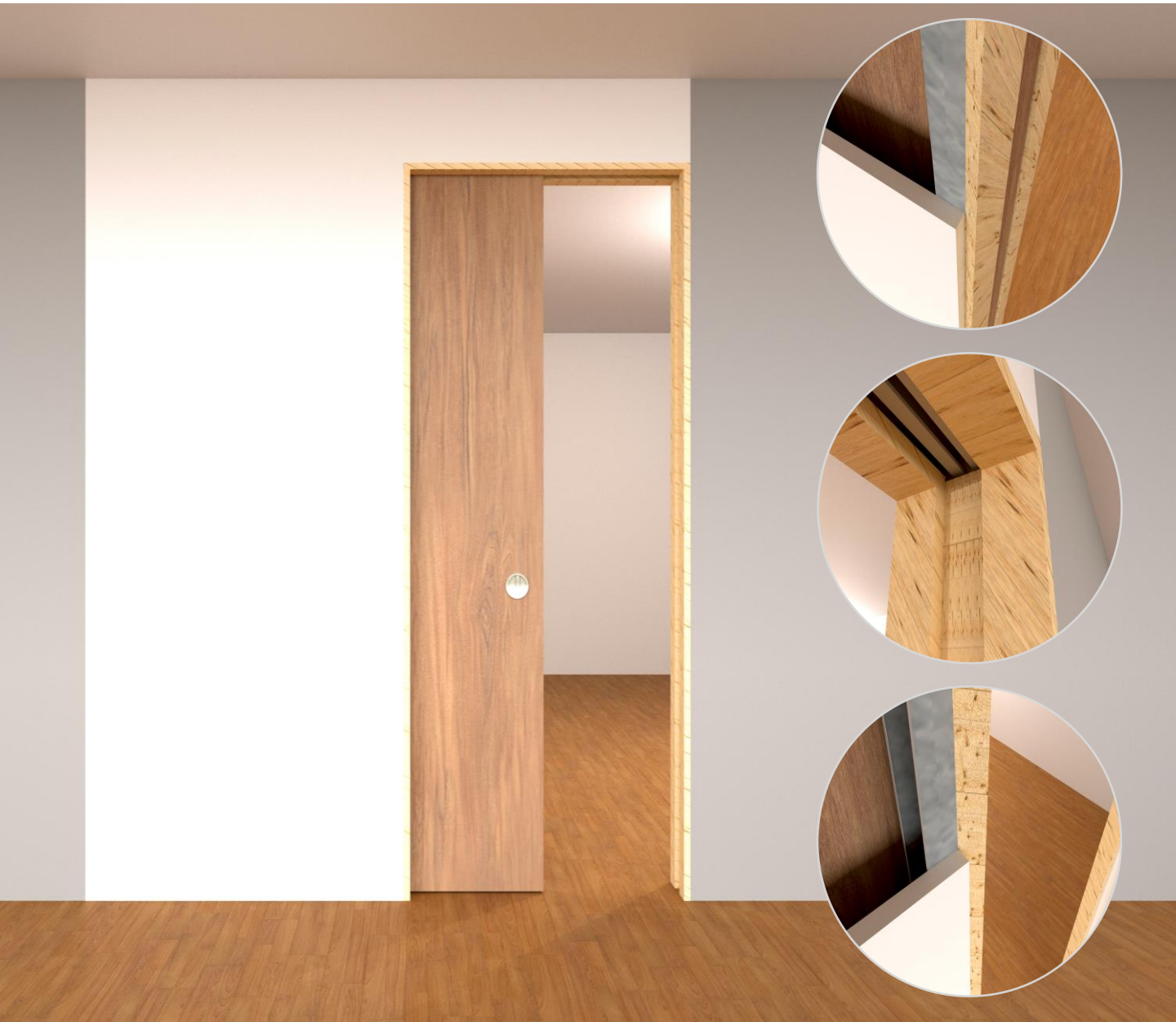
## 4. Door Slab (included)





## Filo muro/ pocket door

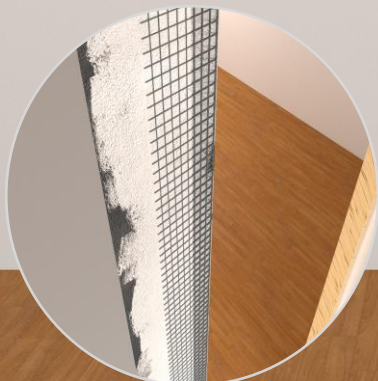
4. 4" Receiver to prime and paint (included)
5. 45° Poplar Trim to cut to size, prime and paint (included)



# Filo muro/ pocket door

## 6. Plaster Application (by others)

\* Linear Difuser Profile  
\* Floor to Ceiling Application



\* Standard Application



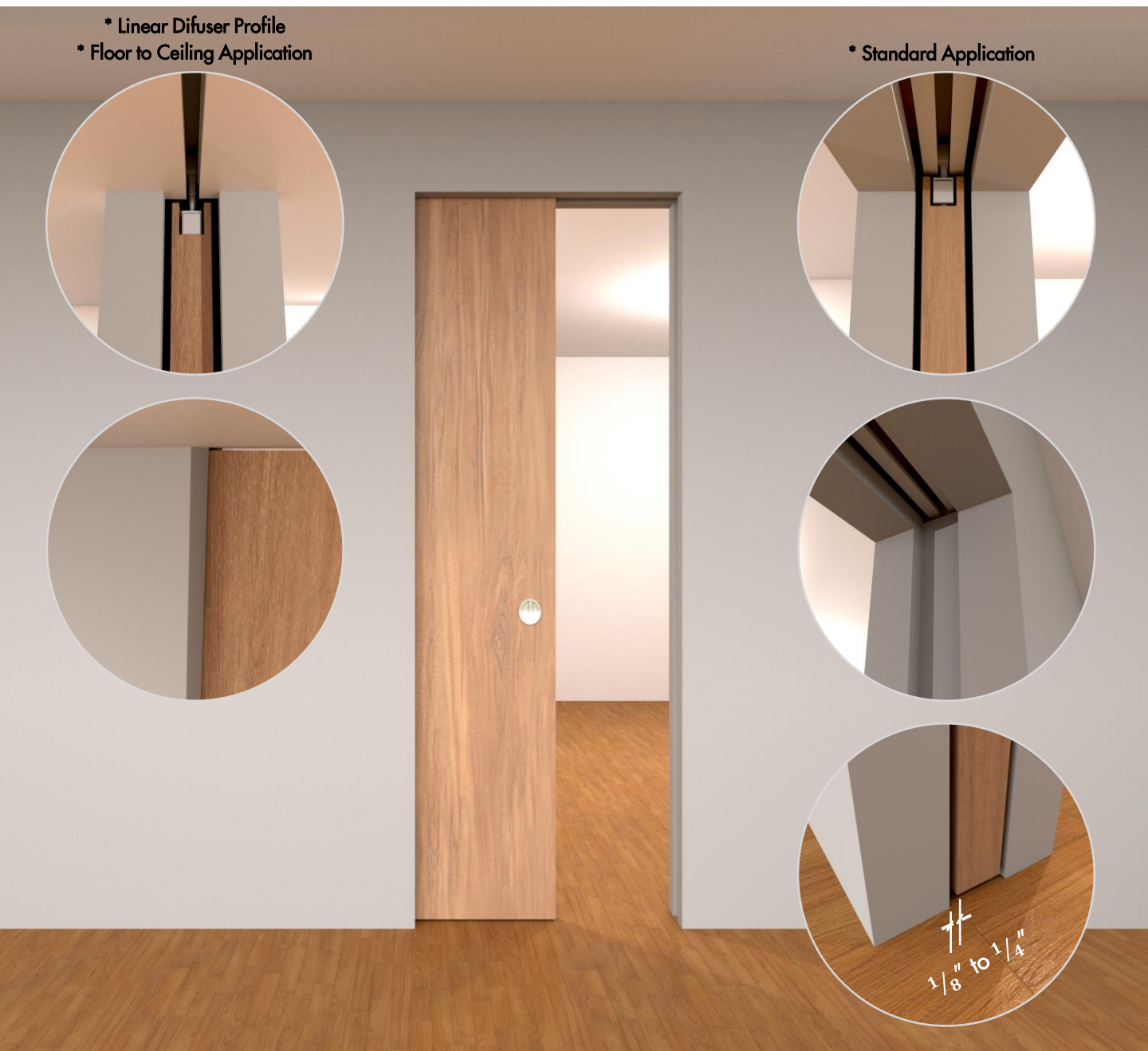
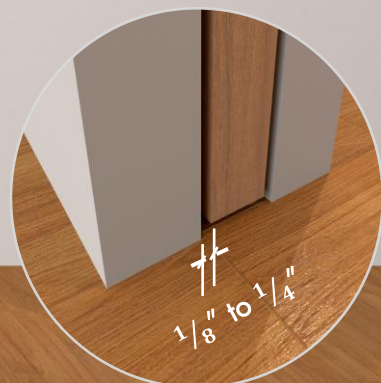
# Filo muro/ pocket door

## 7. Finished Pocket Installation

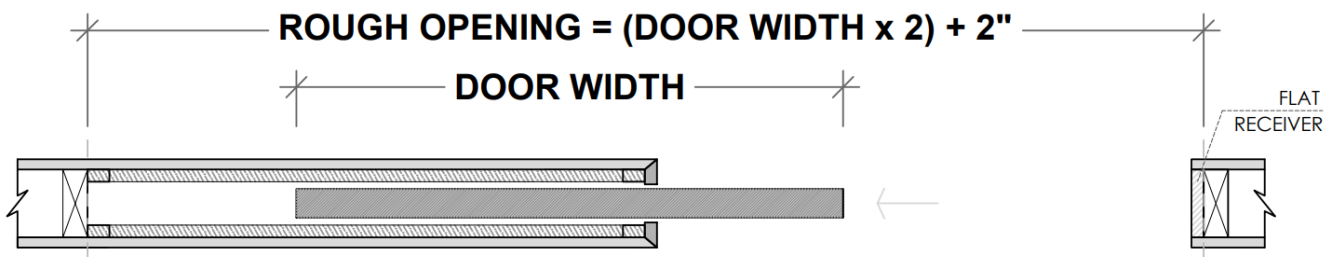
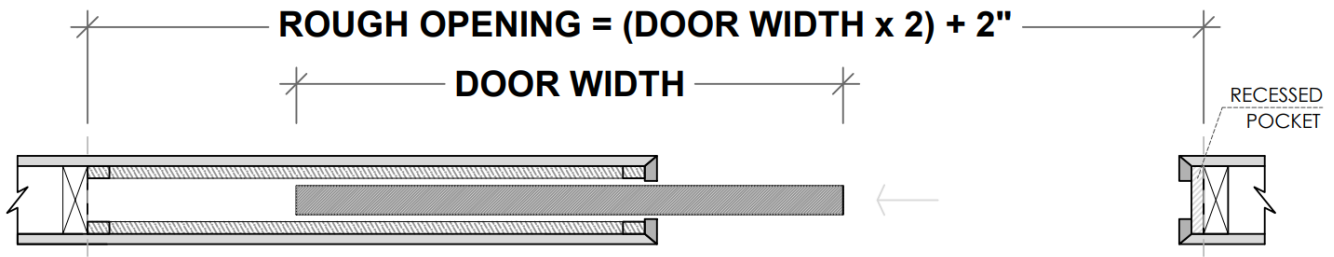
\* Linear Difuser Profile  
\* Floor to Ceiling Application



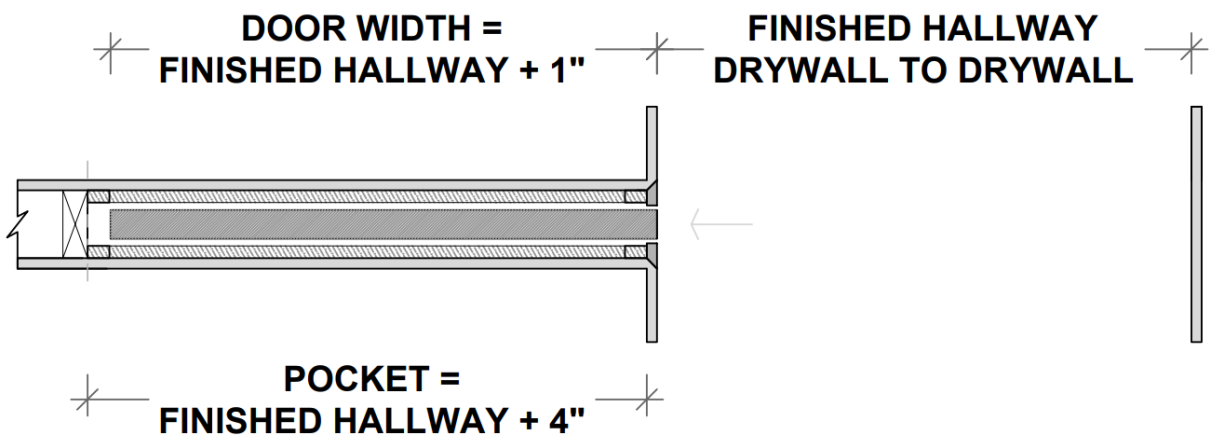
\* Standard Application



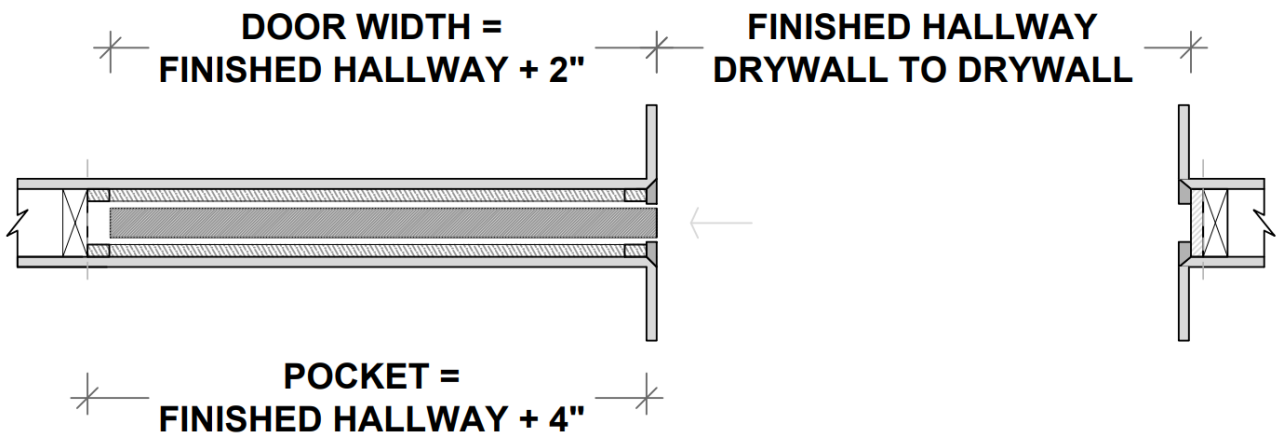
# Pocket Door Situations



## Hallway Detail 1



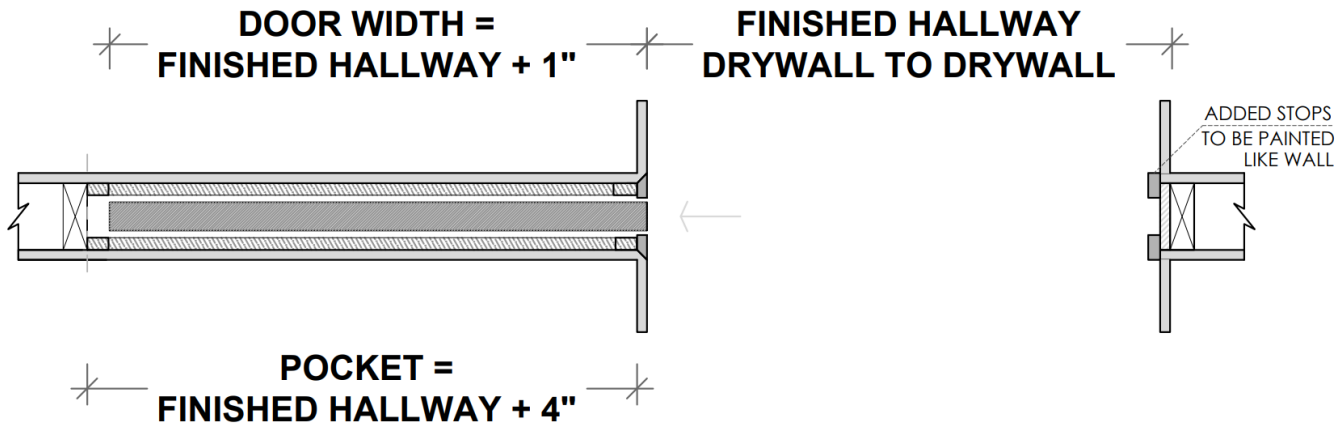
## Hallway Detail 2



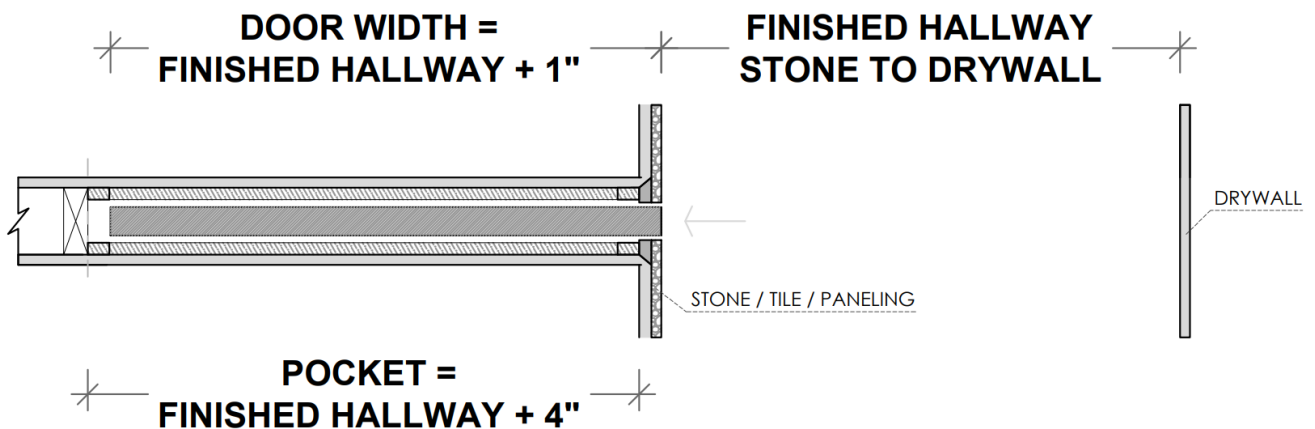


# Pocket Door Situations

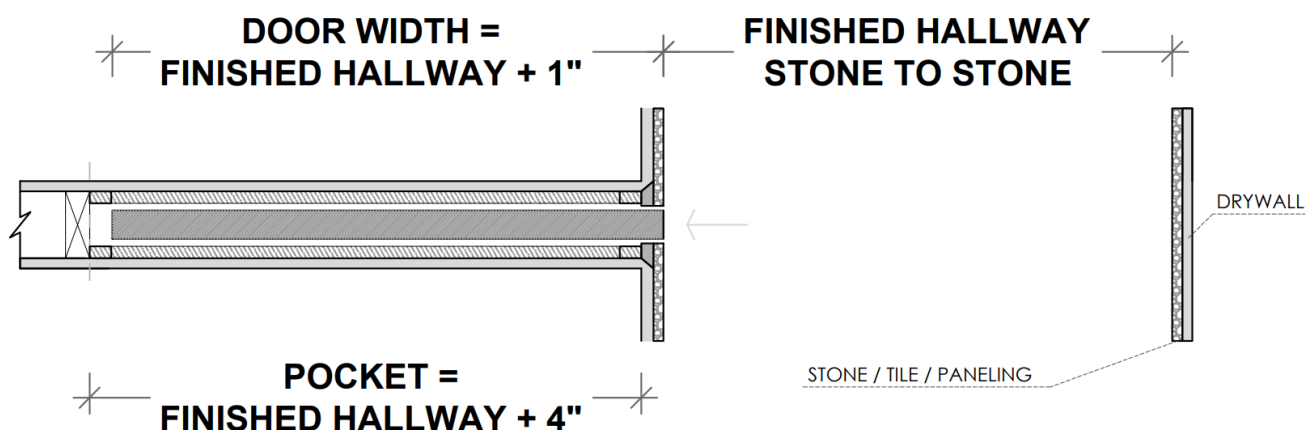
## Hallway Detail 3



## Hallway Detail 4 (with stone at one side)



## Hallway Detail 5 (with stone on both sides)

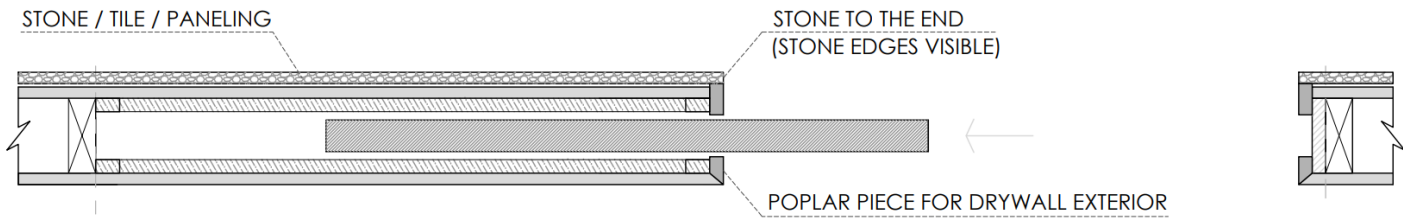




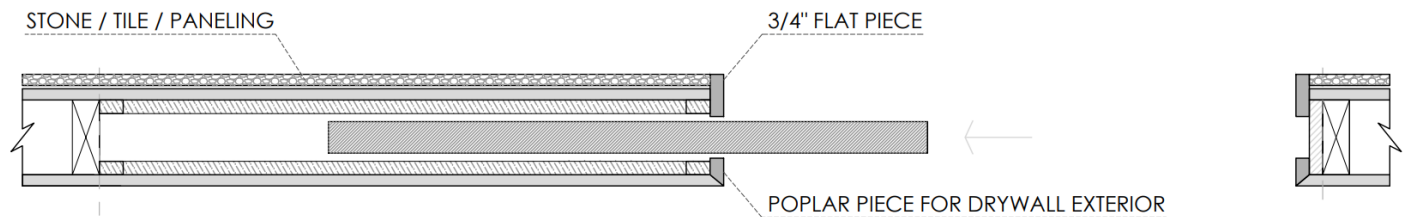
# Pocket Door Situations

## Pocket Doors in Conjunction with Stone / Tile / Paneling

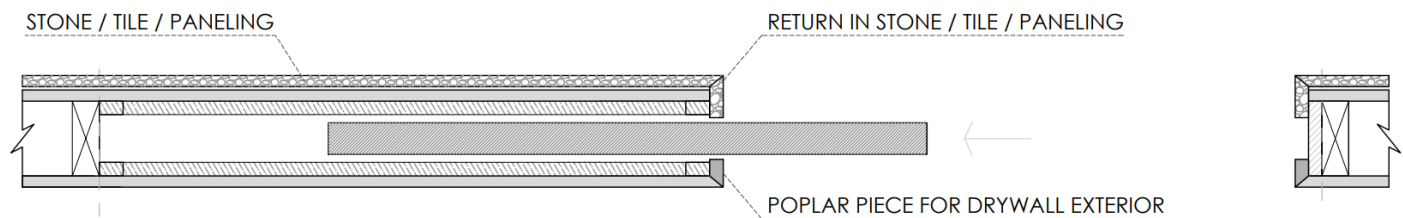
### Option A



### Option B



### Option C



## Hardware

### Pocket and Sliding Door Hardware

#### Satin



#### Polished



#### Black

