

Filo/ with casing

POCKET DOOR



Types of Applications



Finishes

Primed / Laminated Import

Laminated Suncrest / Matte Lacquer

Wood veneer

Applications

Standard Application



Floor to Ceiling Application *



What's included

Technical Specifications:

Solid Core Door Slab

Finish – Designer's choice

Handset – DAYORIS Italia

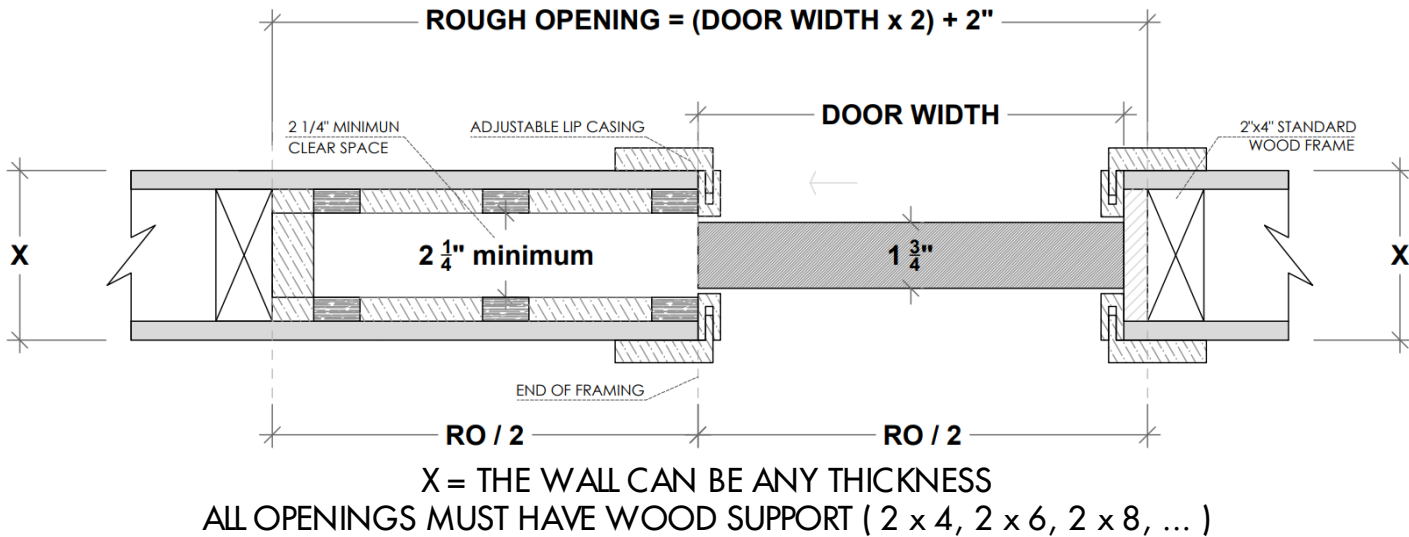
Design – Designers Choice

* Optional Upgrade

1. Builders grade Pocket Frame Structure Kit

Limited to Door size up to 3' x 8'

Usually provided by others, available from Dayoris as an optional upgrade. (for optimal use, Dayoris recommend option 2, framing with 2x6).

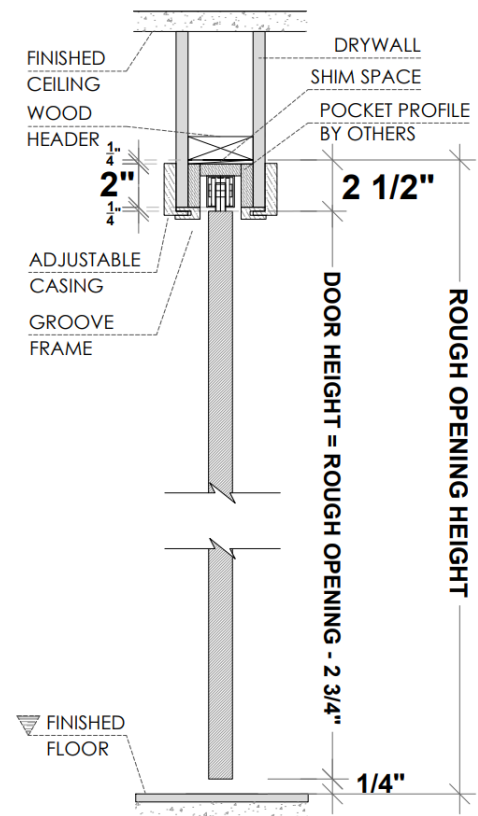


1.a Standard Application with Builders Pocket Frame

HAFELE Track

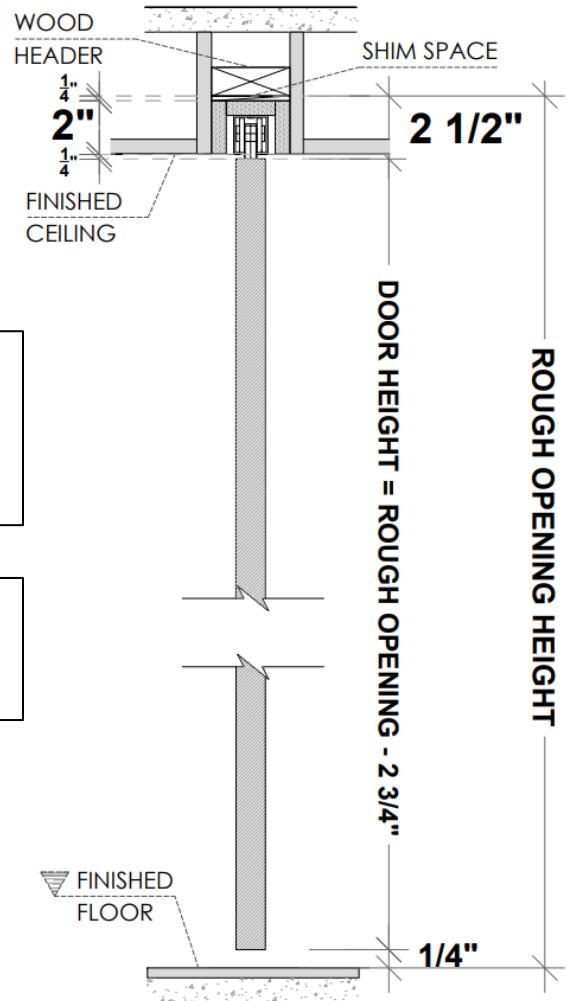
RO = DH (Door Height) + 2 3/4"

(from Finished Floor)



PLEASE ACCOUNT FOR FINISHED FLOOR FOR ALL MEASUREMENTS GIVEN TO DAYORIS

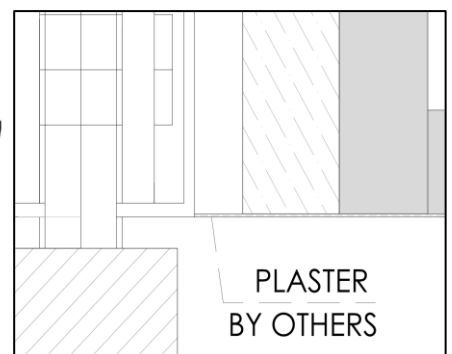
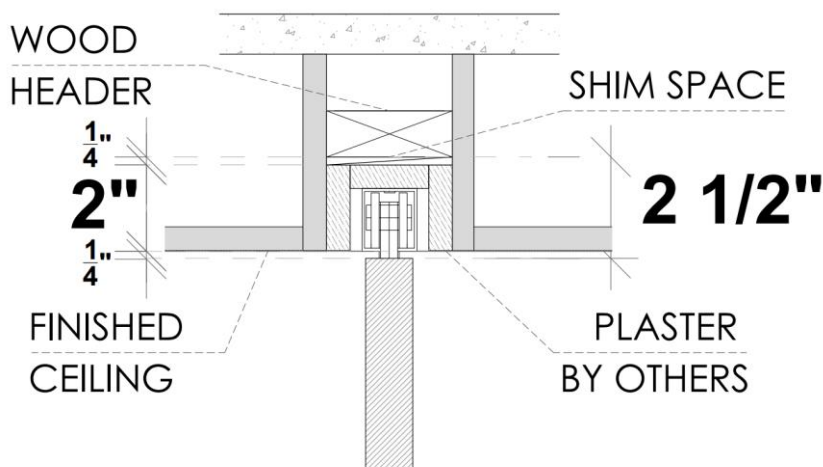
1.b Floor to Ceiling Application with Builders Pocket Frame Kit



HAFELE Track
 $RO = DH \text{ (Door Height)} + 2 \frac{3}{4}"$
 (from Finished Floor)

$DH \text{ (Door Height)} =$
 Finished Floor to Finished Ceiling - $\frac{1}{2}"$

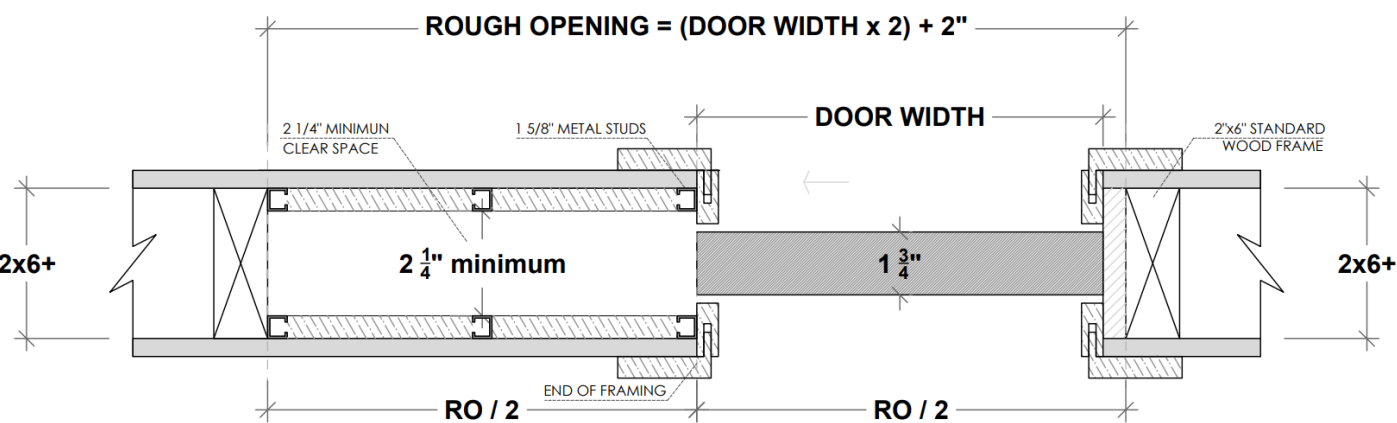
Support at $2 \frac{1}{4}"$ above finished ceiling



PLEASE ACCOUNT FOR FINISHED FLOOR FOR ALL MEASUREMENTS GIVEN TO DAYORIS

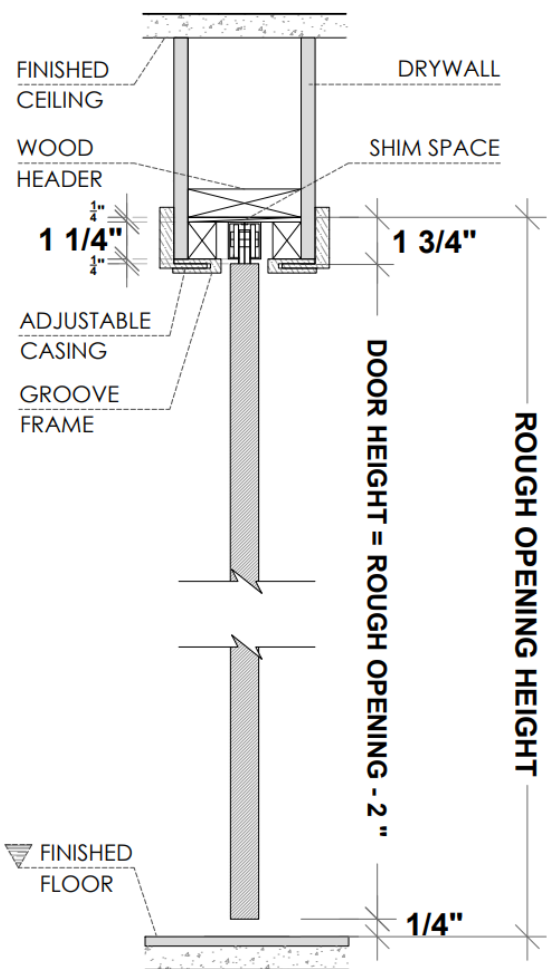
2. Pocket Frame with 2x6 and 1 5/8" Studs Structure (by others)

Recommended Application



ALL OPENINGS MUST HAVE WOOD SUPPORT (2x6)

2.a Standard Application with 2x6 Frame and 1 5/8" Studs



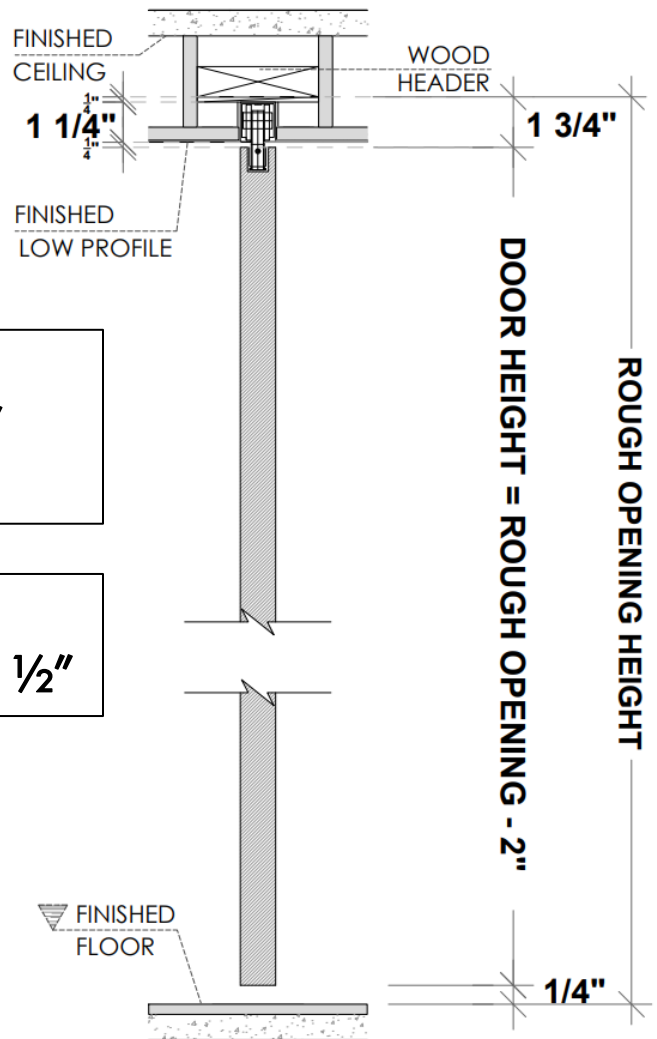
HAFELE Track

RO = DH (Door Height) + 2"

(from Finished Floor)

PLEASE ACCOUNT FOR FINISHED FLOOR FOR ALL MEASUREMENTS GIVEN TO DAYORIS

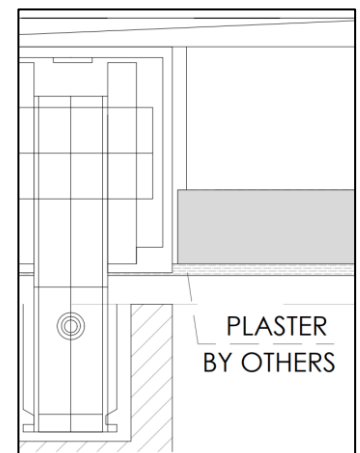
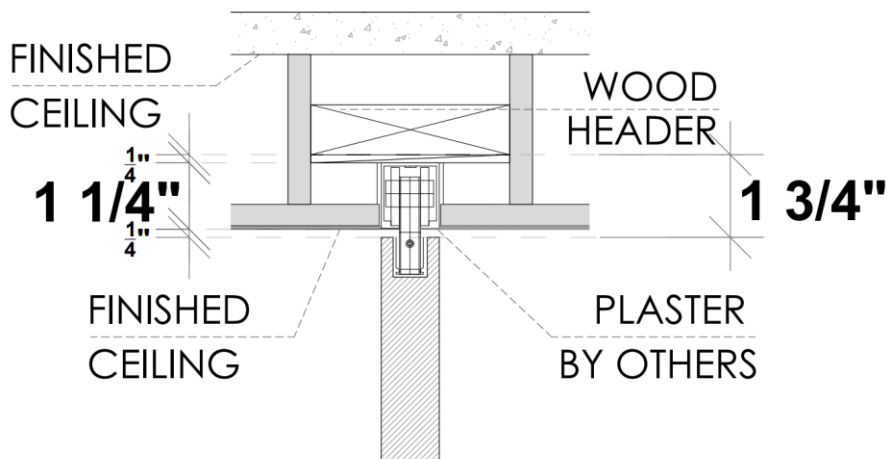
2.b Floor to Ceiling Application with 2x6 and 1 5/8" Studs



HAFELE Track
 $RO = DH \text{ (Door Height)} + 2"$
 (from Finished Floor)

$DH \text{ (Door Height)} =$
 Finished Floor to Finished Ceiling - 1/2"

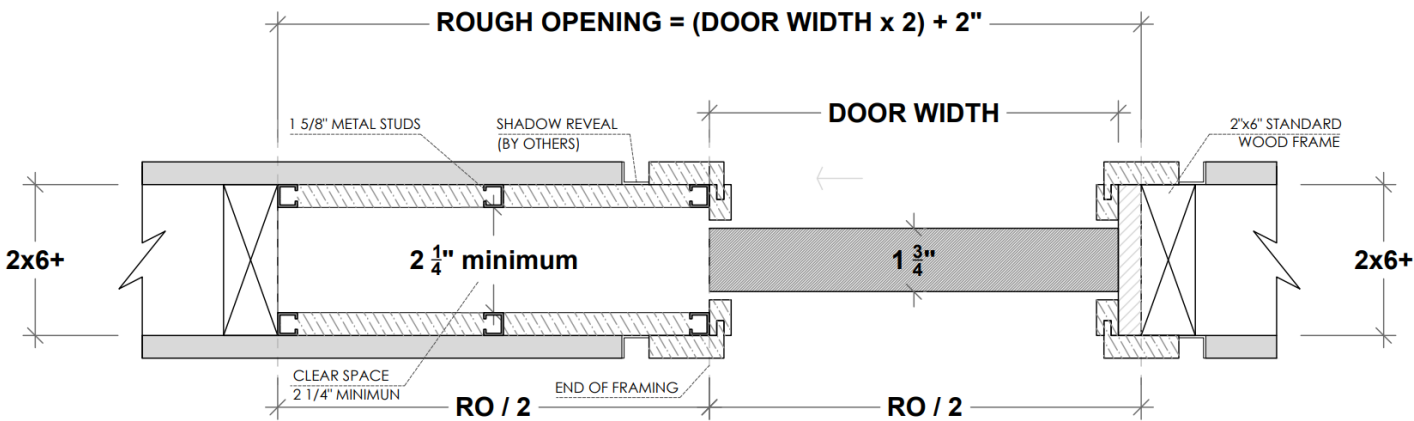
Support at 1 1/2" above finished ceiling



PLEASE ACCOUNT FOR FINISHED FLOOR FOR ALL MEASUREMENTS GIVEN TO DAYORIS

3. Pocket Frame with 2x6 and 1 5/8" Studs Structure with Shadow Reveal (by others)

Recommended Application



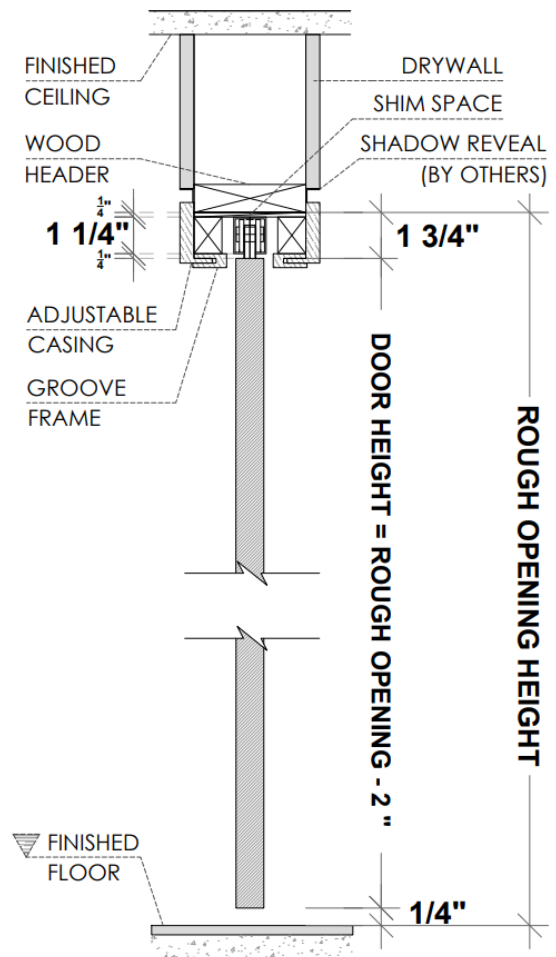
ALL OPENINGS MUST HAVE WOOD SUPPORT (2x6)

2.a Standard Application with 2x6 Frame and 1 5/8" Studs

HAFELE Track

RO = DH (Door Height) + 2"

(from Finished Floor)



PLEASE ACCOUNT FOR FINISHED FLOOR FOR ALL MEASUREMENTS GIVEN TO DAYORIS

Hardware

Pocket and Sliding Door Hardware

Satin



Polished



Black

